



Your Graduate Experience

2011-2012

 UNIVERSITY OF
DENVER
START FROM A HIGHER PLACE

welcome letter

Welcome to the University of Denver! You have joined an exceptional, vibrant learning community. Graduate students comprise more than half of the student population at DU, reflecting the university's commitment to graduate education. We thank you for choosing DU and entrusting your professional development to the fine faculty here. Whatever your future may hold, we hope you find the support and encouragement you need to make your dreams reality.

This handbook serves as a resource to help you navigate your graduate career. Please also take time to review the [Graduate Policies and Procedures manual](#). Your individual graduate program may provide you its own handbook as well. Specific [degree requirements](#) can be found in the PDF bulletins available online.

As a graduate student at DU, you may expect rigorous study, collaboration, and applied learning experiences that are intended to benefit you and the world. Our faculty are readily accessible and passionate about their work. May your days at DU educate you for the 21st century and prepare you to achieve your highest goals.

Best regards,

Barbara J. Wilcots, Ph.D.
Associate Provost
Graduate Studies

in this handbook

academic calendar:

University of Denver, General
Sturm College of Law
University College

**financial aid,
tuition & billing:**

Graduate Financial Aid Award Information
Graduate Cost Worksheet
Bursar's Office

residence/housing:

DU Apartments
Off Campus Housing

**campus safety
& parking services:**

Campus Safety
Parking Services

health services:

Health & Counseling Center
DU Student Health Insurance Plan
Health Insurance Waiver Instructions

technology services:

University Technology Services

graduate student life:

Pioneer ID Card
DU Recreation
Disability Services Program
Gender Violence Education & Support Services
DU Bookstore & Heckman Pioneer Shop
Graduate Student Association Council

denver resource guide:

Denver Business Listings

academic year calendar 2011-2012

University Holidays

September

S	M	T	W	T	F	S
				1	2	3
4	5	6	7	8	9	10
11	12	13	14	15	16	17
18	19	20	21	22	23	24
25	26	27	28	29	30	

October

S	M	T	W	T	F	S
					1	2
3	4	5	6	7	8	9
10	11	12	13	14	15	16
17	18	19	20	21	22	23
24	25	26	27	28	29	30
31						

November

S	M	T	W	T	F	S
			1	2	3	4
5	6	7	8	9	10	11
12	13	14	15	16	17	18
19	20	21	22	23	24	25
26	27	28	29	30		

December

S	M	T	W	T	F	S
				1	2	3
4	5	6	7	8	9	10
11	12	13	14	15	16	17
18	19	20	21	22	23	24
25	26	27	28	29	30	31

January

S	M	T	W	T	F	S
1	2	3	4	5	6	7
8	9	10	11	12	13	14
15	16	17	18	19	20	21
22	23	24	25	26	27	28
29	30	31				

February

S	M	T	W	T	F	S
			1	2	3	4
5	6	7	8	9	10	11
12	13	14	15	16	17	18
19	20	21	22	23	24	25
26	27	28	29			

March

S	M	T	W	T	F	S
				1	2	3
4	5	6	7	8	9	10
11	12	13	14	15	16	17
18	19	20	21	22	23	24
25	26	27	28	29	30	31

April

S	M	T	W	T	F	S
1	2	3	4	5	6	7
8	9	10	11	12	13	14
15	16	17	18	19	20	21
22	23	24	25	26	27	28
29	30					

May

S	M	T	W	T	F	S
			1	2	3	4
5	6	7	8	9	10	11
12	13	14	15	16	17	18
19	20	21	22	23	24	25
26	27	28	29	30	31	

June

S	M	T	W	T	F	S
					1	2
3	4	5	6	7	8	9
10	11	12	13	14	15	16
17	18	19	20	21	22	23
24	25	26	27	28	29	30

July

S	M	T	W	T	F	S
1	2	3	4	5	6	7
8	9	10	11	12	13	14
15	16	17	18	19	20	21
22	23	24	25	26	27	28
29	30	31				

August

S	M	T	W	T	F	S
			1	2	3	4
5	6	7	8	9	10	11
12	13	14	15	16	17	18
19	20	21	22	23	24	25
26	27	28	29	30	31	

Sept. 5, 2011

Labor Day

Nov. 24-25, 2011

Thanksgiving

Dec. 26-30, 2011

Winter holiday

Jan. 16, 2012

Martin Luther King, Jr. Day

May 28, 2012

Memorial Day

July 4, 2012

Independence Day

academic year calendar 2011-2012

University of Denver, General

AUTUMN QUARTER 2011 (50 class days + 4 Day Examination Period)

September 5 – 9	Monday – Friday	New Student Orientation and Registration
September 12	Monday	Classes begin; Late Registration fee begins
September 16	Friday	Last day to register without approval
October 21	Friday	Last day for Automatic W (6th week)
November 18	Friday	Last Day of Classes
November 19 – 22	Saturday – Tuesday	Final examination period

WINTER INTERTERM 2011

November 23 – December 23		
November 24–25	Thursday–Friday	Thanksgiving
December 26–30	Monday–Friday	Winter Holiday

WINTER QUARTER 2012 (49 class days + 4 day examination period)

January 2	Monday	New Student Orientation and Registration
January 3	Tuesday	Classes begin; Late Registration fee begins
January 9	Monday	Last day to register without approval
January 16	Monday	Martin Luther King, Jr. Holiday
February 13	Monday	Last day for Automatic W (6th week)
March 12	Monday	Last day of classes
March 13–16	Tuesday–Friday	Final examination period

SPRING INTERTERM (Break) 2012

March 17–March 25

SPRING QUARTER 2012 (49 class days + 4 Day Examination Period)

March 23	Friday	New Student Orientation and Registration
March 26	Monday	Classes begin; late registration fee begins
March 30	Friday	Last day to register without approval
May 4	Friday	Last day for Automatic W (6th week)
May 28	Monday	Memorial Day
June 1	Friday	Last day of classes
June 4–7	Monday–Thursday	Final examination period
June 8	Friday	Graduate Commencement
June 9	Saturday	Undergraduate Commencement

SUMMER INTERTERM 2012

June 10–June 17

SUMMER SESSION 2012 (43 class days)

June 15	Friday	New Student Orientation and Registration
June 18	Monday	Classes begin
June 22	Friday	Last day to register without approval (9 week courses)
July 4	Wednesday	Independence Day
July 27	Friday	Last day for automatic W (9 week courses).
August 16	Thursday	Last day of classes
August 17	Friday	Commencement

AUTUMN INTERTERM 2012

August 17–September 1

academic year calendar 2011-2012

Sturm College of Law

FALL SEMESTER 2011

Monday-Friday	August 8-12	Orientation for First Year and JD transfer students
Monday	August 15	Fall semester begins
Monday	August 29	Last day to drop classes for 100% refund
Monday	September 5	Labor Day (no day or evening classes)
Wednesday	September 28	Rosh Hashanah begins at sundown
Friday	October 7	Yom Kippur begins at sundown
Monday-Friday	November 7-18	Spring 2012 priority registration
Monday	November 21	Last day of fall semester
Wednesday-Wednesday	November 22-30	Reading days
Thursday-Friday	November 24-25	Thanksgiving holiday observed
Thursday-Thursday	December 1-15	Final examination period

SPRING SEMESTER 2012

Wednesday	January 11	Spring semester begins
Monday	January 16	Martin Luther King, Jr. Day (no day or evening classes)
Wednesday	January 25	Last day to drop classes for 100% refund
Monday-Friday	March 12-17	Spring Break
Monday-Saturday	March 26-31	Summer 2012 priority registration
Monday-Friday	April 2-13	Fall 2012 priority registration
Tuesday	April 24	Last day of spring semester
Wednesday	April 25	Make-up classes for January 16 th
Thursday-Wednesday	April 26-May 2	Reading days
Thursday-Thursday	May 3-17	Final examination period
Saturday	May 19	Spring commencement ceremony

SUMMER SEMESTER 2012

Tuesday	May 29	Summer semester begins
Tuesday	June 5	Last day to drop classes for 100% refund
Monday	July 4	Independence Day (no day or evening classes)
Monday	July 16	Last day of summer semester
Tuesday	July 17	Make-up day for July 4 th classes
Wednesday-Friday	July 18-20	Reading days
Monday-Saturday	July 23-28	Final examination period

academic year calendar 2011-2012

University College

FALL QUARTER 2011

August 1-5	Monday-Friday	Priority registration
August 8	Monday	Open registration begins (all students)
September 2	Friday	Last day to register
September 7	Wednesday	Writing Workshop on campus
September 10	Saturday	New Student Orientation
September 12	Monday	Classes begin
October 21	Friday	Last day to withdraw
November 18	Friday	Classes end

WINTER QUARTER 2012 (main campus starts 1 week earlier)

November 7-11	Monday-Friday	Priority registration
November 14	Monday	Open registration begins (all students)
December 22	Thursday	Last day to register
January 4	Wednesday	Writing Workshop on campus
January 7	Saturday	New Student Orientation
January 9	Monday	Classes begin (1 week later than main campus)
January 16	Monday	Martin Luther King, Jr. Holiday
February 17	Friday	Last day to withdraw
March 16	Friday	Classes end

SPRING QUARTER 2012

February 13-17	Monday-Friday	Priority registration
February 20	Monday	Open registration begins (all students)
March 16	Friday	Last day to register
March 17	Saturday	New Student Orientation
March 21	Wednesday	Writing Workshop on campus
March 26	Monday	Classes begin
May 4	Friday	Last day to withdraw
May 28	Monday	Memorial Day
June 1	Friday	Classes end
June 8	Friday	Graduate commencement
June 9	Saturday	Undergraduate commencement

SUMMER QUARTER 2012 (main campus starts 1 week later)

April 30-May 4	Monday-Friday	Priority Registration
May 7	Monday	Open registration begins (all students)
June 1	Friday	Last day to register
June 6	Wednesday	Writing Workshop on campus
June 7	Thursday	New Student Orientation
June 11	Monday	Classes begin (1 week earlier than main campus)
July 4	Wednesday	Independence Day Holiday
July 20	Friday	Last day to withdraw
August 16	Thursday	Classes end
August 17	Friday	Summer commencement

financial aid, tuition & billing

contact information:

OFFICE OF FINANCIAL AID

University Hall, Room 255
2197 S. University Blvd., Denver, CO 80208

phone: 303.871.4020
fax: 303.871.2341

e-mail: finaid@du.edu
website: www.du.edu/finaid

hours: M-F: 8:00 a.m. – 4:30 p.m.

BURSAR'S OFFICE

University Hall, Room 223
2197 S. University Blvd., Denver, CO 80208

phone: 303.871.4944
fax: 303.871.4401

e-mail: bursar@du.edu
website: www.du.edu/bursar

hours: M-F, 8:00 a.m. – 4:30 p.m.
cashier's office hours: M-F, 8:15 a.m. – 4:15 p.m.

financial aid, tuition & billing

Graduate Financial Aid Award Information

The value of a University of Denver education is something each student should carefully consider. A DU education is prized for its outcomes, commitment to investing in student learning and for our emphasis on excellence, innovation, integrity and engagement. DU is committed to financially assisting students to the greatest extent possible while assuring a quality educational experience. DU is continually making every effort to provide the best financial options for the greatest number of students.

The Office of Financial Aid and your academic department are committed to working with you to make a DU education affordable. Academic departments provide scholarships, grants and assistantships. The Office of Financial Aid provides Work-Study and student loans. After you review your financial aid award and read this document, accept your financial aid through the Student tab of webCentral. Contact the Office of Financial Aid if you have any questions.

COST OF ATTENDANCE

The cost of attendance, or student budget, is a nine-month estimate of direct and indirect costs typically incurred by all students. Direct costs are billed to you by the Bursar's Office. These include tuition, fees and the optional student health insurance plan. Indirect costs are educational expenses that are not billed by the University. These include books and supplies, room, board, transportation expenses and personal expenses. The budget parameters have been determined by the Colorado Department of Higher Education and by the Office of Financial Aid.

The student budget sets a limit on the amount of financial assistance that can be received in an academic year, which may include scholarships, grants, Work-Study funding, loans and other resources (such as AmeriCorps awards and employer paid tuition benefits). The budget in your award letter lists the costs used to determine your financial aid award. Your actual costs may be different.

STUDENT BILL

Each term you will be billed for direct costs less any financial aid you receive. You are responsible for making arrangements to pay any outstanding charges by the published due date. Payment for each term is due 10 days prior to the official start of the term. Tuition due dates for the 2011-2012 academic year are listed on the Bursar's Office website at www.du.edu/bursar.

If your financial aid disbursement exceeds your charges, you will receive a refund for the excess amount. Direct deposit of refunds may be set up through your webCentral account, on the Student tab.

YOUR FINANCIAL AID AWARD

Your financial aid award is based on the Free Application for Federal Student Aid (FAFSA), the cost of attendance, your demonstrated financial need, the date you submitted your FAFSA and the availability of financial assistance at DU.

Based on the information you submitted, your award reflects the maximum award that our resources will allow. However, if you have special circumstances not reflected on the FAFSA, please contact our office to discuss submitting an appeal. An advisor will be able to let you know if a change to your award could result from an appeal and will notify you if additional documentation is required.

financial aid, tuition & billing

Your financial aid awards are divided equally between fall, winter and spring quarters, or if you are a law student, fall and spring semesters. The financial aid offered can only be used during the terms indicated. If your enrollment plan will be less than the traditional nine-month academic year, inform the Office of Financial Aid so adjustments can be made to your cost of attendance and financial aid awards.

Financial aid is available for summer term, but on a very limited basis. Summer is considered the fourth quarter or third semester of the academic year, therefore awarding of federal aid will be limited to your remaining eligibility from the current academic year. You should carefully examine your academic plans and finances before registering for summer. If you are interested in obtaining financial aid for the summer, you will need to complete an online Summer Aid Application through webCentral. This application is available April 1, 2012.

ACCEPTING YOUR AWARD

You can view your financial aid awards and accept, decline or reduce offered aid through the Student or Admitted Graduate Student tabs in webCentral at www.webcentral.du.edu. Your acceptance indicates that you will comply with all of the terms and conditions of financial aid awards. Scholarships, grants, Work-Study and student loans must be accepted through webCentral within 30 days of your award notification to ensure you receive these funds for the academic year. Some institutional scholarships may have been automatically accepted for you. Awards not accepted by the deadline may be cancelled.

STATEMENT OF EDUCATIONAL PURPOSE

By accepting financial aid awards, you certify that all money received under Title IV and Colorado State student financial aid programs are only for expenses related to your attendance at University of Denver. You also confirm that you do not owe a repayment on any federal or state student aid funds received at any institution attended, nor have you borrowed in excess of any federal loan limits. You further attest that you are responsible for repayment of a prorated amount of any portion of payments made which cannot reasonably be attributed to meeting educational expenses related to the attendance at the University. The amount of such repayment is to be determined by the criteria set forth by the United States Department of Education and the Colorado Department of Higher Education.

TITLE IV DISCLOSURE

Through the Higher Education Act of 1965, the Federal government requires the University of Denver to provide the following information: The title of the person designated under Section 668.367, Subpart C, Title 34 of the Code of Federal Regulations is the Director of Financial Aid. This individual may be contacted at the Office of Financial Aid, University Hall, 2197 South University Boulevard, University of Denver, Denver, Colorado 80208, 303.871.4020, Monday through Friday, 8:00 a.m. to 4:30 p.m.

University of Denver must provide you with a statement of the rights and responsibilities of students receiving financial aid under the Perkins loan and Direct Loan programs.

financial aid, tuition & billing

To receive Federal Title IV financial aid funds:

1. You must maintain satisfactory academic progress according to University of Denver standards and practices as published.
2. You must not be in default on a Federal Perkins and/or Federal Loan Programs, or Federal PLUS Loan Programs at any institution.
3. You must not owe a refund of a federal grant received at any institution.
4. You must sign a statement that all funds received through the federal financial aid programs will be used solely for educational or education-related purposes.
5. You must be registered for the draft if you are required to register. Proof of registration may be required.

Other information that University of Denver is required to disseminate, according to the Student Consumerism Regulations, Section 668.34, Subpart C, Title 34 of the Code of Federal Regulations, Part 178.4, can be found elsewhere in this document and the DU financial aid website.

RIGHTS AND RESPONSIBILITIES

Your rights and responsibilities for receiving financial aid are contingent upon your compliance with various federal, state and institutional policies and regulations that govern the awards. The policies described below apply to your financial aid awards.

- The Office of Financial Aid expects you to read and understand the contents of this document.
- You will maintain a record of your application and award information and keep copies of all your financial aid documents in a personal file.
- You are responsible for completing the FAFSA, submitting documents for verification, applying for loans, signing promissory notes, and completing entrance and exit counseling in a timely manner. Financial aid disbursement may be delayed if requirements are not complete at least one month prior to the start of classes.
- Your financial aid award is not renewed automatically. You must reapply by April 1 each year for full consideration of financial assistance for the following year. Need-based financial aid awards may change from year to year based on your family's financial circumstances such as changes in income and/or assets, the number of people included in your family size, the number of students in your family attending college and your year in school.
- If you are selected for verification, you will receive an email from the Office of Financial Aid listing the documents that must be submitted. These documents must be received before a financial aid award can be generated or financial aid disbursed to your student account.
- If you receive additional aid from outside sources including private scholarships, Americorps awards or company reimbursement, your financial aid awards may be adjusted to prevent awards that exceed your financial need or cost of attendance.

financial aid, tuition & billing

- DU scholarships, grants, and GTA/GRA tuition waivers cover tuition charges only, unless otherwise stipulated by the award.
- DU employees and/or eligible children may not receive a combination of tuition waiver benefits and institutional awards that exceed tuition.
- If you drop below 4 credit hours, you will no longer be eligible for federal aid. If you obtain your degree, withdraw from school, or change from degree candidate to non-degree candidate during the school year your financial aid award will be adjusted according to the terms you attend.
- If you drop below full-time enrollment, you may lose eligibility for certain grant or scholarship awards; or they may be prorated. Your budget may also be reduced, which would reduce your eligibility for financial aid.
- If you defer admission from fall to winter or spring quarters in the same academic year, you must notify the Office of Financial Aid.
- If you owe charges to DU for a previous term, a hold will be placed on your account preventing you from registering for future quarters. The hold will be lifted after you pay your account balance in full.
- Federal regulations require the DU Office of Financial Aid to monitor the academic progress of all students receiving financial aid. This policy is called Satisfactory Academic Progress (SAP). The SAP policy is enforced in conjunction with all other University policies and procedures, including the academic suspension policy. SAP is monitored on a yearly basis, usually in mid to late summer, and is effective the following fall term. SAP is measured using three factors:
 1. You must complete 66.67% of courses attempted.
 2. You must maintain a minimum cumulative GPA as defined by your program of study (3.0 for most graduate programs at DU, 2.20 for Law students, 77 for Graduate Tax students).
 3. You must complete degree requirements within 150% of the time frame required to complete your degree. If you are not meeting SAP standards, you will be notified by the Office of Financial Aid and must confer with a Financial Aid Advisor to create a plan to regain eligibility.
- If you have been awarded federal Work-Study, you must secure a Work-Study position within the first six weeks of the term to remain eligible for the award offered to you. If you do not secure a position within the first six weeks, the award will be cancelled. Work-Study policies are outlined in the Work-Study Student Handbook. If for any reason you fail to fulfill the expectations of the Work-Study program, your employment will be terminated. You must be enrolled full-time (8 credits) in order to retain a Work-Study award. Work-Study monies cannot be earned by DU staff or faculty members.
- Any student who begins classes at DU, applies for financial aid, completes all of the requirements to obtain aid, and then withdraws from classes may have his or her financial aid adjusted according to federal, state and institutional regulations. Students must contact the Registrar's Office to officially withdraw from the University. The Office of Financial Aid can advise you on how a withdrawal affects your financial aid eligibility.

financial aid, tuition & billing

TYPES OF FINANCIAL AID

Awarding of financial aid is directed by both your academic department and the Office of Financial Aid. Your financial aid award may contain a combination of the following types of aid.

DU Scholarships and Grants

The DU financial aid program includes a range of scholarships and grants that are funded by tuition revenue, endowment earnings and gifts. Your financial aid award reflects University of Denver's commitment from institutional resources. The combination of institutional awards may not exceed your tuition charges per term.

Scholarship awarding criteria is determined by academic departments. Contact your department for details.

Academic departments also recommend Doctoral Fellowship candidates to the Office of Graduate Studies. The Office of Graduate Studies selects candidates with outstanding academic achievement based on departmental recommendations. Contact your department for details.

Graduate Teaching or Research Assistantships

Assistantship awarding criteria is determined by academic departments. These awards traditionally include a tuition waiver and a monthly stipend in the form of a salary. Contact your department for details.

Federal Work-Study

The Work-Study program provides jobs for students with financial need, allowing them to earn money to help pay for educationally-related expenses. The program encourages community service work and work related to each student's course of study. Work-Study jobs are available both on and off-campus. If you work off-campus, your employer will be a private nonprofit organization or a public agency, and the work performed must be in the public interest. These jobs should be relevant to your course of study to the maximum extent possible. You must be enrolled full-time (8 credits) to be eligible for Work-Study. You will earn at least Colorado minimum wage, but the amount might be higher depending on the type of work you do and the skills required. Your total Work-Study award depends on when you apply, your level of need, and the funding level available at the time you apply. The amount you earn may not exceed your total Work-Study award. When assigning work hours, your supervisor will consider your class schedule and your academic progress. You will be paid an hourly wage on a bi-weekly basis for hours worked. Work-Study funds will not be directly deposited into your tuition account. Additional information about Work-Study can be found at www.du.edu/studentemployment.

Federal Direct Loans

Subsidized and unsubsidized Federal Direct loans are available to students enrolled at least half-time (4 credits) in a degree-seeking program. These low-interest loans are made directly by the Department of Education. Students with demonstrated need are eligible for a subsidized loan and the government will pay the interest while the student is in school and during a six-month grace period. Unsubsidized loans are awarded to those without remaining need and the interest accrues on the loan during school, the grace period and through repayment.

financial aid, tuition & billing

The interest rate is a fixed 6.8% for graduate students. There is a .5% loan origination fee deducted from the loan by the Department of Education. This loan fee includes an up-front .5% rebate, which is retained by making the first 12 monthly payments on time. Repayment begins 6 months after the student is no longer enrolled at least half-time. The standard repayment period is 10 years but can be as long as 30 years.

Graduate students are eligible for loan amounts up to \$20,500 per academic year in a combination of subsidized and unsubsidized loans; no more than \$8,500 can be subsidized each academic year. A student's overall aggregate loan borrowing may not exceed \$138,500, of which the subsidized portion may not be over \$65,500.

Before you receive a Direct loan disbursement, you must complete online entrance counseling and sign a Master Promissory Note (MPN). Entrance counseling will provide important information about your rights and responsibilities as a loan borrower. Both of these requirements can be satisfied online through the Direct Loan website at www.studentloans.gov.

Federal Perkins Loan

The Perkins loan is a federally guaranteed, low interest loan with a fixed rate of 5.0% for graduate students enrolled at least half-time (4 credits) in an eligible program. Students with demonstrated financial need who meet the Office of Financial Aid application deadlines are considered for the loan up to a maximum of \$4,000 per academic year. Interest does not accrue while you are enrolled half-time (4 credits), during the nine-month grace period and during periods of eligible deferment.

Before you receive a Perkins loan disbursement, you must complete entrance counseling and sign a MPN. Entrance counseling will provide important information about your rights and responsibilities as a loan borrower. You may complete entrance counseling online at www.mappingyourfuture.org. When you successfully complete online entrance counseling, DU will be automatically notified. The Perkin's MPN is located on the Bursar's Office website at www.du.edu/bursar/perkins.html.

Federal Direct Graduate Plus Loan

The Direct Graduate/Professional PLUS loan is available to students enrolled at least half-time (4 credits) in a degree-seeking graduate level program. Students are encouraged to accept their full Federal Direct Loan eligibility before applying for the PLUS loan.

The Direct PLUS interest rate is fixed at 7.9%. There is a 2.5% loan origination fee deducted from the loan by the Department of Education. This loan fee includes an up-front 1.5% rebate, which is retained by making your first 12 monthly payments on time. Repayment on a Graduate PLUS loan is deferred while the student is enrolled at least half-time. Repayment begins 45 days after the student ceases to be enrolled at least half-time. Forbearance options are available to students who are unable to make their payments after their in-school deferment ends.

PLUS Loan borrowers are required to pass a credit check which is typically less strict than those required for private education loans. If you are denied a PLUS loan because of adverse credit, an endorser addendum is automatically mailed. You may appeal the denial or reapply with an endorser. The requested loan amount may be equal to or less than the student's total cost of attendance less all other financial aid.

financial aid, tuition & billing

Before you receive a Direct Graduate PLUS loan disbursement, you must complete online entrance counseling and sign a Master Promissory Note (MPN). Entrance counseling will provide important information about your rights and responsibilities as a loan borrower. Both of these requirements can be satisfied online through the Direct Loan website.

Apply in May to secure funding for the academic year. Funds received will be applied first to your student account and then refunded to you in the event of a credit balance.

ADDITIONAL FINANCING OPTIONS

Aside from making a full payment at the beginning of each quarter to cover your unmet costs, several financing options are available. First, decide how much you are able to pay from personal funds. Then, consider each of the following payment options and decide which one(s) will meet your needs. Be aware that some of these options charge fees or interest which increases your overall cost for education. These options are available individually or in combination to help cover the remaining cost of educational expenses.

Payment Plans

University of Denver provides students the opportunity to spread their educational costs out over several monthly payments, with a choice of either a 3 or 9 month plan for quarter term students and a 3 or 10 month plan for Law students. Each plan has an enrollment fee – the 3 month plan has a fee of \$50 per term and the 9 and 10 month plans have a one-time \$50 fee. There is no credit check requirement to enroll. For more information about these options, please visit the Bursar's Office website at www.du.edu/bursar.

Part-Time Employment

The Office of Student Employment locates and develops part-time jobs for currently enrolled students who want jobs regardless of their financial need, thus allowing them to earn money to help pay for educationally-related expenses. Part-time jobs are available off-campus with local businesses, nonprofit organizations, government agencies, DU alumni and families in the Denver community. You will earn at least the current state minimum wage, but the amount may be higher depending on the type of work you do and the skills required. Additional information about part-time employment may be found at www.du.edu/studentemployment.

Private Scholarships

If you applied for and received private scholarship funds, be sure to notify the Office of Financial Aid. Any private scholarship that is not listed on your award letter may affect your financial aid awards. If you have not applied for private scholarship funds, it's not too late to get started. Here are some tips to aid you in your search:

- A search for private scholarships can be time intensive. Therefore, it's important to have an organized system to find, apply for, and receive scholarships. Most of the information you will need to provide on a scholarship search questionnaire will be demographic, but you may also be asked about your academic, extracurricular and career plans. You can begin this search on the University of Denver Scholarship page at www.du.edu/finaid/gradprivateschol.htm.
- Organizations of all types and sizes sponsor scholarships. Explore local organizations you might not have considered, such as religious, community service, fraternal, military, union and professional. In addition, some companies may offer tuition reimbursement programs for their employees.

financial aid, tuition & billing

- You can also use a free scholarship search service. The service collects information on hundreds of awards and compares your student characteristics with scholarship restrictions. Based on your answers to a questionnaire, you will receive a list of possible scholarships. You can then decide which ones to apply for. Common search services include: www.finaid.org, www.fastweb.com or www.scholarships.com.

Private Education Loans

Terms of private loans vary significantly. They require a credit check and/or debt-to-income ratio check on the borrower and/or co-borrower. In some cases, a co-borrower may be required. Lower interest rates may be available to students who choose to have a co-borrower. Students should consider applying for a PLUS loan before pursuing a private loan.

University of Denver wants students to compare lenders and make informed loan selection choices. The Office of Financial Aid provides information on lenders who offer competitive products, good customer service and meet the University's electronic processing requirements. The list of lenders is provided to give you an idea of what is available, though you are not required to borrow from those listed. For specific information regarding terms and rates, please contact the lenders directly. Recommended lender information is available on the Office of Financial Aid website at www.du.edu/finaid/privateloans.htm.

You initiate the loan process with the lender you select. Applications may be available online at the lender's website or by contacting the lender by phone. Once the borrower's and/or co-borrower's credit is approved, DU will receive a request from the lender to certify the loan. We will certify the loan for the lesser of the amount you request on your application or the maximum amount allowed by your financial aid budget (total cost minus other financial aid). Apply in May to secure funding for the academic year. Funds received will be applied first to your student account and then refunded to you in the event of a credit balance.

A Self-Certification form is required by lenders prior to disbursing private loan funds. By submitting this form, you confirm that you are aware of your federal financial aid options. Self-Certification forms can typically be obtained from the lender. Due to additional regulations for private educational loans, the timeline for obtaining this type of loan will be longer than in past years. You should apply early, as the private loan process may take several weeks.

financial aid, tuition & billing

2011-2012 Graduate Cost Worksheet

CHARGES	RATE		DIRECT COSTS PER TERM
TUITION			
Graduate Students (except Daniels College of Business)	\$1,026 x _____ credit hours	Flat rate of \$12,312 applies between 12-18 credits	\$ _____
Daniels College of Business (DBC)	\$1,026 x _____ credit hours		\$ _____
DCB Professional MBA	\$1,112 x _____ credit hours		\$ _____
DCB Executive MBA	\$12,400 per quarter		\$ _____
University College (on campus) (online)	\$461 x _____ credit hours		\$ _____
	\$507 x _____ credit hours		\$ _____
Graduate Tax	\$850 x _____ credit hours		\$ _____
Education - Licensure and Outreach	\$513 x _____ credit hours		\$ _____
Grad School of Social Work – Durango	\$565 x _____ credit hours		\$ _____
FEES			
Graduate Activity Fee	(Not charged for University College or Grad Tax)	\$50	\$ _____
Technology Fee	\$4 x _____ credit hours		\$ _____
Graduate Health and Counseling Fee		\$144	\$ _____
DU HEALTH INSURANCE	(Required for traditional full-time students. Can be waived if you have your own coverage.)		
Insurance coverage is for 6 months and is billed fall and spring quarters only.		\$1,210	\$ _____
TOTAL DIRECT COSTS PER TERM			\$ _____
FINANCIAL AID	ANNUAL AID		FINANCIAL AID PER TERM
SCHOLARSHIPS/GRANTS	\$ _____ \$ _____ \$ _____	Divide annual financial aid by 3 for quarters	\$ _____ \$ _____ \$ _____
FEDERAL PERKINS LOAN	\$ _____		\$ _____
FEDERAL DIRECT LOAN (subsidized)*	\$ _____		\$ _____
FEDERAL DIRECT LOAN (unsubsidized)*	\$ _____		\$ _____
TOTAL FINANCIAL AID	\$ _____		\$ _____
TOTAL DIRECT COSTS PER TERM – LESS TOTAL FINANCIAL AID PER TERM – LESS OTHER RESOURCES PER TERM Other resources could include an estimate of Americorps, Veterans benefit, tuition waivers or employer reimbursement.			\$ _____ \$ _____ \$ _____
REFUND or AMOUNT DUE PER TERM If this number is negative, this is your REFUND PER TERM If this number is positive, this is your AMOUNT DUE PER TERM			\$ _____ \$ _____ \$ _____

Payment options include, but are not limited to: cash, check or money order; credit card payments; monthly payment plan; and/or additional financial aid. By completing a federal financial aid application you are eligible to borrow a Graduate PLUS Loan up to the cost of attendance less any other financial aid or resources you receive to cover direct and indirect costs throughout the year. These loans are credit-based. Loan proceeds are paid directly to student tuition bills each quarter/semester.

Indirect costs are costs of attending school that include books and supplies, housing and meals, personal expenses and transportation expenses not billed through the University of Denver. The total cost of attendance is based on a nine-month student budget that includes costs typically incurred by all students. The budget parameters have been determined by the Colorado Department of Higher Education and by the Office of Financial Aid.

*Direct Loans have .5% origination fee, which includes an up-front fee rebate of .5%. In order to retain the rebate, you must make your first 12 payments on time. If you do not, the rebate will be added back into the loan principal.

financial aid, tuition & billing

Bursar's Office

The Bursar's office bills for tuition and fees; advises on billing and payments; and provides cashiering, student debt management and Perkins loan services. Detailed information about these services is available on our website. We look forward to working with students concerning their investment in higher education.

The budget worksheet in the financial aid portion of this section details the cost of attendance for the 2011-2012 academic year.

DUE DATES FOR 2011-2012

Tuition and Fee bills are due 10 days prior to the first day of classes for each term. The Bursar's office will send an ecoBill to the electronic billing address selected by the student approximately six weeks before the beginning of each term. There is an exception for a student's first quarter on campus; in this case, tuition and fee bills will be generated the first day of class and will be due on September 23 (Law students should contact the College of Law for distribution dates). Current billing information is available at any time through myWeb.

Quarter Terms

Autumn quarter	September 2, 2011 or September 23 for first-year students
Winter quarter	December 24, 2011
Spring quarter	March 16, 2012
Summer quarter	June 8, 2012

Semester Terms

Autumn semester	August 5, 2011
Spring semester	January 1, 2012
Summer semester	May 19, 2012

Please note: University College schedules may vary from the standard calendar.

Please pay attention to due dates. Students should budget accordingly to avoid unnecessary delays in registering for future terms. The University may assess late fees and hold registration and transcripts for unpaid balances.

PAYMENT OPTIONS

The University accepts cash, checks and bank wires. The University has contracted with Tuition Management Systems (TMS) to provide credit card and electronic ACH (Automated Clearing House) payment options. There will be a fee associated with credit card payments processed through TMS. The University also offers an interest-free monthly payment plan. The plan allows participants to spread the tuition and fee expense over equal monthly payments. There is a nominal setup fee and there is no credit check requirement. We encourage enrolling in the plan by June 1 to receive the maximum benefit. Please check the Bursar website for details and updates on payment options at: www.du.edu/bursar/options.html.

financial aid, tuition & billing

REFUNDS OF EXCESS LOAN PROCEEDS

Federal Stafford, Federal Perkins, Federal PLUS and private loans are disbursed directly to your tuition account after all requirements (see financial aid information) have been satisfied. If the total loan proceeds are greater than the total account charges, a refund check will be issued to the student for the excess amount. Students are encouraged to register for direct deposit of refunds to their checking or savings account. Registration can be completed through myWeb. If students do not register for direct deposit, refund checks are mailed to the mailing address designated by the student. Dates for receiving refunds are determined by disbursement dates. Please see the Bursar website for the most current information.

TUITION REFUNDS

A student withdrawing or dropping courses early in the term may receive a partial reduction of tuition charges based upon the published Registration calendar. The student will be responsible for paying any unpaid balance after tuition and financial aid are adjusted for the change in enrollment.

EMPLOYER REIMBURSEMENT

The Employer Reimbursement Payment option is available to students whose employers require course completion prior to reimbursing the student for incurred tuition and fees. This option allows the student to defer the reimbursed portion of tuition and fees until after the conclusion of the academic term. The Employer Reimbursement Payment Agreement is available as a downloadable form on the Bursar website: www.du.edu/bursar/employer.html.

EDUCATION TAX BENEFITS

Each calendar year the Bursar's office sends a 1098-T form to anyone who has had tuition charges or financial aid billed through the University. You may be eligible for federal tax deductions or credits. In order to report correct tax information, a valid social security number must be on file with the University. Please contact your tax advisor or IRS publications for additional information.

Quick points to facilitate paying for your education:

- File your FAFSA and supporting documents in a timely manner.
- Remember to sign your promissory note and complete an entrance interview.
- Keep records of your bills and payments.
- Take time to budget for tuition and fee expenses each academic year.

Advisors in the Bursar's Office are available to answer your billing and payment questions. **Welcome to DU!**

financial aid, tuition & billing

Tuition and Fees

TUITION

Tuition for the 2011-2012 academic year is \$12,312 for enrollment between 12-18 quarter hours for Graduate Studies and Graduate Professional Schools, excluding the Daniels College of Business. Students enrolled in the flat-rate program will be assessed tuition of \$1,026 per quarter hour in addition to the flat-rate for enrollment over 18 hours. All other programs are billed by credit hour at the following rates:

College of Law	\$1,261
Graduate Tax	\$850
Daniels College of Business-Graduate	\$1,026
Education Licensure and Outreach	\$513
University College	\$461-507 (this rate may vary)

HEALTH INSURANCE

The health insurance premium is assessed to most graduate students. The health insurance is charged to your billing statement each fall and spring term. If you have adequate coverage, you may waive the insurance by completing a waiver form on myWeb (<https://myweb.du.edu>). The waiver must be completed by the published deadline for each term. Please print the confirmation page for your personal records.

STUDENT TECHNOLOGY FEE

To enhance opportunities for technology use in and out of the classroom, and to provide multiple modalities of learning, a technology fee will be charged to all DU students. The fee will be assessed at the rate of \$4 per credit hour. Students taking 12-18 hours in a program with a flat rate will be assessed a \$48 technology fee.

STUDENT ACTIVITY FEE

A student activity fee of \$50 per quarter is assessed to graduate students. Law students are assessed a one-time student activity fee of \$190 for the first term of enrollment.

HEALTH AND COUNSELING FEE

The Student Health and Counseling fee is assessed each academic term with registration of six or more credit hours. The student health and counseling fee primarily maintains the Student Health and Counseling Center (SHCC) and reduces student out-of-pocket expenses at the SHCC. Please visit www.du.edu/duhealth or call 303.871.2205 for additional information. Graduate students may waive this fee by completing a waiver form on myWeb.

HOUSING ROOM AND BOARD

Room and board rates vary. Please contact the Department of Residence for housing options: 303.871.2246, www.du.edu/housing.

PARKING

Parking permits are billed through the Bursar tuition and fee bill. Please contact Parking Services directly for rates and policies: 303.871.3210, www.du.edu/parking.

RTD COLLEGE BUS PASS

Bus passes for graduate students are included in the student activity fee. Law students are assessed \$60 each fall and spring semester for use of the RTD College Bus Pass. This is a mandatory fee.

residence/housing

contact information:

HOUSING & RESIDENTIAL EDUCATION

2055 E. Evans Ave., Denver, CO 80208

phone: 303.871.2246

e-mail: housing@du.edu

web: www.du.edu/housing/grad

residence/housing

DU Apartments

HOUSING AND RESIDENTIAL EDUCATION

Welcome to Graduate Housing! As you begin your transition to graduate school, the Housing & Residential Education staff wants to encourage you to consider on-campus living. **Here is a list of reasons to choose DU Apartments:**

Accommodations:

We currently provide both furnished and unfurnished apartments to fit your needs. With all-inclusive living, all of your housing costs are included in your tuition statement at the beginning of the quarter, so you don't have to worry about making monthly payments! Housing costs include utilities (water, electricity, waste and heat) and Internet. Also, some apartments include phone, basic cable and/or air conditioning.

Most importantly, we offer housing to suit your academic plan. Only going to be on campus for three quarters? Don't want to be bound to a 12-month lease? Don't worry. If you choose DU Apartments, you will only be charged for the number of quarters you live on campus.

24 hour support, 7 days a week

Each building is staffed with an Apartment Advisor (AA) who is a graduate student who works to ensure a comfortable and safe living environment. The AA staff also provides 24/7 assistance for lockout emergencies or any maintenance issues to make certain you always have the support you need.

The transition to grad school is tough! That is why each AA is dedicated to building community within the apartment complex and also amongst the campus. The DU Apartments' staff designs programming tailored to the specific needs of the graduate student.

On-Campus Convenience

The location of the DU Apartments is unbeatable. Nearly every building is just steps from your classrooms, Penrose Library or the Ritchie Athletic Center. With on-campus living, you will be immersed in the DU culture and making your transition to Colorado easier and more enjoyable.

The following pages provide descriptions and floorplans of all units offered at DU Apartments. For more information, please visit our website, www.du.edu/housing/grad, or contact our friendly staff at 303.871.2246

residence/housing

Cavalier Apartments – 1 bedroom

2369 S. Gaylord St., Denver, CO 80210

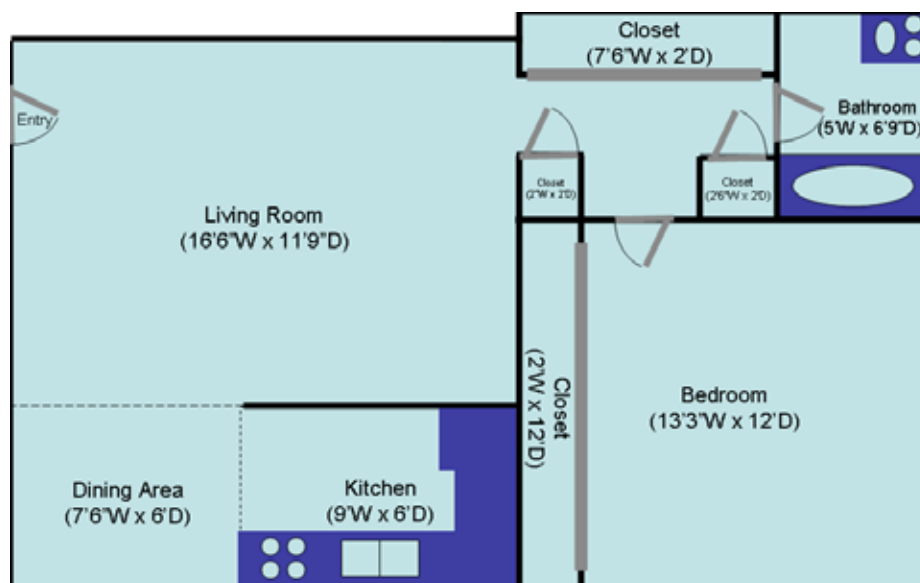
2011-2012 Costs: Quarterly: \$2,550 Semester: \$3,825 Yearly: \$7,650

Amenities: Utilities, Internet, Unfurnished Apartments

Specifications:

Room	Width (ft)	Depth (ft)	Square Feet
Bathroom	5.00	6.75	33.75
Bedroom	13.25	12.00	159.00
Closets	7.50	2.00	15.00
	2.50	2.00	5.00
	2.00	2.00	4.00
	2.00	12.00	24.00
Dining Room	7.50	6.00	45.00
Hallways, etc.	3.00	9.50	28.50
Kitchen	9.00	6.00	54.00
Living Room	16.50	11.75	180.00
Approximate Total Square Footage			584.25

*Please note that all measurements are approximations and not necessarily exact.



residence/housing

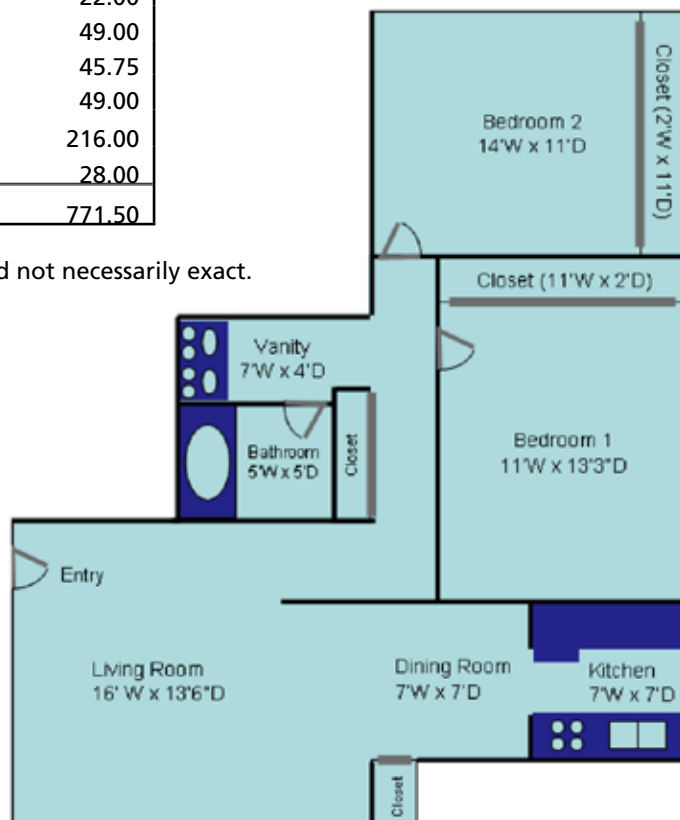
Cavalier Apartments – 2 bedrooms

2369 S. Gaylord St., Denver, CO 80210

2011-2012 Costs: Quarterly: \$1,936 Semester: \$2,904 Yearly: \$5,808**Amenities:** Utilities, Internet, Unfurnished Apartment**Specifications:**

Room	Width (ft)	Depth (ft)	Square Feet
Bathroom	5.00	5.00	25.00
Bedroom 1	11.00	13.25	145.75
Bedroom 2	14.00	11.00	154.00
Closets	2.00	2.00	4.00
	2.00	5.50	11.00
	11.00	2.00	22.00
	2.00	11.00	22.00
Dining Room	7.00	7.00	49.00
Hallways, etc.	3.00	15.25	45.75
Kitchen	7.00	7.00	49.00
Living Room	16.00	13.50	216.00
Vanity	7.00	4.00	28.00
Approximate Total Square Footage			771.50

*Please note that all measurements are approximations and not necessarily exact.



residence/housing

Cavalier Apartments – Studio

2369 S. Gaylord St., Denver, CO 80210

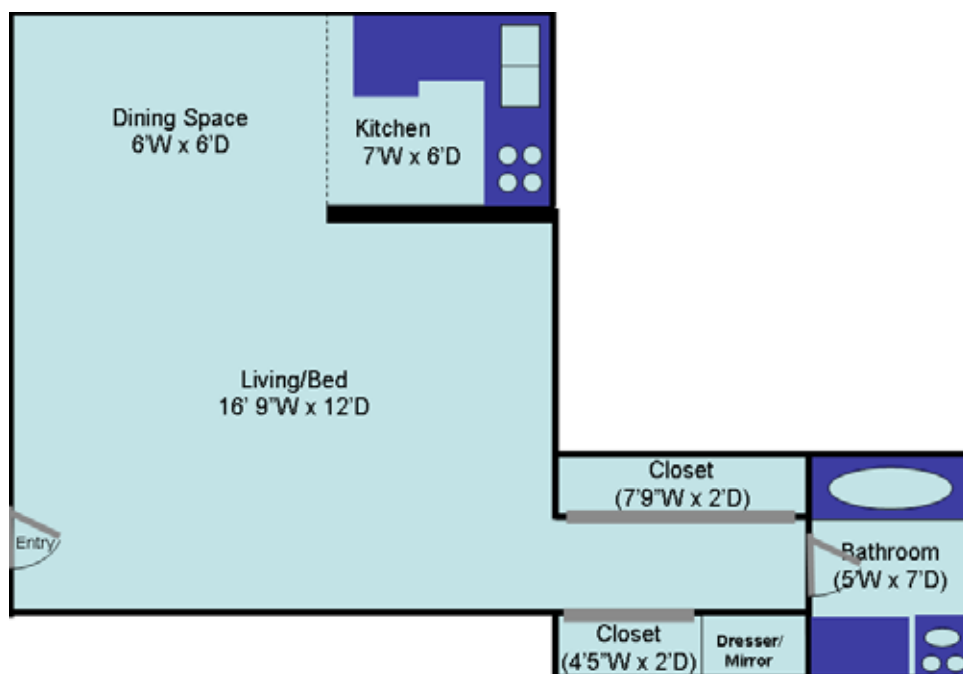
2011-2012 Costs: Quarterly: \$2,072 Semester: \$3,108 Yearly: \$6,216

Amenities: Utilities, Internet, Unfurnished Apartment

Specifications:

Room	Width (ft)	Depth (ft)	Square Feet
Bathroom	5.00	7.00	35.00
Closets	4.50	2.00	9.00
	7.75	2.00	15.50
	3.25	2.00	6.50
Hallways, etc.	7.75	3.00	23.25
Kitchen	7.00	6.00	42.00
Living/Bed	16.75	12.00	201.00
Approximate Total Square Footage			332.25

*Please note that all measurements are approximations and not necessarily exact.



residence/housing

Summit Apartments

1904 S. York St., Denver, CO 80210

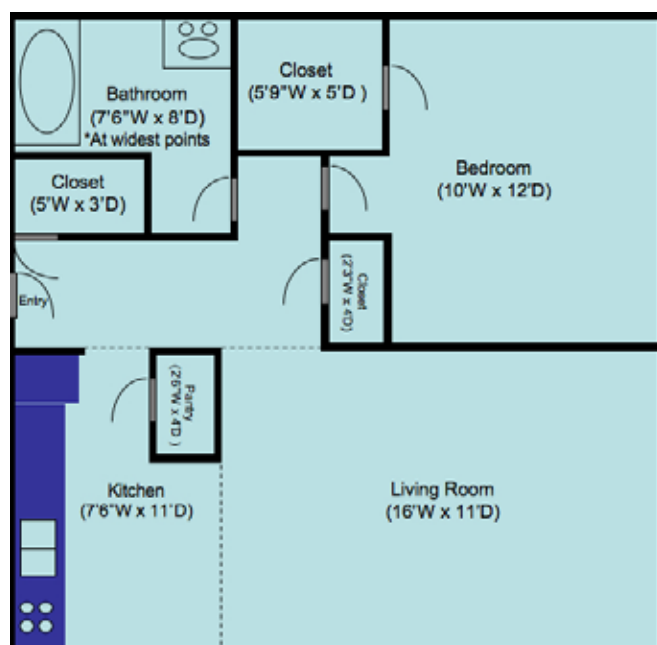
2011-2012 Costs: Quarterly: \$2,550 Semester: \$3,825 Yearly: \$7,650

Amenities: Utilities, Internet, Air Cooler, Unfurnished Apartment

Specifications:

Room	Width (ft)	Depth (ft)	Square Feet
Bathroom	7.50	8.00	60.00
Bedroom	10.00	12.00	120.00
Closets	5.75	5.00	28.75
	5.00	3.00	15.00
	2.25	4.00	9.00
Hallways, etc.	3.50	14.00	49.00
Kitchen	7.50	11.00	82.50
Living Room	16.00	11.00	176.00
Pantry	2.50	4.00	10.00
Approximate Total Square Footage			550.25

*Please note that all measurements are approximations and not necessarily exact.



residence/housing

Ridgeline Apartments – 1 bedroom

1930 S. York St., Denver, CO 80210

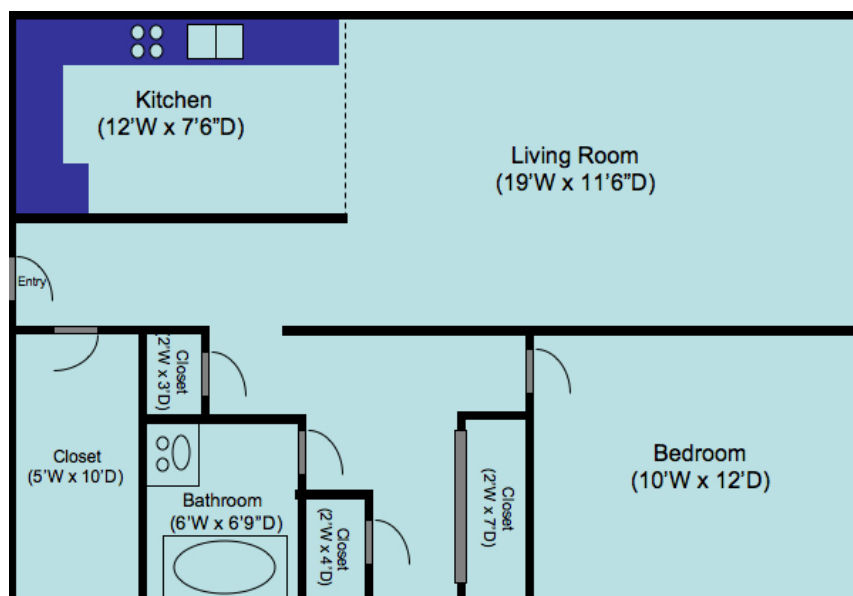
2011-2012 Costs: Quarterly: \$2,550 Semester: \$3,825 Yearly: \$7,650

Amenities: Utilities, Internet, Unfurnished Apartment

Specifications:

Room	Width (ft)	Depth (ft)	Square Feet
Bathroom	6.00	6.75	40.50
Bedroom	10.00	12.00	120.00
Closets	2.00	7.00	14.00
	2.00	4.00	8.00
	2.00	3.00	6.00
	5.00	10.00	50.00
Hallways, etc.	4.00	40.00	160.00
Kitchen	12.00	7.50	90.00
Living Room	19.00	11.50	218.50
Approximate Total Square Footage			707.00

*Please note that all measurements are approximations and not necessarily exact.



residence/housing

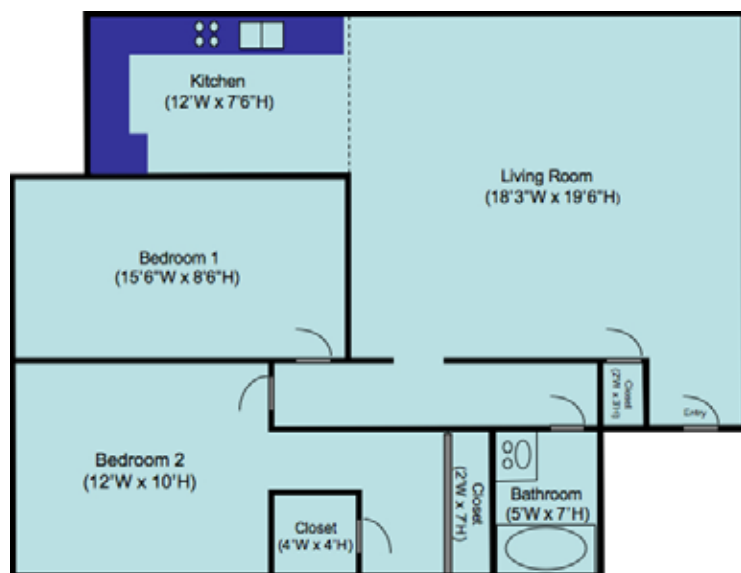
Ridgeline Apartments – 2 bedroom

1930 S. York St., Denver, CO 80210

2011-2012 Costs: Quarterly: \$1,936 Semester: \$2,904 Yearly: \$5,808**Amenities:** Utilities, Internet, Unfurnished Apartment**Specifications:**

Room	Width (ft)	Depth (ft)	Square Feet
Bathroom	5.00	7.00	35.00
Bedroom 1	15.50	8.50	131.75
Bedroom 2	12.00	10.00	120.00
Closets	2.00	3.00	6.00
	4.00	4.00	16.00
	2.00	7.00	14.00
			0.00
Hallways, etc.	3.50	14.00	49.00
Kitchen	12.00	7.50	90.00
Living Room	18.25	19.50	355.88
Approximate Total Square Footage			817.63

*Please note that all measurements are approximations and not necessarily exact.



residence/housing

Mesa Apartments – 1 Bedroom

1925 S. York St., Denver, CO 80210

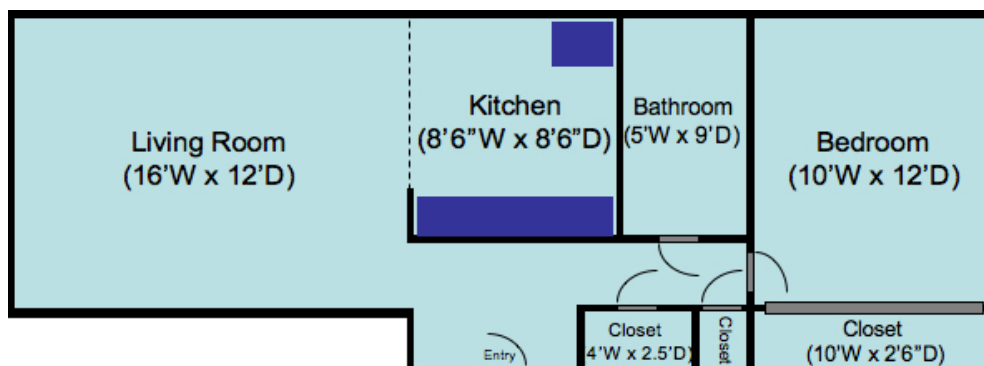
2011-2012 Costs: Quarterly: \$2,778 Semester: \$4,167 Yearly: \$8,334

Amenities: Utilities, Internet, Air Cooler, Furnished Apartment

Specifications:

Room	Width (ft)	Depth (ft)	Square Feet
Bathroom	5.00	9.00	45.00
Bedroom	10.00	12.00	120.00
Closets	10.00	2.50	25.00
	2.50	2.50	6.25
	2.50	4.00	10.00
Hallways, etc.	13.50	3.50	47.25
Kitchen	8.50	8.50	72.25
Living Room	16.00	12.00	192.00
Approximate Total Square Footage			517.75

*Please note that all measurements are approximations and not necessarily exact.



residence/housing

Mesa Apartments – Studio

1925 S. York St., Denver, CO 80210

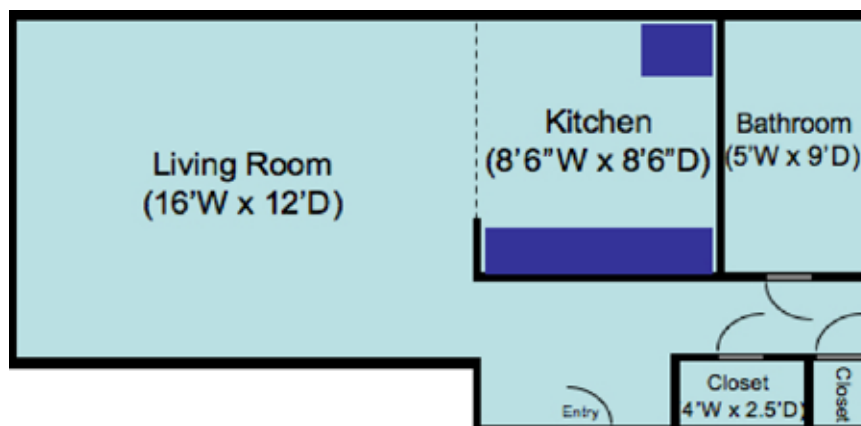
2011-2012 Costs: Quarterly: \$2,256 Semester: \$3,384 Yearly: \$6,768

Amenities: Utilities, Internet, Air Cooler, Furnished Apartment

Specifications:

Room	Width (ft)	Depth (ft)	Square Feet
Bathroom	5.00	9.00	45.00
Closets	2.50	4.00	10.00
	2.50	2.50	6.25
Hallways, etc.	13.50	3.50	47.25
Kitchen	8.50	8.50	72.25
Living Room	16.00	12.00	192.00
Approximate Total Square Footage			372.75

*Please note that all measurements are approximations and not necessarily exact.



campus safety & parking services

contact information:

DEPARTMENT OF CAMPUS SAFETY

2130 S. High Street, Denver, CO 80208

emergency: 303.871.3000

routine: 303.871.2334

administration: 303.871.2139

OFFICE OF PARKING SERVICES

2130 S. High Street, Denver, CO 80208

phone: 303.871.3210

email: parking@du.edu

website: www.parking.du.edu

campus safety & parking services

Campus Safety

AN OVERVIEW

University of Denver's Campus Safety Department is a service-oriented organization, which aspires to provide a safe environment conducive to learning, living and working. Campus Safety's offices are located at 2130 S. High St. (Evans Parking Structure).

Campus Safety focuses its efforts on the safety of DU students, faculty, staff and visitors. Campus Safety personnel are highly trained, proud professionals dedicated to serving the DU community.

Campus Safety is only a phone call away. Our officers are radio dispatched and can respond to your needs within minutes. To aid you when walking on and around campus, there are over 100 Blue Light Emergency Phones placed in strategic locations, including parking lots and garages in the vicinity of residence halls and academic buildings.

Call Campus Safety, should you have any questions. We are here to serve you. **Campus Safety may be reached in an emergency at 303.871.3000 or non-emergency at 303.871.2334.**

CAMPUS SAFETY OFFICERS

Campus Safety Officers are highly trained professionals ready to serve you. Their responsibility is to prevent and suppress crime, protect life and property, and preserve peace throughout the DU community. Their duties include:

- Patrol of campus, parking lots and surrounding areas
- Enforce state and municipal statutes and ordinances, as well as University regulations
- Provide crisis intervention management
- Respond to all calls for help: medical emergencies, reports of crimes, crimes in progress and suspicious activities
- Initiate written reports on incidents of crime, accidents, suspicious activities and personal injuries involving DU students, faculty, staff and campus visitors
- Provide dignitary and executive protection
- Provide security services to all campus areas
- Foot patrol of campus buildings and grounds
- Ensure the overall security of University buildings
- Provide after hours access to academic and administrative areas for authorized persons
- Watch for and report suspicious activities
- Assist Denver Police Officers at crime scenes and with investigations
- Enforce University parking rules and regulations
- Assist motorists with jump-starts
- Monitor, coordinate and direct all departmental radio communications
- Respond to incoming calls for assistance and information as received by telephone and the Blue Light Phone system
- Monitor campus alarm systems and ensure appropriate response
- Operate and monitor video surveillance systems

campus safety & parking services

COMMUNICATIONS OFFICERS

Communication Officers operate the Department's Communication Center. In doing so, they coordinate Campus Safety's response to incidents occurring on and near campus. Their duties include:

- Monitor, coordinate and direct all departmental radio communications
- Respond to incoming calls for assistance and information as received by telephone and the Blue Light Phone system
- Monitor campus alarm systems and ensure appropriate response
- Operate and monitor video surveillance systems
- Serve as an informational source for members of the DU community and the general public

PARKING AND TRAFFIC

The Parking Services Office is responsible for all parking areas on campus including surface lots, parking structures, loading zones and restricted areas, such as gated parking lots.

Security of parking areas is maintained by vehicular and foot patrol, video surveillance of select lots and lot attendants during special events.

The Parking Services Office is located in the Campus Safety Center at 2130 S. High St. and open from 9:00 a.m. to 5:00 p.m., Monday through Friday.

CRIME PREVENTION

Crime prevention is an important part of the Department of Campus Safety. Most crimes on campus can be avoided. Our Crime Prevention Team can help educate you on how to avoid being a victim through a series of programs including:

- Vehicle Protection
- Operation Identification
- How to be Street Wise and Safe
- Sexual Assault Prevention
- Home Security
- Pepper Spray Defense
- Office Security
- Personal Safety Tips
- R.A.D. Self-Defense Program

We need your help to put a stop to crime. We want your experience at DU to be safe and enjoyable. For additional information, **Crime Prevention may be reached at 303.871.3019.**

campus safety & parking services

VICTIM/WITNESS SERVICES

Being victimized is often a traumatic experience. Campus Safety's Crime Prevention officer can counsel you on the criminal justice process so that it will be understandable.

If you should become a victim or witness to a crime, the Crime Prevention Office can help by:

- Providing referrals for medical and psychiatric counsel
- Providing assistance when classes conflict with court appearances
- Conducting follow-up investigations to provide up to date information

Victim Services may be reached at 303.871.3019

STREETWISE AND SAFE

You can do a great deal to reduce your risk of becoming a victim of crime. The most effective weapons against crime are COMMON SENSE, ALERTNESS and INVOLVEMENT. Armed with these, you can protect yourself by reducing the opportunity for muggers, purse-snatchers and other criminals to strike. By following these suggestions, you join other members of the DU Community in making the streets safer for everyone.

Elementary Street Sense

- Wherever you are, be alert to what's going on around you. Don't daydream or become distracted. Look to see who is ahead, beside and behind you.
- Don't listen to music via headphones or carry on a phone conversation. These actions may reduce your awareness.
- Communicate visually that you are a calm, confident individual. Stand tall with your head erect and walk purposefully. Make quick eye contact with the people around you so that you give the impression of awareness.
- Always trust your instincts. If you feel uncomfortable in a place or situation, leave as soon as possible.
- Remember, crime knows no boundaries! Don't drop your guard just because you're on or near DU property.

Walking Smart

- Plan the safest route to your destination and USE IT!
- Walk with a companion whenever possible.
- Take time to learn the neighborhood. Take a few minutes to notice what stores are open, type of street lighting and the locations of telephones may be important if you need help later.
- Keep purses close to your body and maintain a firm grip on them. Wallets should be carried in the front pocket.
- Don't overburden yourself with books, backpacks or packages.
- Avoid carrying large amounts of cash. Leave valuables, such as expensive jewelry and clothing, at home.
- Don't give money to strangers. Your "loose change" is not really going to help their situation. Instead, volunteer your services to local programs designed to help those in need.
- Have your path go by blue light phones if possible.
- When walking, take note of potential hiding spots and use caution as you approach them.
- Use the DU Shuttle Service after dark. For schedule information please visit www.du.edu/campus-safety.

campus safety & parking services

Elevator Sense

- Familiarize yourself with the emergency buttons of the elevators you ride frequently. Always stand near the controls.
- Get off the elevator if someone suspicious enters. Don't get on the elevator with someone you feel uneasy about.
- If you're attacked while in the elevator, hit the alarm button and as many floor buttons as possible.

Jogging, Biking and other Outdoor Activities

- Go with a friend. It's more fun and safer, too!
- Choose your route in advance and vary it. It's not a good idea to always travel the same route, at the same time of day.
- Avoid isolated areas. Try to do your activities with others and where others are present.

Vehicular Safety

- Always lock your vehicle doors, even when driving. Don't place valuables on the seat next to you in plain view. Keep items in the trunk.
- Have your key in hand when approaching your vehicle to allow for quick access. Remember to look into the back seat area before entering.
- Unlock only the driver's door and enter the vehicle immediately, once inside, lock vehicle doors.
- Park in well lit areas, which are visible to other people.
- Keep your vehicle in good condition and always have enough gas to get where you're going and back again.
- If you experience car trouble, raise the hood and remain in your vehicle with the doors locked. If someone offers to help, ask them to call the Police or if on campus the Campus Safety Department for you.

Tips for Buses

- Use well-lit, busy stops. Wait with other people when possible.
- Sit near the front of the bus or first/light rail car, close to the driver.
- Don't fall asleep!
- If someone is harassing you, tell him or her firmly and loudly, "leave me alone!" Persistent persons should be reported to the driver.
- As you prepare to get off the bus/light rail, take note of suspicious persons who are exiting with you. Consider remaining on the bus/light rail; if necessary, ask the driver for assistance.
- Be alert to who gets off the bus/light rail with you. If you feel uneasy, walk directly to a place where there are other people.

campus safety & parking services

If You Become a Victim of a Crime

- Remain calm and try not to panic.
- Try to obtain a helpful description of the assailant. Sex, race, age, height, weight, type of clothing and distinguishing marks will be valuable to the police when searching for the assailant. If a vehicle is involved, try to remember its make and license plate number.
- Don't resist if the assailant is armed and is only after your valuables. Property can be replaced! If resistance is an option, don't get scared, get mad! Shout, "NO!" "STOP!" "FIRE!" or "CALL THE POLICE!" loud and forcefully.
- Do what you can to distract the assailant long enough to escape safely.
- After you have become the victim of a crime or have witnessed a crime, call Campus Safety or the Police immediately! Identify yourself and your location.
- Remember that any crime is a traumatic experience. We can help you get through it. Our Victim/Witness Services area offers assistance to those who have been victimized by or witnessed a criminal act. Services available include counseling and support at every step of the recovery process, including legal procedures if needed.

A Final Note

Our Crime Prevention Specialist can provide you or your group with more information about these and other safety-related topics. **To schedule a safety presentation, call 303.871.3019.**

VEHICLE SAFETY

Vehicle theft is a serious crime that is on the increase. Thieves steal from parking lots because the owners usually do not return to their cars for some period of time. Thefts from vehicles are also on the increase. Most vehicle thefts and thefts from motor vehicles can be prevented. But, it is up to YOU to take precautions.

Prevention Tips

- Park in a well-lit and busy area, particularly at night or if you expect to return to your car after dark. This will allow your vehicle to be more visible to passers-by.
- After parking your vehicle, turn the steering wheel to make sure it locks into place. On the street, turn the wheels toward the curb to make it more difficult to move or tow it.
- Lock your car and pocket the key whenever you park your vehicle. Many stolen automobiles are left unlocked and some times with the key in the ignition! **Make sure that your doors and windows are locked.**
- Close all windows and make sure the trunk or hatch is locked. Replace door locks with smooth tapered ones, which are more difficult to open with a wire or a coat hanger.
- Take everything of value with you or lock items in your trunk. Don't leave packages, portable radios, i-pods, loose change or other valuables in plain view to tempt a thief.
- Never hide vehicle keys under the bumper, hood or floor mat. You won't be able to think of a place to hide the keys that thieves don't already know about.

campus safety & parking services

Prevention Tips

- Do not put your name, address or license plate number on your key ring. If your keys are lost or stolen, it will help a thief find your car or house.
- When you return to your car, check to make sure your hubcaps, antenna and license plates are still attached. Memorize your license plate number.
- Through the use of Operation ID, (contact your local police department for additional information). You can engrave your driver's license number on items such as car stereos, tape decks, CD players, etc. You can also use an engraving tool to mark your car itself to aid in identification. Professional car thieves often remove the manufacturer's Vehicle Identification numbers (VIN) but may overlook one that you engraved onto the vehicle.
- Drop personal business cards or return address labels down the windows inside of the car doors. These may be used by authorities to positively identify your car.
- Notify Campus Safety of burned-out lights, debris, defective gate mechanisms, damaged fencing or other problems in the parking areas.
- IMMEDIATELY report suspicious persons or activity around vehicles to Campus Safety (303.871.3000) or by using a Blue Light Phone when practical. It is important to report all crimes to Campus Safety so that appropriate action can be taken. Investigations involving autos are enhanced when a pattern can be established.

Anti-theft Devices

- Consider using a mechanism that when locked into place onto a steering wheel, prevents it from being turned.
- Alarms that activate a siren, horn, lights, door, hood or trunk when opened.
- A steel collar that fits over the steering column, preventing a thief from "prying open" the column to start the ignition.
- A locking hood or gas cap.
- Transparent film which, when applied to windows, renders the glass many times stronger. The glass will break upon impact but will stay in place when shattered.

Campus Safety Services

- Closed Circuit Television Cameras are installed in some University parking lots. Campus Safety Dispatchers are able to monitor, record, scan and zoom in on activity in the parking lots.
- If you need a jump-start, call Campus Safety for free assistance, (non-emergency at 303.871.2334).
- Campus Safety routinely patrols University parking lots daily.
- Blue Light Emergency Phones are available in and near University parking lots.

campus safety & parking services

DU SHUTTLE SERVICE PROGRAM

The University of Denver, like most institutions of higher education is confronted with challenges for all members of its community. In order for the University to attain its mission and goals, the safety and welfare of the entire community must be met, including faculty, staff and students.

The DU Shuttle Service (formally called the DU SafeRide) is a pro-active step, initiated by undergraduate and graduate students, to ensure the safety needs of the entire community. To that end, DU Shuttle Service will provide dedicated van escort service during the academic year from early evening through early morning hours for any person with a DU Pioneer ID Card. Please visit the Campus Safety website www.du.edu/campus-safety for more information.

The DU Shuttle Service will operate a fixed route that will circle through the campus stopping at high-traffic destinations with a 12-passenger van. In addition, there will be an ADA compliant van that will provide point-to-point access for individuals with disabilities.

IMPORTANT NUMBERS

DU Campus Safety

Emergency	x13000	303.871.3000
Routine	x12334	303.871.2334
Administration Office	x12139	303.871.2139

Denver Police Department

Emergency	911
Routine	720.913.2011

UNIVERSITY OF DENVER BICYCLE PROGRAM

The University of Denver campus and the Denver metro area provide exceptional bicycling opportunities. The Department of Campus Safety wants all of your bike trips to be safe and enjoyable. Below there are safety and theft prevention tips along with information on bike registration. We encourage you to consider these tips, register your bike and remember to follow all local and state laws whenever you ride. Happy cycling!

Bike Theft Prevention

Anyone who parks a bicycle on the University of Denver campus is required to secure their bike with a U-Locking device. **Cables and ordinary padlocks are easily defeated by thieves and should never be used.**

When a bicycle is found to be secured with an inadequate lock, chain or cable, a Campus Safety Officer may secure the bike with a U-Lock. A "Notice of Immobilization" card will be placed on your bicycle with instructions on how to get your bicycle released.

campus safety & parking services

In order to get your bicycle released

Contact the Parking Service Office during regular business hours:
8:00 a.m. to 5:00 p.m., Monday – Friday
Please call 303.871.3825

After business hours, contact Campus Safety:
5:00 p.m. to 10:00 p.m., Monday – Friday
Please call 303.871.2334

Registration

All bicycles parked on campus should be registered with Campus Safety. Simply visit www.du.edu/campus-safety, select “Crime Prevention” then click on “Bicycles.” Registration is free! Bicycle registration is also available at other locations at the beginning of each academic quarter. Bicycle safety information, city maps and laws are available as well.

To register your bicycle, you need only the make, model and serial number. A sticker with an identification number is provided to be adhered to your bicycle.

For information or advice on proper storage of your property, contact the crime prevention division of the Department of Campus Safety at 303.871.3019.

Bike Safety Tips

- Wear a helmet! A helmet can prevent serious or even fatal head injuries. Your helmet should be replaced if it has taken the impact of a crash or after five years of normal use.
- Wear gloves and comfortable, bright colored clothing.
- Carry only what the bicycle is designed or equipped to carry.
- Assume that other drivers don't see you until you are sure that they do. Eye contact is important with any driver that might pose a threat to your safety.
- Ride predictably. Obey traffic laws and traffic control devices. Do not impede the flow of traffic and use hand signals. Ride with traffic, not against it.
- Always give pedestrians the right-of-way.
- Respect the normal flow of pedestrian traffic.
- Secure your bicycle to an authorized bike rack; not a tree, guardrail, light post, etc. This will ensure that your bike will not be in a position that blocks pedestrian flow.
- Use lights and reflective clothing at night.
- Slow down at intersections and look for on-coming traffic. Obey all traffic control devices.

campus safety & parking services

RAPE AGGRESSION DEFENSE

R.A.D. PROFILE

The national standard in self-defense Instructor Certification, R.A.D. is internationally recognized for programming quality and organizational commitment to excellence. R.A.D. Systems balances the needs of women to acquire self-defense education in a relatively short period of time, with the life long commitment required for physical skill mastery. How? By providing short term training opportunities in a progressive building block format and combining each with R.A.D.'s trademark Lifetime Return and Practice Policy! Only a unified, extensive network can provide this service, honored nationwide and throughout Canada. While other programs and/or instructors struggle to keep pace, R.A.D. instructors share life saving information with confidence, knowing that their lessons will be continuously reinforced for a lifetime!

WHAT IS R.A.D.?

The Rape Aggression Defense System is a program of realistic self-defense tactics and techniques for women. The R.A.D. System is a comprehensive, **women-only** course that begins with awareness, prevention, risk reduction and risk avoidance, while progressing on to the basics of hands-on defense training.

R.A.D. is **not** a martial arts program.

Nationally certified R.A.D. instructors teach the course. Tyrone A. Mills is the R.A.D. Coordinator for the University of Denver Department of Campus Safety.

Larry Nadeau, a former Marine and full-time police officer, first developed the R.A.D. Systems of self-defense in 1989. His original intention was to create an affordable, accessible, realistic program that would specifically address the self-defense needs of women. Nadeau believed that a well-structured system that could be easily learned and assimilated was needed. What Nadeau has done is take a lot of different martial arts and defensive tactics movements and forms, and reduced them to a few basic, easy-to-learn, and effective techniques. This basic self-defense course actually becomes, in effect, an introduction to applied aggression for females.

WHY R.A.D.?

- R.A.D. is the largest network of its kind, with over 2000 instructors actively teaching at various colleges and institutions today, and almost 4000 total instructors trained to date.
- R.A.D. has trained over 200,000 women since the program began in 1989.
- R.A.D. is the only existing program with a free lifetime return and practice policy, honored throughout both the US and Canada.
- R.A.D. has developed specialized simulation techniques and equipment for use by certified R.A.D. instructors.
- R.A.D. is the only self-defense program ever endorsed by the International Association of Campus Law Enforcement Administrators (IACLEA).

For More Information

Tyrone A. Mills 303.871.2139
 E-mail: rad_training@du.edu
 Official R.A.D. Website: www.rad-systems.com

campus safety & parking services

CAMPUS RESOURCE NUMBERS

Denver Police	911
Diversity Issues	303.871.7436
Disability Services	303.871.2150
Emergency	303.871.3000
Harassment/Discrimination	303.871.2307
Health & Counseling Center	303.871.2205
Non-Emergency	303.871.2334
Office of Student Conduct	303.871.4505
Parking Services	303.871.3210
Poison Center	303.629.1122
Rape Crisis Hotline	303.322.7273
Student Health Services	303.871.2205

campus safety & parking services

Parking Services

There are two types of parking lots on campus: lots that require a permit and pay-by-space visitor lots. Students living in on-campus housing with a vehicle on campus are required to purchase a University of Denver parking permit (General or Restricted). **Parking on residential streets is prohibited.**

HOW TO APPLY FOR A PARKING PERMIT

Permits are sold via a secure website. The web address is: www.parking.du.edu.

Step 1:

Review the information needed to select and purchase a permit, including prices, which is under the "Permits" tab. Restricted parking permits are sold on a first-come, first-served basis until sold out. General and Night/Weekend permits can be purchased at anytime throughout the school year. All permits are sold online at www.parking.du.edu. Motorcycle permits are the only permits sold in person at the Parking Office.

Step 2:

Select the "Purchase Permits" tab located on the top right side of the Permit Information page. You will be directed to an Account Login screen.

Step 3:

Enter your DU ID number and password. Your password is the same password used to access webCentral.

TIMELINE FOR STUDENTS TO PURCHASE FOR A PARKING PERMIT

Student Population	Sales begin	Student Billing Deadline	Restricted Permit Deadline
Commuter Students	April 25, 2011	August 7, 2011 (credit cards payments only after deadline)	First-come, First-served until sold out
Resident Students*	July 18, 2011	August 7, 2011 (credit card payments only after deadline)	First-come, First-served until sold out

* Resident students can only purchase a permit after they have received confirmation of their room assignments.

Students who missed the deadlines for Restricted (gated) lots may still purchase other types of permits (General and Night/Weekends) on our web page at any time. When a lot's permit allocation is reached you may purchase your second choice and put your name on the waitlist for your first choice. We will make periodic waitlist offerings as space becomes available in order to optimize the utilization of a lot. The only way to purchase any parking permit is online at www.parking.du.edu. **Don't delay, purchase on-line now!**

campus safety & parking services

IMPORTANT

Due to the high demand for parking spaces at the University of Denver, parking lots must be monitored seven days a week, 24 hours a day, to ensure availability for permit holders. All vehicles parked in a Restricted or General parking lot must display a valid DU parking permit. Permits are not valid for specifically reserved spaces. Any vehicle not displaying a proper permit will be ticketed. Initial parking fines range from \$15 to \$100. Unpaid tickets will result in a hold on a student's registration and may result in vehicle immobilization or the car being towed. Unregistered vehicles are subject to the same rules and regulations as registered vehicles.

LOT INFORMATION

General lots – These lots are available on a first-come, first-served basis for individuals displaying a valid University parking permit. General lots are identified by yellow signage at the lot entrance and by a 100-series number. Restricted permits and General permits are valid in General lots at all times. A Night/Weekend Basic permit is valid from 4:00 p.m. to 6:00 a.m. Monday through Friday and all times on weekends in General lots. Several Restricted lots (including Lots F, H1, O, Q and W) become "General" lots from 4:00 p.m. to 6:00 a.m. Monday through Friday and all times on weekends. General permits and Night/Weekend permits are sold throughout the year on an unlimited basis by visiting our secure web page at www.parking.du.edu.

Restricted lots – These lots are gated and controlled by card access. A Restricted lot permit is valid only at one corresponding Restricted lot and any General lot. A University ID card is used to gain entry into these lots. Only a limited number of permits are sold for each of these lots. We control the amount of permits sold into these lots to help ensure that a parking space is available when a permit holder desires to park. We do our best to ensure there is always a place to park, however, at the highest demand times, it is not guaranteed. Overflow parking is directed to General parking lots.

health services

contact information:

HEALTH AND COUNSELING CENTER

Ritchie Center, 3rd Floor, North side
2240 E. Buchtel Blvd., Denver, CO 80208

phone: 303.871.2205
fax: 303.871.4242

website: www.du.edu/duhealth/

campus safety & parking services

Health and Counseling Center

THE HEALTH AND COUNSELING CENTER (HCC) IS HERE TO MEET YOUR HEALTH CARE NEEDS

The HCC is an outpatient, on-campus facility that provides a wide range of medical and mental health services. Physicians, physician assistants, nurse practitioners, psychologists, registered nurses and other professionals staff the center. All students enrolled for academic credit (full-time or part-time) may use the HCC. Students' spouses are also welcome to use HCC for general medical care. The HCC staff adheres to strict confidentiality requirements, so patients and clients can be assured of privacy.

MAKING APPOINTMENTS

We are conveniently located on campus and provide same day appointments for illness and injury. You can schedule your appointment online at www.du.edu/duhealth the morning of the day you would like to be seen. Services are available Monday through Friday between the hours of 8:00 a.m. and 5:00 p.m. (Tuesday from 9:00 a.m. to 5:00 p.m.).

BENEFITS OF USING THE HCC

Many prescription medications are available at discounted prices. Most laboratory tests can be obtained here. In addition, we offer in-house specialist services such as dermatology, nutrition, gynecology and psychiatry. We also coordinate other specialty referral services when needed.

THE HEALTH AND COUNSELING FEE (\$144 per quarter, \$216 per semester)

The Health and Counseling Fee primarily maintains the HCC. It is listed as a separate charge on the tuition bill each term when you enroll for at least 6 graded credit hours or more in a traditional university program. Students taking less than 6 graded credit hours will have to visit HCC and enroll in-person. Although graduate students may waive this fee by completing a waiver online at <http://myweb.du.edu> each term before the waiver deadline, we highly recommend you keep the fee because participating in the Health and Counseling Fee greatly reduces your out-of-pocket expenses when you are seen at the HCC.

THE DU STUDENT HEALTH INSURANCE PLAN (SHIP) (\$2,420 semi-annually in fall and spring)

The University recognizes that good health is essential for success in the academic community and DU requires that ALL students carry adequate health insurance coverage. The University sponsors a comprehensive, affordable health insurance plan for degree seeking students taking one or more hours of graded credit. Students enrolled in 6 graded credit hours or more in a traditional program will have the insurance premium assessed on the tuition bill each coverage period. Students taking less than 6 graded credit hours will have to visit HCC and enroll in-person. To waive the premium from the tuition bill, proof of adequate health insurance coverage must be submitted by completing a waiver online at <http://myweb.du.edu> before the waiver deadline. Students are responsible for verifying all charges on their tuition bills. Please visit our website or call HCC for specific information on the plan, enrollment and waiver processes, coverage periods and rates.

** Keeping both the Health and Counseling Fee and Student Health Insurance Plan is the best way to receive the most coverage and have little or no out-of-pocket costs to you at HCC. Participation in both of these programs simultaneously provides the best possible coverage for the costs of services.*

health services

HCC LOCATION

Third floor North in the Ritchie Sports and Wellness Center (use the North entrance off Buchtel Boulevard)

HEALTH AND MEDICAL SERVICES

- General medical care (sick and well), women's health care, injury care
- Referral as necessary for in-house specialist consultation (dermatology, gynecology, psychiatry, nutrition)
- Sports medicine
- Procedures, electrocardiograms, immunizations, allergy shots
- Laboratory tests, including confidential HIV testing
- Discounted prescription medications, including birth control
- After-hours on-call service
- Travel health advice/immunizations
- Outside referral services as needed

COUNSELING SERVICES

- Counseling and Psychotherapy (individual, couples, group) – “brief therapy” model for students
- Psychological testing (e.g., for learning disabilities and attention deficit disorder)
- Crisis intervention and emergency services (24 hours/day, 7 days/week)
- Psychiatric consultation (medications) when referred by HCC staff
- Consultation and outreach
- Health psychology and behavioral medicine
- Training and research

HEALTH PROMOTION AND EDUCATION

- University student specific health information and programs
- Presentations and workshops available for student organizations, residence halls, Greek life and university departments (including graduate departments) by request
- Peer Education Team for student-led health education and programming
- Various educational and fun events throughout the academic year

The HCC is open Monday through Friday from 8:00 a.m. to 5:00 p.m. (Tuesdays from 9:00 a.m. to 5:00 p.m.) year-round. Urgent (same-day crisis) appointments can be arranged by calling the front desk. Potential clients are encouraged to use the website at www.du.edu/duhealth/ to get more information regarding services, find out interest and expertise areas of the mental health staff members and access helpful links.

Contact information:

Phone: 303.871.2205.

Email: healthpromotion@hcc.du.edu

Website: www.du.edu/duhealth

For after-hours medical and mental health emergencies:

Call 303.871.2205 and follow the instructions

health services

DU IMMUNIZATION REQUIREMENTS

Colorado State Law and University of Denver policy require two doses of vaccine against measles, mumps and rubella (MMR). Both doses must have been received after 12 months of age and at least one month or more apart.

The University wants to protect its students and the campus community. These infections and their consequences can be devastating. Medical research has shown that two shots are needed to provide adequate protection.

Students born after December 31, 1956, who are enrolled in traditional University programs, both undergraduate and graduate, including law, must comply with this requirement. English Language Center students must also meet the requirement. The MMR vaccine is available at the Health and Counseling Center.

If proof of immunity is not provided to the HCC, you will not be allowed to register for classes. In the event of an outbreak of one of these viruses on campus, you will be withdrawn from classes by the Health Department until the outbreak is contained (this can take 6 to 8 weeks!). You will not be eligible for a tuition credit under these circumstances.

PROOF OF ADEQUATE IMMUNIZATION CAN BE SUBMITTED IN SEVERAL WAYS:

- The form provided by DU, completed with immunizations dated (month, day, year), and signed by your physician or the physician's representative (forms are available at www.du.edu/duhealth).
- A photocopy of your previous school immunization record signed by a school nurse
- A physician's immunization record with signature
- Proof of immunity through blood testing (a copy of the lab results must be included).

Please note that according to Colorado regulations, a history of having had measles, mumps or rubella disease is not acceptable proof of immunity, even if documented by a physician.

Mail your documentation to:

DU HEALTH AND COUNSELING CENTER
Attn: Immunizations
Ritchie Center, 3rd Floor North
2240 E. Buchtel Blvd., Denver, CO 80208

OTHER VACCINES TO CONSIDER

Although the following vaccines are not required by DU for registration, they will protect you against some serious diseases that are prevalent among University students.

Meningitis

Meningococcal meningitis is a contagious disease that is frequently fatal. Studies have demonstrated that students who live in communal environments such as residence halls or sorority/fraternity houses are the most likely to contract meningococcal disease. There is a vaccine available which provides protection.

health services

Influenza

Priority for administration of influenza vaccine is given to those persons at high risk of complications from contracting the “flu” (i.e. those with chronic cardiac and respiratory conditions and diabetes). However, anyone who is frequently in group settings such as classrooms and residence halls should consider obtaining the vaccine prior to flu season, when the vaccine is made available to the general population.

Hepatitis B

Hepatitis B is a virus carried in the blood and bodily fluids of an infected person. It can be transmitted sexually or through contact with blood and other bodily fluids. Long-lasting infection can cause liver failure, liver cancer and death. A series of three vaccines is protective.

Human Papillomavirus (HPV)

HPV is a virus that causes cervical cancer. The HPV vaccine is currently recommended for females ages 9 through 26 years. The series of three vaccines protects against 70% of HPV strains causing cervical cancer and 90% of strains causing genital warts.

These vaccines, along with all immunizations required for travel abroad, are available at the Health and Counseling Center.

health services

2011-2012 Student Health Insurance Plan

WHAT IS COVERED?

- Coverage periods begin each fall and spring term
- Students are covered locally, nationally and internationally by the plan
- \$1,000,000 Lifetime Aggregate Maximum per condition
- \$250 Annual Deductible per individual
- Maximum out of pocket of \$1,500 per plan year

Inpatient Hospital Benefits

- In-Network care: 80% of the Negotiated Charge
- Out-of-Network care: 60% of the Reasonable and Customary Charge

Outpatient Benefits

- Office Visits: \$20 Copay/Deductible
- In-Network care: 80% of the Negotiated Charge
- Out-of-Network care: 60% of the Reasonable and Customary Charge

Lab and X-Ray

- In-Network care: 80% of the Negotiated Charge
- Out-of-Network care: 60% of the Reasonable and Customary Charge
- Prescriptions drug Benefit: \$1,000 prescription maximum per Policy Year
- \$15 Copay for Generic Prescription Drugs
- \$30 Copay for Brand Name Prescription Drugs

**Care outside the US is covered at 80% of billed charges – great for study abroad students!*

Please note: The highlighted benefits included above are subject to plan deductible, policy limits and exclusions.

Eligible students who want to enroll but don't see the premium assessed on their tuition bill must complete and submit an enrollment form WITH premium payment to the Health and Counseling Center within the enrollment period. Enrollment forms may be obtained online at www.du.edu/duhealth or in person from the HCC.

ADDITIONAL PLAN HIGHLIGHTS

- Access to local and national Preferred Providers through United Healthcare
- Vision Discount Program
- Dental Discount Program
- Information Health Line
- Extensive Mental Health coverage
- Dependent coverage available
- Worldwide Travel Assistance Services

health services

Health Insurance Waiver Instructions

STUDENTS MUST WAIVE ONLINE

www.du.edu → webCentral → login → myWeb → Student & Financial Aid → Registration → Waive Health Insurance/Fee

Online Instructions:

The waiver is only available after a student registers for classes and may **only be processed online**. Please visit www.du.edu, click on “webCentral” and login using your student ID# and passcode. Then click on “myWeb.” Once you are in “myWeb” click on “Student & Financial Aid” then “Registration” and finally “Waive Health Insurance/Fee.”

Waiver Questions

All of the following questions must be completed **online**. Not waiving the SHIP by the deadline means you will be responsible for payment of the premium.

1.	Does your current health insurance plan have a maximum coverage limit of at least \$500,000 per illness or injury?	Y / N
2.	Does your current health insurance plan have a deductible amount or co-payment that you can afford to pay?	Y / N
3.	Does your current health insurance plan have adequate mental health coverage?	Y / N
4.	Will your current health insurance plan cover all the services you may need while you are in Denver, Colorado, anywhere in the US or abroad?	Y / N
5.	Will your current health insurance plan be effective Sept. 1 st 2009 until August 31 st 2010?	Y / N

Students will need the following information in order to waive. The waiver must be submitted by the student online.

Insurance policy holder name:

Insurance policy holder ID#:

Insurance policy group # ID:

Effective dates of insurance coverage:

Insurance company name:

Insurance company address:

(street)

(city, state, zip)

Insurance company telephone#:

For questions, please contact the Bursar's Office at 303.871.4944 • Email: hiwaiver@du.edu.

For additional details, including deadlines, please visit <http://www.du.edu/bursar/insurance.htm>. Please feel free to complete this form in advance and use it as reference when waiving online but do not send in this form.

THE WAIVER IS ONLY AVAILABLE ONLINE

Health Insurance Waiver Instructions

EXAMPLE (Students must waive online)

technology services

contact information:

UNIVERSITY TECHNOLOGY SERVICES

help center: 303.871.4700

website: www.du.edu/uts/helpdesk/

technology services

University Technology Services

Welcome to the University of Denver! University Technology Services (UTS) provides the infrastructure and information that connects DU communities. With service as our focus, we help DU faculty, staff and students get what they need.

DU ID/EMAIL ADDRESS

Your DU ID and passcode are issued anytime up to 250 days before the beginning of the quarter and sent via US Mail to your home address. The DU ID and passcode are used to access many resources, including webCentral, the DU portal, wireless networking, etc. If you have not received your DU ID and have deposited and/or registered for classes, please contact the Office of the Registrar at 303.871.4095. Employees should contact Human Resources at 303.871.7420. Please note that if you are both an employee and a student, you will only have one DU ID assigned.

EMAIL ADDRESS

You will also receive an @du.edu email address. You can use this address for the duration of your academic career at the University. However, you will need to have a preferred email account that this address will forward to as this is not an actual email account, but just a forwarding address.

PUBLIC PRINTERS

The University is pleased to offer students use of black/white laser printers and color printers in a number of locations on campus. A printing budget is allotted to students each quarter for use of these printers. If your print budget for a given quarter is exhausted, you have the option of depositing additional funds in a separate account to use for printing until your quarterly budget is recharged again. Please check <http://dunet.du.edu> for additional information.

GETTING TECHNOLOGY HELP

The University has a vast technology support network for the mobile laptop community.

University Technology Services Help Center: The Help Center will be temporarily located in the UTS Building July 2011 through December 2012 and offers telephone, email, online and walk-in computer support for all faculty, staff and students at DU. Walk in support is available Monday through Friday from 8:00 a.m. to 6:00 p.m. For more information about the Help Center, please visit www.du.edu/uts/helpdesk/.

Departmental Assistance: Many departments offer technical help in your specific field of study. You may find the link to your program's website at www.du.edu/grad.

NETWORK ACCESS

The University offers multiple types of networking, including wired, wireless, VPN and modems.

Wired Networking: There are over 36,000 wired Ethernet data ports across campus, including the library, the commons rooms, classrooms and every residence hall room (a port for every pillow). Approximately 85% are 1,000 Megabits per second (i.e., gigabit).

technology services

Wireless Networking: PioneerNet, our wireless network for all DU students, faculty and staff is PRIVATE and SECURED. Access to the network requires logging into the system using your DU ID and passcode. Your wireless network card needs to support WPA/WPA2 Enterprise (also called 802.1x) and one of the 802.11b/g/a/n standards. For a complete map of wireless coverage, please visit: <http://www.du.edu/maps/wifi>.

VPN (Virtual Private Network Appliance): Using your own Internet service, this appliance offers off-campus users the same access as being on campus. The VPN offers encryption and security and this type of off-campus access can be a requirement for some courses and applications. You can reach the VPN at <https://vpn-external.du.edu>.

COMPUTER LABS

The University has a number of computer labs on campus. Some of these are staffed, open to the entire student population and allow public printing, while others have restrictions. For a complete list of labs, services and hours, please visit <http://www.du.edu/uts/helpdesk/resources/labs.html>.

WEBCENTRAL

WebCentral is DU's portal. WebCentral provides secure, single sign-on access to most of DU's online services for students, faculty and staff. This one-stop portal presents a personalized view of webmail, personal calendars, grades, registration, account information, Blackboard courses, DU announcements and DU events. Your webCentral layout will change automatically in response to changes in your relationship to DU. WebCentral also includes customization options that allow you to add and remove content to suit your view of DU's online resources. To access webCentral, please visit <http://webcentral.du.edu>.

BLACKBOARD

Blackboard is the University's officially supported online course tool. Many of your courses may have a Blackboard component. Blackboard has many tools and each course will differ slightly depending on how the instructor chooses to use Blackboard. To access Blackboard, you will need an active DU ID and passcode. If your account is currently active and you know your passcode, please visit Blackboard through webCentral at <http://blackboard.du.edu>. Here you will find detailed instructions and support information for faculty and students.

DU PORTFOLIO

The DU Portfolio Community (DU PC) is an online portfolio where you can upload papers, vitas, photos, etc. Some courses require students to post assignments in the DU Portfolio, while others encourage collaborative projects. Most often, students use DU PC as a place to showcase their talents to future employers. The DU PC can be accessed through webCentral or directly at <http://portfolio.du.edu>.

MYWEB

MyWeb provides secure access to your personal information. Students can register for classes, check class schedules, check for grades, access unofficial transcripts, check account information and more. You must have your 9-digit DU ID that begins with the digits "87" and your passcode. If you have problems logging in or have forgotten your passcode, contact the UTS help desk at 303.871.4700 for assistance. MyWeb can be accessed through <http://webcentral.du.edu>.

technology services

LAPTOPS

If you are purchasing a new laptop and have questions regarding minimum requirements to access technology resources at the University, please visit <http://www.du.edu/uts/laptops>.

ACCEPTABLE USE POLICY

Computers connected to the campus network have direct access to the Internet. In order to protect the DU's status within the Internet and assure legitimate access to University computers, people using University computers and the campus network will be expected to abide by the rules posted on our Acceptable Use Policy page at: www.du.edu/uts/policies/duaup.html.

graduate student life

PIONEER ID CARD OFFICE

2050 E. Evans Ave., Denver, CO 80208
phone: 303.871.4545
website: www.du.edu/pioneeridcard
hours: M-TH 9:00 a.m. – 6:00 p.m.
F 10:00 a.m. – 3:00 p.m.

GENDER VIOLENCE EDUCATION AND SUPPORT SERVICES

103 Nelson Residence Hall
phone: 303.871.3853
e-mail: gves@du.edu
website: www.du.edu/studentlife/Sexual_Assault

DU RECREATION

Daniel L. Ritchie Center
2201 E. Asbury Ave., Denver, CO 80208
website: www.recreation.du.edu

DU BOOKSTORE

Driscoll Center South
phone: 303.871.3251
toll free: 800.289.3848
website: www.dubookstore.com
hours: M-TH 8:30 a.m. – 6:30 p.m.
F 8:30 a.m. – 5 p.m.
Sat. 10 a.m. – 3 p.m.

DISABILITY SERVICES PROGRAM

Ruffatto Hall
1999 E. Evans Ave., Denver, CO 80208
phone: 303.871.2278 / 7432
website: www.du.edu/disability/dsp
hours: M-F 8:30 a.m. – 4:30 p.m.

GRADUATE STUDENT ASSOCIATION COUNCIL (GSAC)

Office of Graduate Studies
Mary Reed Building, Room 5
2199 S. University Blvd., Denver, CO 80208
e-mail: gsac@du.edu
website: www.du.edu/gsac

CENTER FOR MULTICULTURAL EXCELLENCE

1981 S. University Blvd., Denver, CO 80208
(NW corner University and Asbury)
phone: 303.871.2942
e-mail: cmeinfo@du.edu
website: www.du.edu/cme

technology services

Pioneer ID Card

ID CARD ADVANTAGES

The Pioneer ID Card is a student's official identification while attending the University of Denver. All students are required to carry the ID card while on campus. The Pioneer Card allows students to access their residence hall, the Penrose Library, the Ritchie Center, the Law Library, parking lots and several academic buildings throughout campus. The Pioneer ID Card also functions as a debit card for the Meal Plan and the Flex debit account. The card allows students to purchase discounted tickets to DU entertainment and sporting events, such as hockey games and theater productions. Students assessed activity fees also receive an RTD College Pass, which allows for free transportation on all RTD services.

OBTAINING A PIONEER ID CARD

New for the 2011-2012 school year, students will be able to submit a digital photo for ID card creation, so that it will be ready for pick up at orientation. Deposited students will be contacted via email with details once the service becomes available.

Alternatively, students may visit the Pioneer ID Card Office during orientation, located in Driscoll University Center's South Wing on the lower level. All students must have paid their admissions deposit and be within 30 days of their accepted term to receive their ID card. They must also present a photo ID. There is no charge for the first ID card. Replacement IDs are \$20. If a card is damaged, it can be replaced for only \$5.

ACCOUNTS

The Pioneer ID Card offers a convenient debit account, as well as the Meal Plan accounts.

Flex Account: The Flex account is our flexible spending (debit) account. Flex funds can be spent at many on and off-campus locations. Please visit the Pioneer ID Card Office website for a complete listing: www.du.edu/pioneercard.

Meal Plan: The meal plan offers a meal account and a meal plan cash account. The meal account provides a set number of meals to be used in Centennial Halls and Nelson dining halls. The meal plan cash account can be used for purchasing food items from several locations around campus. Please contact the Department of Residence for information on meal plan options at 303.871.2246.

DEPOSITS

Deposits to a student's Flex account can be made online with a credit card (www.du.edu/pioneercard) or in person with cash or check. Funds deposited online will be available immediately. Deposits made in the Pioneer ID Card Office will be available for use the following morning. The minimum deposit required is \$1.00. Accounts inactive for over 12 months will be charged a \$5.00 monthly service charge. Cash deposits to a student's flex account can also be made at the Penrose Library by using the Value Transfer Station (VTS). These deposits are available for use immediately.

graduate student life

The Ritchie Center

You are more than the mind that brought you to DU. That's why everything in the Ritchie Center—the gymnasiums, ice arenas, fitness center, group fitness classes, intramural leagues and recreational clubs—is yours.

As a graduate student taking at least 8 credit hours of classes, every program DU Recreation offers is available to you either free of charge or at an exclusive, discounted rate. All because we know there's more to the measure of you than a grade point average. Step inside the Ritchie Center and you'll find one of the finest facilities of its kind in the country. Dedicated in April 2000, the 440,000 square-foot Ritchie Center is home to DU's 17 NCAA Division I teams, the award winning Coors Fitness Center and El Pomar Natatorium, and intramural and club sports activities for students, faculty, staff and alumni. It's also the venue for all Denver Pioneer NCAA athletic events throughout the year.

COORS FITNESS CENTER: www.recreation.du.edu

Before you even begin your first workout, you've already got an edge. As a full-time student, all the technology and know-how in the Coors Fitness Center are yours—almost always free of charge—any time you want.

Coors Fitness Center has more than 85 pieces of cardiovascular equipment, including Cybex strength training equipment, Free Motion resistance training equipment, free weights, racquetball and squash courts, cycling, Zumba, step, yoga, pilates and other fitness classes. Plus, you have access to tennis, swimming and ice skating facilities. We imagine you have a pretty good idea of what all of this can do for you—inside and out.

The Coors Fitness Center also offers Student +1 and Student Family memberships at a discounted rate. Call 303.871.4523 or stop by the Coors Fitness Center Front Desk for more information.

Available Fitness Classes (subject to change):

Cycling	Yoga	Extreme Lift	AB Blast
Zumba	Body Blitz	Core-Ruption	Pilates
Personal Training (Discounted Rates)			

EL POMAR NATATORIUM: www.recreation.du.edu/pool

As a DU student, you have access to Denver's only Olympic-sized swimming pool. Lap swimming is included as part of your Coors Fitness Center membership. There are also several other programs offered, such as Masters swimming and Learn-to-Swim programs. Student pricing varies for each program. Finally, join club kayaking and hone your skills in the pool. Check out our website for more specific information on each program.

graduate student life

INTRAMURAL SPORTS: www.recreation.du.edu/im

Find friendly competition and new friends through the DU's popular Intramural Sports Program. Registration is the first two weeks of each quarter and registration forms are available online or in the Coors Fitness Center.

Intramurals offered (subject to change on a quarter by quarter basis):

Pioneer Intramural Basketball	Broomball	Indoor Soccer
Flag Football	Ultimate Frisbee	Kickball
Dodgeball	Ice Hockey	Volleyball
Outdoor Soccer	Softball	

ALPINE CLUB: www.dualpineclub.org

The Alpine Club is one of the oldest student organizations on campus and a great complement to the DU experience. Past excursions include: riding Slick Rock and climbing on Wall Street in Moab, rafting the Royal Gorge, ice climbing at the Ouray Ice Park and skiing in Telluride. Getting involved in the Alpine Club is the way to truly enrich your DU experience! The University's Alpine Club makes outdoor adventure available to all students, faculty and staff, regardless of ability and/or previous experience.

CLUB SPORTS: www.recreation.du.edu/clubsports

Club sports are formed by people like you—students, faculty and staff—who meet on a regular basis to pursue a common interest in a specific sport. Structured or casual, incorporating competition and instruction, each club offers a unique way to learn a new sport, make new friends, keep fit and compete.

More than 800 students participate in the Club Sports program at DU, competing against other universities and clubs locally, regionally and nationally. You can also form your own club sport by going to our website for complete details.

Current Club Sports*:

Women's Basketball	Women's Hockey	Racquetball	Men's Soccer
Men's Basketball	Field Hockey	Rugby	Women's Soccer
Cycling	Tennis	Taekwondo	Ultimate Frisbee
Dance	Kayaking	Men's Baseball	Rock Climbing
Men's Lacrosse	Skiing	Curling	Water Polo
Figure Skating	Women's Lacrosse	Softball (Fastpitch)	Men's Hockey
Volleyball	Cross Country		

*New Club Sports are added all the time, be sure to check the website for the most up-to-date list.

EMPLOYMENT OPPORTUNITIES: www.dujobs.org Search: Athletics & Recreation

Hoping to pursue a career in business, health and fitness or just trying to pay a few bills? You can easily get a job almost anywhere that makes you wish you had a better one. But with the Ritchie Center so close at hand, why not start out with a job you'll love?

DU Recreation offers a variety of jobs and internships, working with customers of all ages in every facility and program inside the Ritchie Center. The money is good, but the work is better. Check out your opportunities online by visiting our website.

graduate student life

Disability Services Program (DSP)

The DSP provides reasonable accommodations as required by the Americans with Disabilities Act and Section 504 of the Rehabilitation Act to students with documented disabilities to afford them equal opportunity to participate in the University's programs, courses and activities. Disabilities protected under the laws include: physical disabilities, psychological disabilities, health-related disabilities, learning disabilities and Attention Deficit Hyperactivity Disorder (ADHD). Accommodations are arranged in an individualized, collaborative manner based on appropriate documentation of the disability. The DSP also provides intake and referral services for students who think they may have a learning disability or ADHD but have never been tested.

DEFINITION OF A DISABILITY

A disability is a condition that substantially limits a "major life activity" such as walking, hearing, seeing, speaking, breathing, learning, communicating and operations of major bodily functions.

INTAKE PROCESS

Prospective and admitted students, as well as current University of Denver students, may contact DSP to discuss possible accommodations and to review documentation. The DSP is located on the 4th floor of Ruffatto Hall at 1999 E. Evans Avenue (on the corner of High and Evans streets) and can be reached via telephone at 303.871.2278.

DOCUMENTATION

In order to be eligible for services, documentation of disability is required. This information is confidential and will not be part of a student's university record. Documentation guidelines for specific disabilities or medical conditions can be found on the DSP website: www.du.edu/disability/dsp.

ACCOMMODATIONS

Academic accommodations are arranged on an individualized, collaborative basis, so it is crucial that prospective and current students contact DSP as early as possible. Students who wish to receive accommodations must self-disclose their disability to DSP staff. Upon disclosure, students are required to complete an in-take packet and provide documentation of their disability.

graduate student life

Accommodations provided through DSP are free to qualifying students. Appropriate accommodations through DSP may include:

- Test accommodations
- Alternate format texts and materials
- Assistance with course substitutions, i.e., foreign language
- Classroom changes
- Adaptive furniture
- Liaison to university communities
- Note takers
- Sign language/oral interpreters
- Diagnostic referrals for LD/ADHD

REFERRAL SERVICES

If a student is experiencing academic difficulties and is concerned that s/he may have a learning disability, ADHD or a psychological disorder, referral services are available. Another service that may be available to qualifying students is the Learning Effectiveness Program (LEP), which is a fee-for-service program that works with students who have learning disabilities and/or ADHD. Additional information about LEP can be found on the website: www.du.edu/disability/lep.

graduate student life

Multicultural Excellence

The mission of the Center for Multicultural Excellence is to advance a culture of Inclusive Excellence at the University of Denver. This mission is carried out through a variety of programming and services for students, staff, faculty, administrators and alumni representing different social identity groups including gender identity, gender expression, race, ethnicity, religion, nationality, ability status, sexual orientation, age and other major social dimensions found on the DU campus.

All efforts of the Center for Multicultural Excellence are designed to create a welcoming and inclusive campus and to recruit, identify, develop, and utilize the talents, gifts and perspectives of every DU community member. Below are few of the specific opportunities and resources available for graduate students, beyond your invitation to participate in most any CME offered programs and services.

GRADUATE WORKSHOP SERIES TO PREPARE STUDENTS FOR A CAREER IN ACADEMIA

Every year, CME's Office of Multicultural Recruitment and Retention, the Office of Graduate Studies, The Office of Sponsorship and Research Programs and the Graduate Student Association Council offers this series that includes presentations by experts in the field addressing strategies for completing the dissertation, preparing a curriculum vitae and cover letter, negotiating faculty contracts, how to balance research, teaching, community service, understanding the tenure process, the importance and value of mentoring and networking, and navigating various employment obstacles and challenges. For more information contact Dr. Fernando Guzman at fguzman@du.edu.

BLACK GRADUATE STUDENT GROUP

By request, in 2010, CME staff, a Morgridge College of Education student, a Women's College staff person and a student from the Graduate School of Social Work started a Black graduate student group for the entire university. Currently, various graduate student groups exist for Black students within their colleges; and the goal of this group is to connect the Black graduate students across the university. For more information or to join the group's listserv please email (cmeinfo@du.edu).

FACILITATION OPPORTUNITIES

Graduate students can also be trained and gain experience in small group dialogue and/or educational workshop facilitation through regular programs such as the Voices of Discovery Dialogues (winter quarter) and Queer and Ally (Q&A) Training (ongoing).

Program and Policy Development and Implementation

Interested graduate students may be able to participate in ongoing efforts to develop/improve CME programs, and/or serve on committees and advisory board working to support, review and improve the campus climate for diversity.

graduate student life

Study/Meeting Facilities

Students are also welcome to access our facilities 24 hours a day, seven days a week. We provide basic computer access, study and small group meeting space, and a basic kitchenette. For more information please visit

www.du.edu/cme/building_policy.html

For more information on these and many other opportunities, call, click or come by Center for Multicultural Excellence:

1981 S. University Blvd. (NW corner University and Asbury)

phone: 303.871.2942

email: cmeinfo@du.edu

website: www.du.edu/cme

graduate student life

Gender Violence Education and Support Services

The mission of the Gender Violence Education and Support Services (GVESS) office is to educate the University of Denver campus community about gender violence related issues, including domestic violence, sexual assault and stalking. GVESS also provides support services to victims, survivors and secondary survivors of gender violence.

The philosophy behind the GVESS office states that everyone has the right to live without abuse, fear, and violence. GVESS recognizes that gender violence is a community problem and that women and men must work together to eradicate it from our society. The GVESS office believes that by providing educational resources, endorsing healthy relationships, promoting bystander interventions and advocating for victim and survivor rights, we can help change the societal conditions that cause gender violence.

As part of our mission to educate, GVESS oversees the Gender Violence Resource Center, which is located in Nelson Hall room #102. The center houses a collection of books, journal articles and videos about gender violence. These materials range from prevention strategies, causes of and self-help workbooks for victims and survivors. A lending process is in place for DU community members.

GVESS also works with people whose lives are affected by gender violence and the multifaceted problems they face. We assist victims and survivors, their friends and family by providing support during all stages of reporting and recovery. We understand that every victim and survivor responds to a traumatic experience in a different way. GVESS is committed to treating victims and survivors with dignity and respect and supports their autonomy in decisions when working toward self-identified goals. All of our counseling and referral services are confidential and free of charge. **Support services are provided in Nelson Hall room #103 or by calling 303.871.3853.**

GVESS oversees the DU Sexual Assault Survivor Advocate Network (The SASA Network), which assists DU students, staff, faculty and visitors who have been sexually assaulted. Victim Advocates are trained to provide emotional support and referral information for victims, survivors, and their friends and family. The SASA Network operates the 24/7 crisis line during the fall, winter and spring quarters. **To contact an advocate, please dial 303.871.3456.**

GVESS serves individuals who have had their lives impacted by gender violence in a culturally-competent, non-judgmental and empathic way. We serve women, men and transgender individuals of all racial, ethnic, religious, class backgrounds, sexual orientations and social identities.

graduate student life

DU Bookstore

The University of Denver (DU) Bookstore is university-owned and operated. This full-service store provides items for students and their families, faculty, staff, alumni and campus visitors. Along with required and recommended textbooks and course materials, the DU Bookstore offers a large selection of DU clothing and gift items, official DU logo apparel, general books, school and residential hall room supplies, electronics, snacks and convenience items. The bookstore's computer department offers educationally priced laptops and software to University students with a valid DU ID card. All computers and laptops are configured to meet University of Denver laptop requirements.

The DU Bookstore offers a wide variety of special services, which includes the ability to order course materials online with an option for in-store pick up. Clothing, gifts, supplies and computer goods can also be purchased by phone or at www.dubookstore.com. Textbooks and merchandise can be placed on hold, special orders can be placed for general books and supplies not in stock, and the bookstore is open for extended hours during the first week of each quarter. The bookstore also has a daily textbook buyback program. Special buyback periods are also held at the end of each quarter, which allow students the opportunity to receive more money for their unneeded textbooks. Textbooks with "no value" can be donated to charity.

The DU Bookstore has begun an innovative textbook rental program designed to lower the cost of textbooks for students while also providing students with a choice between renting or purchasing new or used textbooks. The bookstore has made hundreds of their most popular textbook titles available for rental to students. This rental program offers students an economical choice for textbooks, as students save up to 50% off the cost of a new book. Call the DU Bookstore, visit www.dubookstore.com or stop by in-person to find out more about textbook rentals.

Regular store hours are Monday through Thursday from 8:30 a.m. to 6:30 p.m., Fridays from 8:30 a.m. to 5:00 p.m., and Saturdays from 10:00 a.m. to 3:00 p.m. You can reach the DU Bookstore at 303.871.3251 or 1.800.289.3848 for inquiries outside the metro Denver area. Purchases at the DU Bookstore can be made by cash, check, Visa, MasterCard, Discover, American Express, Flex or Bookstore accounts. Flex and Bookstore accounts are set up through the DU ID office at 303.871.4545.

All proceeds generated by the bookstore benefit the DU community. The DU Bookstore is committed to a sustainable future and features products and services that support responsible environmental stewardship. Flexible student employee positions are also available to interested students. Online ordering, textbook information, sales events and additional store information are always available at www.dubookstore.com. DU students can also participate in the bookstore's free "Pioneer Perks" membership program where special sales, events and promotions are offered via email invitations. Student sign-up for Pioneer Perks is available online at www.dubookstore.com.

graduate student life

DU BOOKSTORE

COMPUTER CENTER

AFFORDABLE TOOLS FOR GRADUATE SUCCESS!

Adobe Software up to

80%

Off Full Retail Price!

Academic Pricing

Student Microsoft Office
for Mac - \$75.00
for Windows - \$99.00

MacBook AppleCare - \$183.00
iWorks - \$39.00
iLife - \$39.00

and much more!

Shipping out-of-state?
It's tax-free!

Contact:
Donovan Dowling
303.871.2673
1.800.289.3848 (Toll Free)
dodowlin@du.edu

www.dubookstore.com

HOT DEAL!



MacBooks Starting at \$899.00

All-in-One HP

Printer is FREE WITH ANY NEW MAC and APPLECARE



Buying from your DU Bookstore Computer Center

Advantages

Competitive Pricing
Save up to 80% on Student Software
Free Antivirus & Spyware
Laptop & Data Care Products
Partnered with UTS Help Desk
Apple Products - Don't See It? We'll Get it!
Quality Brands and Models
Meets & Exceeds DU Requirements
Convenient Campus Location
Recommended Department Bundles
Parallels Brings Windows on Board Macs

Available Brands



Authorized Campus Store

graduate student life

Graduate Student Association Council

The Graduate Student Association Council (GSAC) is your representative graduate student association (GSA) at the University of Denver. Comprised of members from each graduate unit's respective student associations, GSAC plays a unique role as the lead advocate for the interests of DU's entire graduate student community. The GSAC's mission is to foster a sense of community among graduate students and to represent that community and its interests before DU's administration.

GSAC HIGHLIGHTS 2010-2011 ACADEMIC YEAR

FALL QUARTER 2010

- GSAC organized an orientation resource fair aimed at recruiting new graduate students connected with campus services and programs. There were approximately 250 graduate students in attendance.
- GSAC organized the third annual 'Grad Games,' bringing graduate students from various programs of study together for some friendly competition with approximately 75 participants.
- GSAC, along with the Office of Graduate Studies, helped to draft the policies and guidelines for a new \$25,000 Graduate Student Professional Development Fund pushed forth by the 2009-2010 GSAC members.

WINTER QUARTER 2011

- GSAC sponsored Grad Night at a DU Men's Basketball game, connecting students from various programs through common interest for a fun experience.
- GSAC, along with the Undergraduate Student Government and the Student Bar Association (SBA), helped the Inclusive Excellence Advisory Board organize open forums for DU students to provide their input on the new Inclusive Excellence Strategic Plan.
- GSAC worked with the Center for Multicultural Excellence to bring graduate workshops back to DU. The workshop topics included, "how to make the most of a conference" and "how to become a faculty member."
- GSAC donated \$500 towards the University of Denver's 10th Annual Diversity Summit on Inclusive Excellence.

SPRING QUARTER 2011

- GSAC and the SBA, in an effort to create closer ties to administration, attended a dinner with the Chancellor and other university administrators.
- GSAC created a friendly competition amongst all graduate programs to help raise money for the March of Dimes.
- GSAC will work with the Center for Multicultural Excellence to offer additional graduate workshops.
- Over the course of the year, GSAC provided conference and research funding to graduate students through the \$25,000 Graduate Student Professional Development Grant, helping them with expenses incurred while going to professional conferences and conducting research.

For more information and to learn how to join the Graduate Student Association Council, visit <http://www.du.edu/gsac/> or contact us by email at gsac@du.edu.

denver resource guide

Denver and Colorado Business Information

www.denver.citysearch.com

BANKS (NEAR CAMPUS)

1st Bank

1316 E. Evans Ave.
Denver, CO 80210
303.778.8300

Bank of the West

2050 S. Downing St.
Denver, CO 80210
303.202.5521

Chase

2040 S. University Blvd.
Denver, CO 80210
720.570.0751

DU Community Credit Union

(Public Service Credit Union)
2027 S. University Blvd.
Denver, CO
303.691.2345

Key Bank

2305 S. Colorado Blvd.
Denver, CO 80222
303.753.1779

Wells Fargo ATM

DU Ritchie Center
Open 24 hours

Wells Fargo Bank

2150 S. Downing St.
Denver, CO 80210
303.733.3560

POST OFFICE/PACKAGING

Englewood Post Office

3330 S. Broadway
Englewood, CO 80113
800.275.8777

FedEx Print Center (Kinko's)

1440 S. Colorado Blvd.
Denver, CO 80222
303.757.1122

*FedEx Self-Service Locations
available around DU campus

PakMail

2075 S. University Blvd., #D
Denver, CO 80210
303.744.6245

South Denver Post Office

2080 S. Holly St.
Denver, CO 80222
303.639.9867

US Post Office (near campus)

3800 Buchtel Blvd.
Denver, CO 80210
303.504.4721

UPS Store

1685 S. Colorado Blvd., Unit S
Denver, CO 80222
303.753.0888

UTILITIES

Comcast (Cable)

www.comcast.com
Customer Service: 303.930.2000

Qwest

www.qwest.com
Customer Service: 800.244.1111
Repair: 800.573.1311

XCEL Energy

www.xcelenergy.com
Customer Service: 800.895.4999
Gas Emergency: 800.895.2999
Outage: 800.895.1999

denver resource guide

COUNTY MOTOR VEHICLE OFFICES

Arapahoe County

5334 S. Prince St.
Littleton, CO 80120
303.795.4500

Denver County

3698 W. 44th Ave.
Denver, CO 80211
720.865.4600

DRIVER'S LICENSE OFFICES

1865 W. Mississippi Ave. #C
Denver, CO
303.937.9507

14391 E. 4th St.
Aurora, CO 80111
303.344.8400

311 E. County Line Rd.
Littleton, CO 80216
303.795.5954

HEALTH CLINICS AND HOSPITALS

Denver VA Medical Center

1055 Clermont St.
Denver, CO 80220
303.399.8020

www.denver.va.gov

DU Health + Counseling Center

Ritchie Center, 3rd Floor North
Buchtel Blvd facing I-25
303.871.2205

www.du.edu/duhealth

Rose Medical Center

4567 E. 9th Ave.
Denver, CO 80220
303.320.2121

www.rosemed.com

Denver Health Medical Center

777 Bannock St.
Denver, CO 80204
303.436.6000

www.denverhealth.org

Porter Adventist Hospital

2525 S. Downing St.
Denver, CO 80210
303.778.1955

www.porterhospital.org

University Hospital

4200 E. 9th Ave.
Denver, CO 80262
720.848.0000

www.uch.edu

TRANSPORTATION

Denver Public Transportation

RTD

For fares and routes:

www.rtd-denver.com

303.299.6000 or 800.366.7433

Light Rail-- Denver area

SkyRide--to airport

Taxi

Freedom Cab

303.444.4444

Metro Taxi

303.333.3333

Yellow Cab

303.777.7777

Airport Parking

Pikes Peak Lot (cheapest)

24300 E. 75th Ave.

Denver, CO 80249

www.flydenver.com/park/

Airport Shuttles

Super Shuttle Denver

1.800.525.3177

www.supershuttledenver.com

denver resource guide

SHOPPING MALLS

Cherry Creek

3000 E. 1st Ave.
Denver, CO 80206
303.388.3900

www.shopcherrycreek.com

Denver Pavilions

500 16th St.
Denver, CO 80202
303.260.6000

www.denverpavilions.com

Park Meadows

8401 Park Meadows Center Dr.
Lone Tree, CO 80124
303.792.2999

www.parkmeadows.com

Colorado Mills

14500 W. Colfax Ave.
Lakewood, CO 80401
303.590.1634

www.coloradomills.com

Flatiron Crossing

1 W. Flatiron Cir.
Broomfield, CO 80021
720.887.7467

www.flatironcrossing.com

Southwest Plaza

8501 W. Bowles Ave.
Littleton, CO 80123
303.973.5300

www.southwestplaza.com

GROCERIES

Albertson's - Savon Pharmacy

323 S. Broadway
Denver, CO 80209
303.744.8660

King Soopers

2750 S. Colorado Blvd.
Denver, CO 80222
303.512.0122

Safeway

2150 S. Downing St.
Denver, CO 80012
303.722.6117

SPECIALTY GROCERIES

Bombay Bazaar

3140 S. Parker Rd.
Aurora, CO 80014
303.369.1010

Far East Oriental Supermarket

333 S. Federal Blvd.
Denver, CO 80238
303.742.8635

Mi Pueblo Latin Market

15585 E. Colfax Ave.
Aurora, CO 80111
303.361.6123

Colorado Halal Market

10200 E. Mississippi Ave.
Denver, CO 80012
303.751.6661

Kantamanto African Market

495 Havana St.
Aurora, CO 80010
303.360.7200

Middle East Market

2254 S. Colorado Blvd.
Denver, CO 80222
303.756.4580

Far East Center

Southwest Corner of Alameda
and Federal Blvd, Denver

Marhaba International Market

6879 Leetsdale Dr.
Denver, CO 80224
303.333.7653

The Natural Grocers

2033 S. Colorado Blvd.
Denver, CO 80222
303.733.6201

International Market

2020 S. Parker Rd.
Denver, CO 80231
303.695.1090

Maruti Gourmet Coffee

12200 E. Cornell Ave.
Aurora, CO 80014
303.745.4511

Whole Foods Market

870 S. Colorado Blvd.
Glendale, CO 80246
303.691.0101

denver resource guide

RESTAURANTS (near campus)

Black Jack Pizza

2075 S. University Blvd.
Denver, CO 80210
303.722.5222

Bruegger's Bagels

2000 S. University Blvd.
Denver, CO 80209
303.777.7600

Chipotle

1644 E. Evans Ave.
Denver, CO 80210
303.722.4121

Crimson & Gold Tavern

2017 S. University Blvd.
Denver, CO 80210
720.379.5454

Damascus (Greek)

2276 S. Colorado Blvd.
Denver, CO 80222
303.757.3515

Deli Zone

2439 S. University Blvd.
Denver, CO 80210
303.927.6304

Einstein's Bagels

1213 E. Evans Ave.
Denver, CO 80210
303.722.9300

Garbanzo Mediterranean Grill

2045 S. University Blvd.
Denver, CO 80210
303.715.4444

Hong Kong Café

2401 S. University Blvd.
Denver, CO 80210
303.733.8250

Illegal Pete's

1736 E. Evans Ave.
Denver, CO 80210
303.733.3035

Isle of Singapore

2022 S. University Blvd.
Denver, CO 80210
303.777.8388

Jason's Thai

2022 S. University Blvd
Denver, CO 80210
303.777.8388

Jerusalem's

1890 E. Evans Ave.
Denver, CO 80210
303.777.8828

Jimmy Johns

2075 S. University Blvd.
Denver, CO 80210
303.282.7300

Jordan's Pub & Bistro

2363 E. Evans Ave.
Denver, CO 80210
303.733.3936

Mustard's Last Stand

2081 S. University Blvd.
Denver, CO 80210
303.722.7936

Noodles

1737 E. Evans Ave.
Denver, CO 80210
303.722.1912

Papa John's

1505 E. Evans Ave.
Denver, CO 80210
303.778.6262

Pei Wei

3970 Buchtel Blvd.
Denver, CO 80210
303.942.3445

Pete's University Park Café

2345 E. Evans Ave.
Denver, CO 80210
303.733.7376

The Pioneer

2401 S. University Blvd.
Denver, CO 80210
720.536.4802

Pita Jungle

2017 S. University Blvd.
Denver, CO 80210
720.570.1900

Saucy Noodle Ristorante

727 S. University Blvd.
Denver, CO 80209
303.733.6977

Seven 30 South

730 S. University Blvd.
Denver, CO 80209
303.744.1888

Sidelines Pub @ DU

Driscoll Center North
Denver, CO 80210
303.871.4180

Spanky's

1800 E. Evans Ave.
Denver, CO 80210
303.733.6886

denver resource guide

RESTAURANTS (near campus)

Spicy Pickle

2043 S. University Blvd.
Denver, CO 80210
303.733.2994

Subway

2008 S. University Blvd.
Denver, CO 80210
303.744.2944

Tokyo Bowl

2337 E. Evans Ave.
Denver, CO 80210
720.570.0720

Tokyo Joe's

1700 E. Evans Ave.
Denver, CO 80210
303.722.7666

Zingers

2075 S. University Blvd.
Denver, CO 80210
303.733.3573

COFFEE (near campus)

Kaladi Brothers Coffee

1730 E. Evans Ave.
Denver, CO 80210
720.570.2166

Starbucks

2000 S. University Blvd.
Denver, CO 80210
303.733.9377

Starbucks

1605 E. Evans Ave.
Denver, CO 80210
303.722.2901

Stella's Coffee House

1476 S. Pearl St.
Denver, CO 80210
303.777.1031

University Groundz

2423 S. University Blvd.
Denver, CO 80210
303.287.1372

GREATER DENVER DINING/ENTERTAINMENT

1515 Restaurant

1515 Market St.
Denver, CO 80202
303.571.0011

Aix (French)

719 E. 17th Ave.
Denver, CO 80203
303.831.1296

Axum (Ethiopian)

5501 E Colfax Ave.
Denver, CO 80220
303.32.6139

BeauJo's Colorado Style Pizza

2710 S. Colorado Blvd.
Denver, CO 80222
303.758.1519

Benny's Cantina

301 E 7th Ave.
Denver, CO 80203
303.894.0788

Blue Bonnet Café and Lounge

457 S. Broadway
Denver, CO 80209
303.778.0147

Bombay Clay Oven

165 Steele St.
Denver, CO 80206
303.377.4454

Brother's BBQ 2

568 N Washington St.
Denver, CO 80203
720.570.4227

Cafe Berlin

323 14th St.
Denver, CO 80202
303.377.5896

denver resource guide

GREATER DENVER DINING/ENTERTAINMENT

Café Brazil

4408 Lowell Blvd.
Denver, CO 80211
303.480.1877

Campo de Fiori

300 Filmore St.
Denver, CO 80206
Denver, 303.377.7887

Carmine's on Penn

92 S. Pennsylvania St.
Denver, CO 80209
303.777.6443

Cherry Cricket

2641 E. 2nd Ave.
Denver, CO 80206
303.322.7666

The Church (nightclub)

1160 Lincoln Ave.
Denver, CO 80203
303.832.3528

The Cork House

4900 E. Colfax Ave.
Denver, CO 80220
303.355.4489

Domo Restaurant

1365 Osage St.
Denver, CO 80204
303.595.3666

Dumitri's

1911 S. Havana St.
Aurora, CO 80014
303.752.0553

Ethiopian Restaurant

2816 E Colfax Ave.
Denver, CO 80206
303.322.5939

Fado Irish Pub

1735 19th St.
Denver, CO 80202
303.297.0066

Hapa Sushi Grill & Sake Bar

2780 East 2nd Ave.
Denver, CO 80206
303.32.-9554

Impulse Theater

1634 18th St.
Denver, CO 80202
303.297.2111

India Oven

2890 S Colorado Blvd.
Denver, CO 80222
303.756.5866

Jack -N- Grill

2524 N. Federal Blvd.
Denver, CO 80211
303.964.9544

Japon

1028 S Gaylord St.
Denver, CO 80209
303.747.0330

Jewel of India

10343 N Federal Blvd., Unit B
Westminister, CO 80260
303.469.7779

La Fondue

1040 15th St.
Denver, CO 80202
303.534.0404

Le Central

112 E. 8th Ave.
Denver, CO 80203
303.863.8094

Mataam Fez Moroccan

4609 E Colfax Ave.
Denver, CO 80220
303.399.9282

Mel's Bar and Grill

5970 S. Holly St.
Greenwood Village, CO 80110
303.777.8223

New Saigon

630 S Federal Blvd.
Denver, CO 80219
303.936.4954

Old Spaghetti Factory

1215 18th St.
Denver, CO 80202
303.295.1864

Panzano

909 17th St. (at Champa)
Denver, CO 80202
303.296.3525

Pete's Kitchen

1962 E. Colfax Ave.
Denver, CO 80206
303.321.3139

Rise Nightclub

103 Franklin St.
Denver, CO 80218
Denver, 303.383.1909

Snooze (Cherry Creek)

700 N. Colorado Blvd.
Denver, CO 80206
303.736.6200

Stadium Inn (pub)

1703 E. Evans Ave.
Denver, CO 80210
303.733.4031

denver resource guide

GREATER DENVER DINING/ENTERTAINMENT

Sushi Den

1487 S Pearl St.
Denver, CO 80210
303.777.0826

Sushi Tazu

300 Filmore St.
Denver, CO 80206
303.320.1672

Swing Thai

845 Coloardo Blvd.
Denver, CO 80206
303.333.0444

Tamayo

1400 Larimer St.
Denver, CO 80202
720.946.1433

Thai Basil

540 East Alameda Ave.
Denver, CO 80206
303.715.1188

Tommy's Thai

3410 E. Colfax Ave.
Denver, CO 80206
303.377.4244

Two-Fisted Mario's Pizza

1626 Market St.
Denver, CO 80202
303.623.3523

Venice Restaurant & Wine Bar

1700 Wynkoop St.
Denver, CO 80202
303.534.2222

Wahoo's Fish Taco

1233 S. Colorado Blvd., #A
Denver, CO 80246
720.974.7470

Wazee Supper Club (pizza)

1600 15th St.
Denver, CO 80202
303.623.9518

HOTELS

The Burnsley Suite Hotel

1000 Grant St.
Denver, CO 80203
303.830.1000

Courtyard by Marriott

1475 S Colorado Blvd.
Denver, CO 80222
303.757.8797

The Curtis

1405 Curtis St.
Denver, CO 80202
303.571.0300

Denver Sheraton Four Points SE

6363 E. Hampden Ave.
Denver, CO 80222
303.758.7000

Embassy Suites

7525 E. Hampden Ave.
Denver, CO 80231
303.696.6644

Fairfield Inn by Marriott

1680 S Colorado Blvd.
Denver, CO 80222
303.691.2223

Four Points Sheraton

600 S Colorado Blvd.
Denver, CO 80246
303.757.3341

Hampton Inn and Suites

4150 E. Kentucky Ave.
Denver, CO 80246
303.692.1800

Holiday Inn Select

455 S. Colorado Blvd.
Denver, CO 80246
877.863.4780

Hyatt Regency- Tech Center

7800 E. Tufts Ave.
Denver, CO 80237
303.779.1234

Loews Denver Hotel

4150 E Mississippi Ave.
Denver, CO 80246
303.782.9300

Marriott Denver City Center

1701 California St.
Denver, CO 80202
303.297.1300

denver resource guide

MOVIES

Elvis Cinemas

Tiffany Plaza Movies 6

7400 East Hampden Ave.
Denver, CO 80231
303.948.5555 (\$3 movies)

Landmark Esquire

590 Downing St.
Denver, CO 80218
303.733.5757

Landmark Mayan

110 Broadway
Denver, CO 80203
303.352.1992

Regal Continental 10

3635 S. Monaco Pkwy.
Denver, CO 80237
303.758.2345

University Hills Cinema

4150 E Amherst Ave.
Denver, CO 80222
303.757.7161

United Artists Colorado Center

2000 S. Colorado Blvd.
Denver, CO 80222
303.757.3700

RECREATION

16th Street Mall

Located in downtown Denver, the 16th Street Mall is home to many shops and entertainment venues.

The Butterfly Pavilion

6252 West 104th Ave.
Westminister, CO 80020
303.469.5441

www.butterflies.org

A nature preserve dedicated to foster appreciation of butterflies

Colorado State Capital

Broadway & Colfax Ave.
Denver, CO 80203
303.866.2604

Coors Brewery

12th St. & Ford
Golden, CO 80401
303.277.2337

www.coors.com

Denver Botanic Gardens

1005 York St.
Denver, CO 80206
720.865.3500

www.botanicgardens.org

Downtown Aquarium

700 Water St.
Denver, CO 80211
303.561.4450

www.aquariumrestaurants.com

Garden of the Gods

1805 North 30th St.
Colorado Springs, CO 80904
719.634.6666

www.gardenofgods.com

Beautiful nature preserve that is free to visitors.

Red Rocks Amphitheater

18300 West Alameda Pkwy.
Morrison, CO 80465

www.redrocksonline.com

Natural amphitheater offering open-air concerts and other events.

Six Flags/Elitch Gardens

2000 Elitch Cir.
Denver, CO 80204
303.595.4386

www.sixflags.com

SKIING INFORMATION

Vail, Keystone, Breckenridge, and Arapahoe Basin

www.snow.com

Copper Mountain

www.coppercolorado.com

Rocky Mountain Ski Resorts

www.coloradoski.com

For Additional Information on Denver Activities and Attractions, please go to: www.denver.citysearch.com