

Instructions for remote access to the GIS Lab network

This document contains instructions for:

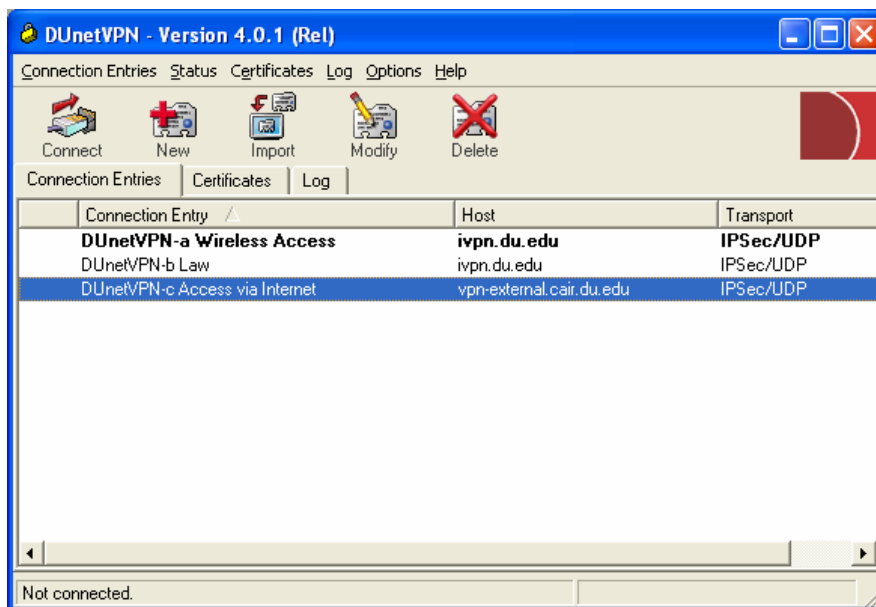
1. DU VPN client installation
2. Remote Desktop Connection installation
3. Terminal Services login

1. DU VPN

The first step is installation of the DU VPN client. Navigate to <http://ivpnweb.cair.du.edu/> and select the correct client for your operating system from the links at the bottom of the page. You will need to supply your Banner ID and PIN to complete the download. Once the installation program has finished downloading, begin the installation process by double-clicking the program icon.

(Note: on some Windows 2000 systems, you may need to upgrade the InstallShield engine for the installation to succeed. A patch for the InstallShield engine is available at <http://support.installshield.com/kb/view.asp?articleid=Q105097>)

Test the installation by selecting **Start | Programs | DUnetVPN | DUNetVPN**.



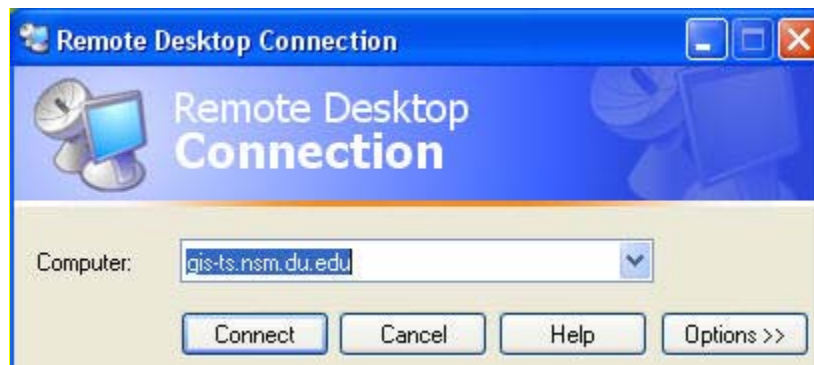
Highlight the “DUnetVPN Access via Internet” option and click on the ‘Connect’ button. You will be prompted for your Banner ID and PIN number when a connection to the DU VPN is established.

2. Remote Desktop Connection Installation

In order to connect to a Windows 2003 Server via Terminal Services, you will need to use the most recent Remote Desktop client from Microsoft. This client is installed by default in Windows XP Home and Professional editions. For Windows 2000 and earlier operating systems, the client is available for download at <http://www.microsoft.com/windowsxp/pro/downloads/rdclientdl.asp>

(For a more detailed explanation of Remote Desktop client installation and usage see: <http://www.microsoft.com/windowsxp/pro/using/howto/gomobile/remotedesktop/default.asp>)

The client can be opened from **Start | Accessories | Communications | Remote Desktop Connection**, or by typing 'mstsc' at the 'Run' prompt.



3. Terminal Services Login

To establish a remote desktop connection, start the VPN client and connect to the DU VPN as outlined above. Open the Remote Desktop client, and enter 'gis-ts.nsm.du.edu' in the 'Computer' text box. Click 'Connect'. Within a few seconds, you should be presented with a Windows 2003 server login prompt. Enter your usual Geography login information. Current applications include ArcGIS with all available extensions, and ArcInfo Workstation. The ArcGIS applications are available at **Start | Programs | ArcGIS**. All typical ArcGIS operations should work as usual in the Terminal Services environment.

Note: There is currently no time limit for active user sessions. **However, sessions that are inactive (no mouse or keyboard activity) for more than 30 minutes will be disconnected and open applications will be closed with loss of unsaved work.** If you are inadvertently disconnected due to network errors, your current session will be preserved for 30 minutes, and you may reconnect and continue with no interruption. **If more than 30 minutes has elapsed after disconnection, all open applications will be closed and the session terminated with loss of unsaved work. Save early, save often.**