

MEMO

Date: December 16, 2011
To: University of Denver Administrators
From: Christopher Pena (303-871-2808, christopher.pena@du.edu)
Subject: Fall 2011 First-Time, First-Year Cohort Report - Updated

Please find attached the report on Fall 2011 first-time, first-year (FTFY), degree-seeking students as of the week three census date, with updated financial need levels. This report excludes students in The Women's College and University College.

- **Cohort Size:** The Fall 2011 FTFY cohort is composed of 1,243 students, an increase of 0.98% over the Fall 2010 FTFY cohort of 1,231 students.
- **Admission Ratings:** The average admission rating of the Fall 2011 FTFY cohort is 4.9, 3.92% better than the average rating of 5.1 of the Fall 2010 FTFY cohort (on a scale of 1 to 9, with 1 being the highest). The distribution of admission ratings is not statistically significantly different than the Fall 2010 FTFY cohort ($p \leq .05$).
- **Geographic Origin:** 36.44% of students in the Fall 2011 FTFY cohort are from Colorado, which is statistically significantly lower than 41.19% of the Fall 2010 FTFY cohort ($p \leq .05$).
- **On-Campus Housing:** 94.53% of students in the Fall 2011 FTFY cohort are living on-campus, which is statistically significantly higher than 92.93% of the Fall 2010 FTFY cohort ($p \leq .05$).
- **Inclusiveness:** 15.37% of students in the Fall 2011 FTFY cohort self-identified as domestic minorities, which is statistically lower than 18.68% of the Fall 2010 FTFY cohort ($p \leq .05$). The distribution of students in specific race and ethnicity categories is not statistically significantly different than the Fall 2010 FTFY cohort ($p \leq .05$).
- **Student Involvement:** 15.69% of students in the Fall 2011 FTFY cohort are participants in a Living and Learning Community, 6.84% are athletes, and 7.16% are in the Honors program. None of these percentages are statistically significantly different than the Fall 2010 FTFY cohort ($p \leq .05$).
- **Financial Aid:** 23.01% of students in the Fall 2011 FTFY cohort have no unmet need, which is statistically significantly higher than 17.87% of the Fall 2010 FTFY cohort. However, the percentage of students with an admission rating of 1 or 2 who have no unmet need is not statistically significantly different than the Fall 2010 FTFY cohort ($p \leq .05$).

If you would like any additional information about the Fall 2011 FTFY cohort, please let me know.

Week Three Cohort Report

Summary of First-Time, First-Year Cohorts

	Fall 2007	Fall 2008	Fall 2009	Fall 2010	Fall 2011
Cohort size	1,140	1,145	1,210	1,231	1,243

Applications					
Completed applications	5,072	7,144	8,411	9,337	10,504
Accepted applications	3,755	4,600	5,935	6,683	7,160
Applications Total					
Acceptance rate	74.03%	64.39%	70.56%	71.58%	68.17%

Enrollment Yield					
Yield rate	30.36%	24.89%	20.39%	18.42%	17.36%

Enrollment					
Average registered hours	16.1	16.1	16.1	16.1	16.1
Average transfer hours	7.5	8	8.1	9.4	8.9

Class Level					
One (0 - 44 credits)	1,100	1,110	1,177	1,177	1,197
Two (45 - 89 credits)	40	32	32	48	44
Three (90 - 134 credits)	0	3	1	6	2
Four (135+ credits)	0	0	0	0	0

Living On Campus					
Enrolled	1,072	1,061	1,141	1,144	1,175
Percent of cohort	94.04%	92.66%	94.3%	92.93%	94.53%

* Indicates a statistically significantly different value than the previous year at $p \leq .05$.

Week Three Cohort Report

Admission Scores of First-Time, First-Year Cohorts

	Fall 2007	Fall 2008	Fall 2009	Fall 2010	Fall 2011
Cohort size	1,140	1,145	1,210	1,231	1,243

SAT Critical Reading (Verbal) Score					
Mean	584	589	591	596	603
25th percentile	530	540	540	540	550
75th percentile	640	640	640	650	660

SAT Math Score					
Mean	591	604	600	610	616
25th percentile	540	650	550	560	560
75th percentile	640	660	650	660	670

SAT Writing					
Mean	-	-	-	581	586
25th percentile	-	-	-	530	535
75th percentile	-	-	-	640	640

SAT Combined (Critical Reading + Math) Score					
Below 800	0.14%	0.44%	0.00%	0.16%	0.00%
800 - 900	1.28%	1.62%	1.71%	1.30%	0.91%
910 - 1000	7.38%	5.30%	6.57%	5.69%	4.17%
1010 - 1100	21.28%	16.94%	15.14%	13.98%	13.61%
1110 - 1200	28.51%	27.84%	30.29%	27.32%	25.59%
1210 - 1300	24.82%	28.42%	27.14%	27.80%	31.03%
1310 - 1400	12.48%	14.29%	15.29%	18.21%	17.24%
Above 1400	4.11%	5.15%	3.86%	5.53%	7.44%
SAT Combined Score Total					
Mean	1177	1194	1191	1207	1219
25th percentile	1080	1110	1113	1120	1130
75th percentile	1260	1290	1280	1300	1300

Week Three Cohort Report

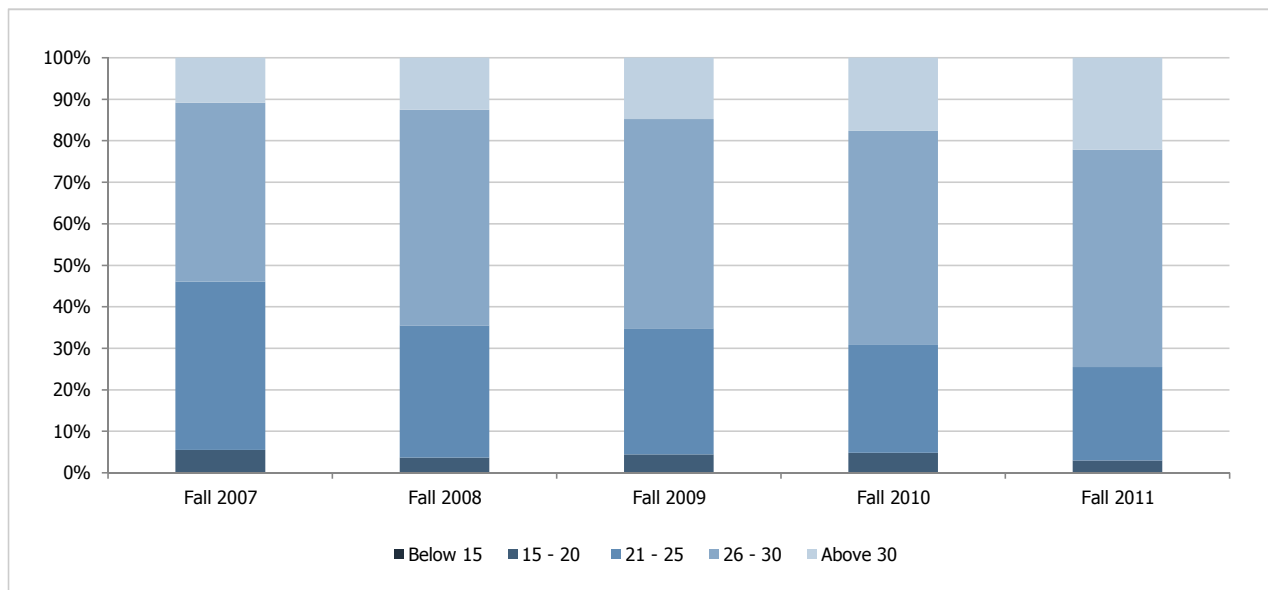
Admission Scores of First-Time, First-Year Cohorts

	Fall 2007	Fall 2008	Fall 2009	Fall 2010	Fall 2011
Cohort size	1,140	1,145	1,210	1,231	1,243

ACT Composite Score					
Below 15	0.00%	0.00%	0.00%	0.00%	0.00%
15 - 20	5.53%	3.66%	4.46%	4.79%	3.01%*
21 - 25	40.50%	31.83%	30.36%	25.98%	22.47%
26 - 30	43.14%	51.95%	50.45%	51.62%	52.37%
Above 30	10.82%	12.56%	14.73%	17.61%	22.15%*
ACT Composite Score Total					
Mean	26	27	27	27	28
25th percentile	23	24	24	25	25
75th percentile	28	29	29	30	30

* Indicates a statistically significantly different value than the previous year at $p \leq .05$.

Distribution of ACT Composite Scores of First-Time, First-Year Cohorts



Week Three Cohort Report

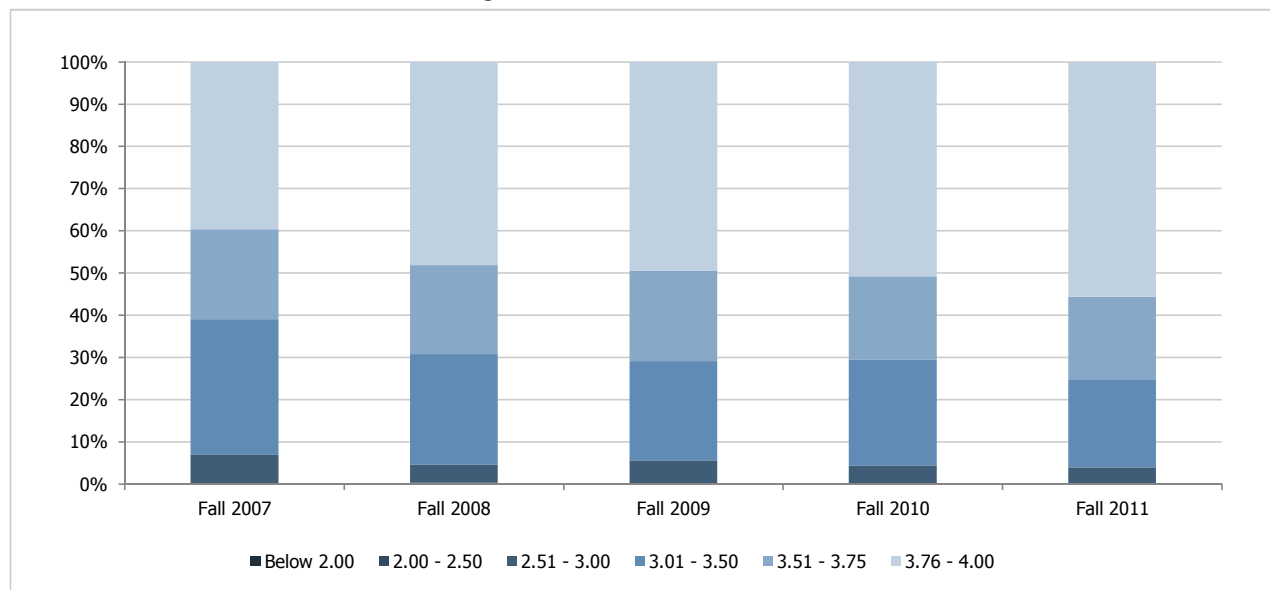
Admission Scores of First-Time, First-Year Cohorts

	Fall 2007	Fall 2008	Fall 2009	Fall 2010	Fall 2011
Cohort size	1,140	1,145	1,210	1,231	1,243

High School GPA					
Below 2.00	0.00%	0.00%	0.00%	0.00%	0.00%
2.00 - 2.50	0.09%	0.37%	0.26%	0.44%	0.18%
2.51 - 3.00	6.79%	4.22%	5.33%	3.93%	3.79%
3.01 - 3.50	32.20%	26.21%	23.49%	25.09%	20.69%
3.51 - 3.75	21.28%	21.08%	21.48%	19.76%	19.72%
3.76 - 4.00	39.63%	48.12%	49.43%	50.79%	55.63%
High School GPA Total					
Mean	3.59	3.66	3.68	3.70	3.71
25th percentile	3.34	3.44	3.50	3.49	3.51
75th percentile	3.96	4.00	4.00	4.00	4.00

High School Percentile					
Top tenth	35.00%	35.00%	45.00%	45.00%	44.75%
Top quarter	66.00%	66.00%	75.00%	76.00%	81.39%
Top half	95.00%	96.00%	96.00%	96.00%	97.03%

Distribution of High School GPAs of First-Time, First-Year Cohorts

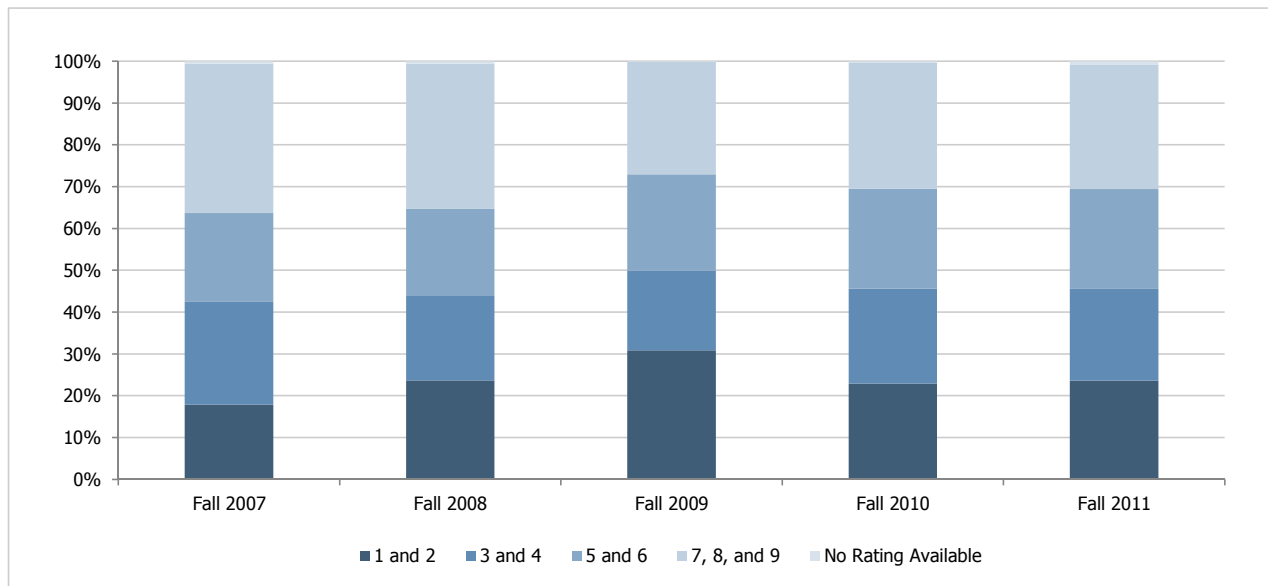


Week Three Cohort Report

Admission Ratings of First-Time, First-Year Cohorts

	Fall 2007	Fall 2008	Fall 2009	Fall 2010	Fall 2011
Cohort size	1,140	1,145	1,210	1,231	1,243
1 and 2 (Highest)					
Enrolled	203	271	373	282	293
Percent of cohort	17.81%	23.67%	30.83%	22.91%	23.57%
3 and 4					
Enrolled	282	233	231	280	273
Percent of cohort	24.74%	20.35%	19.09%	22.75%	21.96%
5 and 6					
Enrolled	241	238	279	294	297
Percent of cohort	21.14%	20.79%	23.06%	23.88%	23.89%
7, 8, and 9 (Lowest)					
Enrolled	408	397	325	370	369
Percent of cohort	35.79%	34.67%	26.86%	30.06%	29.69%
No Rating Available					
Enrolled	6	6	2	5	11
Percent of cohort	0.53%	0.52%	0.17%	0.41%	0.88%
Admission Rating Total					
Mean admission rating	5.4	5.2	4.7	5.1	4.9

Distribution of Admission Ratings Among First-Time, First-Year Cohorts



Week Three Cohort Report

Demographics of First-Time, First-Year Cohorts

	Fall 2007	Fall 2008	Fall 2009	Fall 2010	Fall 2011
Cohort size	1,140	1,145	1,210	1,231	1,243

Gender

Female					
Enrolled	622	639	694	670	665
Percent of cohort	54.56%	55.81%	57.36%	54.43%	53.5%
Male					
Enrolled	518	506	516	561	578
Percent of cohort	45.44%	44.19%	42.64%	45.57%	46.50%

Geographic Origin

Colorado					
Enrolled	466	472	513	507	453
Percent of cohort	40.88%	41.22%	42.4%	41.19%	36.44%*
Out-of-State					
Enrolled	605	599	609	617	662
Percent of cohort	53.07%	52.31%	50.33%	50.12%	53.26%
International (Non-Resident Alien)					
Enrolled	52	63	73	89	117
Percent of cohort	4.56%	5.50%	6.03%	7.23%	9.41%
Geographic Origin Unknown					
Enrolled	17	11	15	18	11
Percent of cohort	1.49%	0.96%	1.24%	1.46%	0.88%

* Indicates a statistically significantly different value than the previous year at $p \leq .05$.

Note:

1. Geographic origin reports the student's permanent residence at the time of application.

Week Three Cohort Report

Demographics of First-Time, First-Year Cohorts

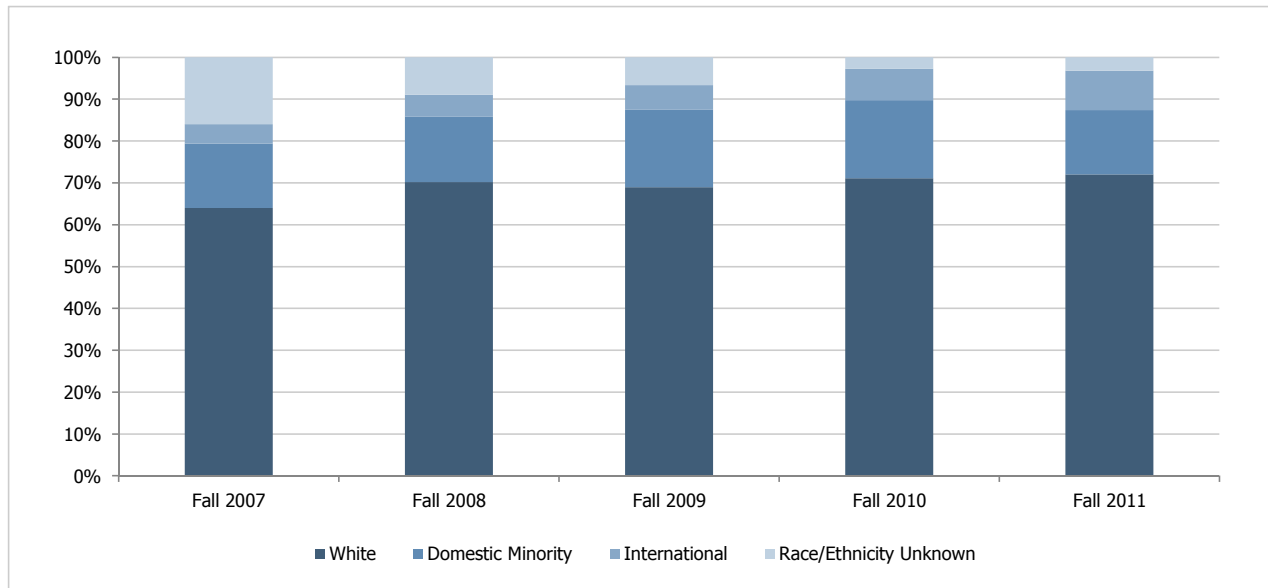
	Fall 2007	Fall 2008	Fall 2009	Fall 2010	Fall 2011
Cohort size	1,140	1,145	1,210	1,231	1,243

Race/Ethnicity and Citizenship

White					
Enrolled	730	804	835	875	895
Percent of cohort	64.04%	70.22%	69.01%	71.08%	72.00%
Domestic Minority					
Enrolled	175	178	224	230	191
Percent of cohort	15.35%	15.55%	18.51%	18.68%	15.37%*
International (Non-Resident Alien)					
Enrolled	53	61	71	92	117
Percent of cohort	4.65%	5.33%	5.87%	7.47%	9.41%
Race/Ethnicity Unknown					
Enrolled	182	102	80	34	40
Percent of cohort	15.96%	8.91%	6.61%	2.76%	3.22%

* Indicates a statistically significantly different value than the previous year at $p \leq .05$.

Distribution of Race/Ethnicity and Citizenship Categories Among First-Time, First-Year Cohorts



Week Three Cohort Report

Demographics of First-Time, First-Year Cohorts

	Fall 2007	Fall 2008	Fall 2009	Fall 2010	Fall 2011
Cohort size	1,140	1,145	1,210	1,231	1,243

Race/Ethnicity

Hispanic or Latino					
Enrolled	68	78	99	106	84
Percent of cohort	5.96%	6.81%	8.18%	8.61%	6.76%
American Indian or Alaska Native					
Enrolled	17	20	7	5	6
Percent of cohort	1.49%	1.75%	0.58%	0.41%	0.48%
Asian					
Enrolled	61	59	59	51	46
Percent of cohort	5.35%	5.15%	4.88%	4.14%	3.70%
Black or African American					
Enrolled	29	21	36	30	17
Percent of cohort	2.54%	1.83%	2.98%	2.44%	1.37%
Native Hawaiian or Other Pacific Islander					
Enrolled	-	-	1	0	2
Percent of cohort	-	-	0.08%	0.00%	0.16%
Two or More Races					
Enrolled	-	-	22	38	36
Percent of cohort	-	-	1.82%	3.09%	2.90%
White					
Enrolled	730	804	835	875	895
Percent of cohort	64.04%	70.22%	69.01%	71.08%	72.00%
International (Non-Resident Alien)					
Enrolled	53	63	71	92	117
Percent of cohort	4.65%	5.50%	5.87%	7.47%	9.41%
Race/Ethnicity Unknown					
Enrolled	182	100	80	34	40
Percent of cohort	15.96%	8.73%	6.61%	2.76%	3.22%

Note:

1. Categories reflect IPEDS definitions for race and ethnicity implemented in Fall 2009. A dash indicates the category did not exist during the noted academic period.

Week Three Cohort Report

Involvement of First-Time, First-Year Cohorts

	Fall 2007	Fall 2008	Fall 2009	Fall 2010	Fall 2011
Cohort size	1,140	1,145	1,210	1,231	1,243

Athletics

Student Athletes					
Enrolled	91	82	96	96	85
Percent of cohort	7.98%	7.16%	7.93%	7.80%	6.84%

Honors Program

Honors Program Participants					
Enrolled	61	97	129	95	89
Percent of cohort	5.35%	8.47%	10.66%	7.72%	7.16%
Honors Floor Residents					
Enrolled	31	36	33	35	37
Percent of cohort	2.72%	3.14%	2.73%	2.84%	2.98%

Week Three Cohort Report

Involvement of First-Time, First-Year Cohorts

	Fall 2007	Fall 2008	Fall 2009	Fall 2010	Fall 2011
Cohort size	1,140	1,145	1,210	1,231	1,243

Living and Learning Communities (LLCs)

Creativity and Entrepreneurship LLC					
Enrolled	21	21	22	22	26
Percent of cohort	1.84%	1.83%	1.82%	1.79%	2.09%
Environmental LLC					
Enrolled	21	22	20	22	22
Percent of cohort	1.84%	1.92%	1.65%	1.79%	1.77%
International LLC					
Enrolled	33	28	31	24	33
Percent of cohort	2.89%	2.45%	2.56%	1.95%	2.65%
Pioneer Leadership Program					
Enrolled	67	68	66	68	64
Percent of cohort	5.88%	5.94%	5.45%	5.52%	5.15%
Social Justice LLC					
Enrolled	22	22	20	21	21
Percent of cohort	1.93%	1.92%	1.65%	1.71%	1.69%
Wellness LLC					
Enrolled	26	27	27	27	29
Percent of cohort	2.28%	2.36%	2.23%	2.19%	2.33%
LLC Total					
Enrolled	190	188	186	184	195
Percent of cohort	16.67%	16.42%	15.37%	14.95%	15.69%

Week Three Cohort Report

Majors of First-Time, First-Year Cohorts

	Fall 2007	Fall 2008	Fall 2009	Fall 2010	Fall 2011
Cohort size	1,140	1,145	1,210	1,231	1,243
Arts and Humanities					
Enrolled	128	135	172	167	128
Percent of cohort	11.23%	11.79%	14.21%	13.57%	10.3%*
Social Sciences					
Enrolled	143	150	172	175	198
Percent of cohort	12.54%	13.1%	14.21%	14.22%	15.93%
Daniels College of Business					
Enrolled	438	430	399	89	114
Percent of cohort	38.42%	37.55%	32.98%	7.23%	9.17%
Engineering and Computer Science					
Enrolled	63	56	69	78	88
Percent of cohort	5.53%	4.89%	5.70%	6.34%	7.08%
Josef Korbel School of International Studies					
Enrolled	59	43	71	64	69
Percent of cohort	5.18%	3.76%	5.87%	5.20%	5.55%
Natural Sciences and Mathematics					
Enrolled	127	186	180	178	216
Percent of cohort	11.14%	16.24%	14.88%	14.46%	17.34%*
Undeclared					
Undeclared - General					
Enrolled	182	145	147	249	225
Percent of cohort	15.96%	12.66%	12.15%	20.23%	18.1%
Undeclared - Business Interest					
Enrolled	-	-	-	231	205
Percent of cohort	-	-	-	18.77%	16.65%
Undeclared Total					
Enrolled	182	145	147	480	430
Percent of cohort	15.98%	12.67%	12.16%	39.01%	34.6%*

* Indicates a statistically significantly different value than the previous year at $p \leq .05$.

Note:

- In Fall 2010, the Daniels College of Business implemented a secondary admission process for applicants. Students with undeclared majors who were not directly admitted to Daniels at the time of initial application are reported as "Undeclared - Business Interest."

Week Three Cohort Report

Financial Need Levels of First-Time, First-Year Cohorts

	Fall 2007	Fall 2008	Fall 2009	Fall 2010	Fall 2011
Cohort size	1,140	1,145	1,210	1,231	1,243

No Need Applications Submitted					
Enrolled	-	627	579	575	480
Percent of cohort	-	54.76%	47.85%	46.71%	38.62%*
No CSS Submitted/FAFSA Only					
Enrolled	-	139	136	118	126
Percent of cohort	-	12.14%	11.24%	9.59%	10.14%
No Unmet Need					
Enrolled	-	136	177	220	286
Percent of cohort	-	11.88%	14.63%	17.87%	23.01%*
Unmet Need \$1 - \$5,000					
Enrolled	-	107	167	165	148
Percent of cohort	-	9.34%	13.80%	13.4%	11.91%
Unmet Need \$5,001 - \$10,000					
Enrolled	-	78	84	102	129
Percent of cohort	-	6.81%	6.94%	8.29%	10.38%
Unmet Need Greater Than \$10,000					
Enrolled	-	58	67	51	74
Percent of cohort	-	5.07%	5.54%	4.14%	5.95%*

* Indicates a statistically significantly different value than the previous year at $p \leq .05$.

Notes:

1. Beginning Fall 2011, Institutional Research and Analysis began using institutional aid methodology to identify student need levels.
2. Unmet need categories refer only to students who submitted an institutional (CSS) aid application.
3. Institutional methodology data are not available prior to Fall 2008.

Week Three Cohort Report

Financial Need Levels of First-Time, First-Year Cohorts

	Fall 2007	Fall 2008	Fall 2009	Fall 2010	Fall 2011
Cohort size	1,140	1,145	1,210	1,231	1,243

Admission Ratings 1 and 2

No Need Applications Submitted					
Enrolled	-	141	162	132	84
Percent of cohort	-	12.31%	13.39%	10.72%	6.76%*
No CSS Submitted/FAFSA Only					
Enrolled	-	39	52	28	30
Percent of cohort	-	3.41%	4.30%	2.27%	2.41%
No Unmet Need					
Enrolled	-	40	65	72	89
Percent of cohort	-	3.49%	5.37%	5.85%	7.16%
Unmet Need \$1 - \$5,000					
Enrolled	-	26	61	33	55
Percent of cohort	-	2.27%	5.04%	2.68%	4.42%*
Unmet Need \$5,001 - \$10,000					
Enrolled	-	19	20	16	33
Percent of cohort	-	1.66%	1.65%	1.30%	2.65%*
Unmet Need Greater Than \$10,000					
Enrolled	-	6	13	1	2
Percent of cohort	-	0.52%	1.07%	0.08%	0.16%
Total					
Enrolled	-	271	373	282	293
Percent of cohort	-	23.67%	30.83%	22.91%	23.57%

* Indicates a statistically significantly different value than the previous year at $p \leq .05$.

Notes:

1. Beginning Fall 2011, Institutional Research and Analysis began using institutional aid methodology to identify student need levels.
2. Unmet need categories refer only to students who submitted an institutional (CSS) aid application.
3. Institutional methodology data are not available prior to Fall 2008.

Week Three Cohort Report

Financial Need Levels of First-Time, First-Year Cohorts

	Fall 2007	Fall 2008	Fall 2009	Fall 2010	Fall 2011
Cohort size	1,140	1,145	1,210	1,231	1,243

Admission Ratings 3 and 4

No Need Applications Submitted					
Enrolled	-	112	91	111	85
Percent of cohort	-	9.78%	7.52%	9.02%	6.84%*
No CSS Submitted/FAFSA Only					
Enrolled	-	35	26	25	32
Percent of cohort	-	3.06%	2.15%	2.03%	2.57%
No Unmet Need					
Enrolled	-	33	36	52	85
Percent of cohort	-	2.88%	2.98%	4.22%	6.84%*
Unmet Need \$1 - \$5,000					
Enrolled	-	25	45	55	36
Percent of cohort	-	2.18%	3.72%	4.47%	2.9%*
Unmet Need \$5,001 - \$10,000					
Enrolled	-	24	25	28	28
Percent of cohort	-	2.10%	2.07%	2.27%	2.25%
Unmet Need Greater Than \$10,000					
Enrolled	-	4	8	9	7
Percent of cohort	-	0.35%	0.66%	0.73%	0.56%
Total					
Enrolled	-	233	231	280	273
Percent of cohort	-	20.35%	19.09%	22.75%	21.96%

* Indicates a statistically significantly different value than the previous year at $p \leq .05$.

Notes:

1. Beginning Fall 2011, Institutional Research and Analysis began using institutional aid methodology to identify student need levels.
2. Unmet need categories refer only to students who submitted an institutional (CSS) aid application.
3. Institutional methodology data are not available prior to Fall 2008.

Week Three Cohort Report

Financial Need Levels of First-Time, First-Year Cohorts

	Fall 2007	Fall 2008	Fall 2009	Fall 2010	Fall 2011
Cohort size	1,140	1,145	1,210	1,231	1,243

Admission Ratings 5 and 6

No Need Applications Submitted					
Enrolled	-	115	123	114	113
Percent of cohort	-	10.04%	10.17%	9.26%	9.09%
No CSS Submitted/FAFSA Only					
Enrolled	-	28	32	31	27
Percent of cohort	-	2.45%	2.64%	2.52%	2.17%
No Unmet Need					
Enrolled	-	33	46	57	52
Percent of cohort	-	2.88%	3.80%	4.63%	4.18%
Unmet Need \$1 - \$5,000					
Enrolled	-	27	36	44	33
Percent of cohort	-	2.36%	2.98%	3.57%	2.65%
Unmet Need \$5,001 - \$10,000					
Enrolled	-	23	25	37	44
Percent of cohort	-	2.01%	2.07%	3.01%	3.54%
Unmet Need Greater Than \$10,000					
Enrolled	-	12	17	11	28
Percent of cohort	-	1.05%	1.40%	0.89%	2.25%*
Total					
Enrolled	-	238	279	294	297
Percent of cohort	-	20.79%	23.06%	23.88%	23.89%

* Indicates a statistically significantly different value than the previous year at $p \leq .05$.

Notes:

1. Beginning Fall 2011, Institutional Research and Analysis began using institutional aid methodology to identify student need levels.
2. Unmet need categories refer only to students who submitted an institutional (CSS) aid application.
3. Institutional methodology data are not available prior to Fall 2008.

Week Three Cohort Report

Financial Need Levels of First-Time, First-Year Cohorts

	Fall 2007	Fall 2008	Fall 2009	Fall 2010	Fall 2011
Cohort size	1,140	1,145	1,210	1,231	1,243

Admission Ratings 7, 8, and 9

No Need Applications Submitted					
Enrolled	-	254	202	215	187
Percent of cohort	-	22.18%	16.69%	17.47%	15.04%
No CSS Submitted/FAFSA Only					
Enrolled	-	37	26	33	37
Percent of cohort	-	3.23%	2.15%	2.68%	2.98%
No Unmet Need					
Enrolled	-	30	29	38	60
Percent of cohort	-	2.62%	2.40%	3.09%	4.83%*
Unmet Need \$1 - \$5,000					
Enrolled	-	29	25	33	24
Percent of cohort	-	2.53%	2.07%	2.68%	1.93%
Unmet Need \$5,001 - \$10,000					
Enrolled	-	12	14	21	24
Percent of cohort	-	1.05%	1.16%	1.71%	1.93%
Unmet Need Greater Than \$10,000					
Enrolled	-	35	29	30	37
Percent of cohort	-	3.06%	2.40%	2.44%	2.98%
Total					
Enrolled	-	397	325	370	369
Percent of cohort	-	34.67%	26.86%	30.06%	29.69%

* Indicates a statistically significantly different value than the previous year at $p \leq .05$.

Notes:

1. Beginning Fall 2011, Institutional Research and Analysis began using institutional aid methodology to identify student need levels.
2. Unmet need categories refer only to students who submitted an institutional (CSS) aid application.
3. Institutional methodology data are not available prior to Fall 2008.

Week Three Cohort Report

Financial Need Levels of First-Time, First-Year Cohorts

	Fall 2007	Fall 2008	Fall 2009	Fall 2010	Fall 2011
Cohort size	1,140	1,145	1,210	1,231	1,243

No Admission Rating Available

No Need Applications Submitted					
Enrolled	-	5	1	3	11
Percent of cohort	-	0.44%	0.08%	0.24%	0.88%*
No CSS Submitted/FAFSA Only					
Enrolled	-	0	0	1	0
Percent of cohort	-	0.00%	0.00%	0.08%	0%
No Unmet Need					
Enrolled	-	0	1	1	0
Percent of cohort	-	0.00%	0.08%	0.08%	0%
Unmet Need \$1 - \$5,000					
Enrolled	-	0	0	0	0
Percent of cohort	-	0.00%	0.00%	0.00%	0.00%
Unmet Need \$5,001 - \$10,000					
Enrolled	-	0	0	0	0
Percent of cohort	-	0.00%	0.00%	0.00%	0.00%
Unmet Need Greater Than \$10,000					
Enrolled	-	1	0	0	0
Percent of cohort	-	0.09%	0.00%	0.00%	0.00%
Total					
Enrolled	-	6	2	5	11
Percent of cohort	-	0.52%	0.17%	0.41%	0.88%

* Indicates a statistically significantly different value than the previous year at $p \leq .05$.

Notes:

1. Beginning Fall 2011, Institutional Research and Analysis began using institutional aid methodology to identify student need levels.
2. Unmet need categories refer only to students who submitted an institutional (CSS) aid application.
3. Institutional methodology data are not available prior to Fall 2008.

Week Three Cohort Report

VIP School Students of First-Time, First-Year Cohorts

	Fall 2007	Fall 2008	Fall 2009	Fall 2010	Fall 2011
Cohort size	1,140	1,145	1,210	1,231	1,243
West High School					
Enrolled	2	3	1	3	1
Percent of cohort	0%	0%	0%	0%	0%
East High School					
Enrolled	8	5	12	9	1
Percent of cohort	1%	0%	1%	0%	0%
Abraham Lincoln High School					
Enrolled	0	1	3	7	8
Percent of cohort	0%	0%	0%	0%	0%
Pinnacle Charter School					
Enrolled	0	2	1	5	3
Percent of cohort	0%	0%	0%	0%	0%
Denver Center for International Studies					
Enrolled	3	4	4	2	3
Percent of cohort	0%	0%	0%	0%	0%
Denver School of Science and Technology					
Enrolled	0	0	3	9	3
Percent of cohort	0%	0%	0%	0%	0%
VIP Schools Total					
Enrolled	13	15	24	35	19
Percent of cohort	1%	1%	2%	3%	2%