

MEMO

Date: December 16, 2011
To: University of Denver Administrators
From: Christopher Pena (303-871-2808, christopher.pena@du.edu)
Subject: Fall 2011 Transfer Cohort Report

Please find attached the report on Fall 2011 degree-seeking transfer students as of the week three census date. The report excludes students in The Women's College and University College. If you would like any additional information about this cohort, please let me know.

- **Cohort Size:** The Fall 2011 transfer cohort is composed of 207 students, an increase of 2.99% over the Fall 2010 transfer cohort of 201 students.
- **Admission Ratings:** The average admission rating of the Fall 2011 transfer cohort is 5.0, 7.4% better than the average rating of 5.4 of the Fall 2010 transfer cohort (on a scale of 1 to 9, with 1 being the highest). The distribution of admission ratings is not statistically significantly different than the Fall 2010 transfer cohort ($p \leq .05$).
- **Enrollment Yield:** The enrollment yield of accepted transfer applicants for Fall 2011 is 35.94%, which is statistically significantly lower than 44.67% for Fall 2010 ($p \leq .05$).
- **Geographic Origin:** 54.11% of students in the Fall 2011 transfer cohort are from Colorado, 36.71% are from out of state, and 7.73% are international. The distribution of geographic origin is not statistically significantly different than the Fall 2010 transfer cohort ($p \leq .05$).
- **Inclusiveness:** 20.29% of students in the Fall 2011 transfer cohort self-identified as domestic minorities, which is not statistically significantly different than the Fall 2010 transfer cohort ($p \leq .05$). The distribution of students in specific race and ethnicity categories is not significantly statistically different than the Fall 2010 transfer cohort ($p \leq .05$).
- **Previous Institution Locations:** 39.13% of students in the Fall 2011 transfer cohort transferred from an institution in Colorado, while 49.76% transferred from an out-of-state one. The distribution of the locations of previous institutions is not statistically significantly different than the Fall 2010 transfer cohort ($p \leq .05$).
- **Previous Institution Types:** 24.15% of students in the Fall 2011 transfer cohort transferred from a private institution, while 64.73% transferred from a public one. 36.23% transferred from a 2-year institution, while 52.66% transferred from a 4-year one. The distribution of students who transferred from private/public and 2-year/4-year institutions is not statistically significantly different than the Fall 2010 transfer cohort ($p \leq .05$).
- **Financial Aid:** The distribution of financial need categories of students in the Fall 2011 transfer cohort is not statistically significantly different than the Fall 2010 transfer cohort ($p \leq .05$).

Week Three Cohort Report

Summary of Transfer Cohorts

	Fall 2007	Fall 2008	Fall 2009	Fall 2010	Fall 2011
Cohort size	219	206	191	201	207

Applications					
Completed applications	470	455	511	628	785
Accepted applications	393	385	412	450	514
Applications Total					
Acceptance rate	83.62%	84.62%	80.63%	71.66%	65.48%*

Enrollment Yield					
Yield rate	55.73%	53.51%	46.36%	44.67%	40.27%

Enrollment					
Average registered hours	15.5	15.4	15.3	15.3	15.4
Average transfer hours	65.5	64	66.7	66.1	61.9

Class Level					
One (0 - 44 credits)	69	62	47	56	64
Two (45 - 89 credits)	85	88	94	90	96
Three (90 - 134 credits)	58	47	42	47	42
Four (135+ credits)	7	9	8	8	5

Student Athletes					
Enrolled	19	7	13	9	9
Percent of cohort	8.68%	3.4%	6.81%	4.48%	4.35%

Honors Program					
Enrolled	8	1	1	0	0
Percent of cohort	3.65%	0.49%	0.52%	0%	0%

* Indicates a statistically significantly different value than the previous year at $p \leq .05$.

Week Three Cohort Report

Previous Institutions of Transfer Cohorts

	Fall 2007	Fall 2008	Fall 2009	Fall 2010	Fall 2011
Cohort size	219	206	191	201	207

2-Year or 4-Year

2-Year					
Enrolled	68	67	51	69	75
Percent of cohort	31.05%	32.52%	26.7%	34.33%	36.23%
4-Year					
Enrolled	114	111	109	92	109
Percent of cohort	52.05%	53.88%	57.07%	45.77%	52.66%
Institution Unknown					
Enrolled	37	28	31	40	23
Percent of Cohort	16.89%	13.59%	16.23%	19.90%	11.11%*

Private or Public

Private					
Enrolled	56	65	54	46	50
One (0 - 44 credits)	25.57%	31.55%	28.27%	22.89%	24.15%
Public					
Enrolled	126	113	106	115	134
Percent of cohort	57.53%	54.85%	55.50%	57.21%	64.73%
Institution Unknown					
Enrolled	37	28	31	40	23
Percent of cohort	16.89%	13.59%	16.23%	19.9%	11.11%*

Location

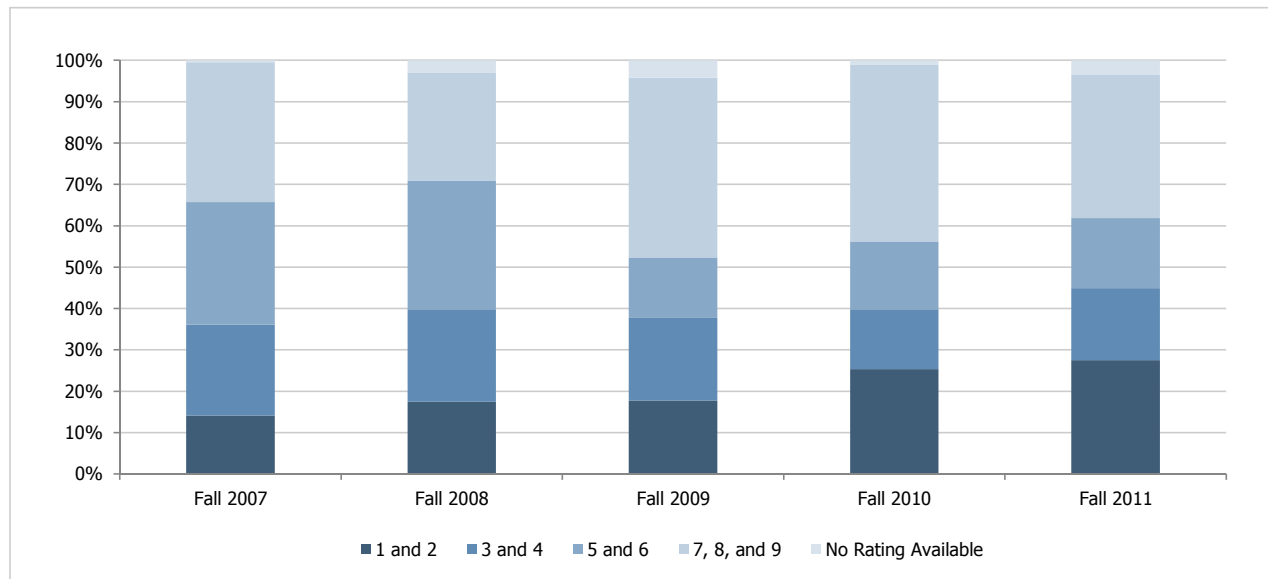
Colorado					
Enrolled	76	70	70	75	81
Percent of cohort	34.70%	33.98%	36.65%	37.31%	39.13%
Out-of-State					
Enrolled	106	108	90	100	103
Percent of cohort	48.40%	52.43%	47.12%	49.75%	49.76%
Institution Unknown					
Enrolled	37	28	31	26	23
Percent of cohort	16.89%	13.59%	16.23%	12.94%	11.11%

Week Three Cohort Report

Admission Ratings of Transfer Cohorts

	Fall 2007	Fall 2008	Fall 2009	Fall 2010	Fall 2011
Cohort size	219	206	191	201	207
1 and 2 (Highest)					
Enrolled	31	36	34	51	57
Percent of cohort	14.16%	17.48%	17.8%	25.37%	27.54%
3 and 4					
Enrolled	48	46	38	29	36
Percent of cohort	21.92%	22.33%	19.9%	14.43%	17.39%
5 and 6					
Enrolled	65	64	28	33	35
Percent of cohort	29.68%	31.07%	14.66%	16.42%	16.91%
7, 8, and 9 (Lowest)					
Enrolled	74	54	83	86	72
Percent of cohort	33.79%	26.21%	43.46%	42.79%	34.78%
No Rating Available					
Enrolled	1	6	8	2	7
One (0 - 44 credits)	0.46%	2.91%	4.19%	1.00%	3.38%
Admission Rating Total					
Mean admission rating	5.5	5.2	5.5	5.4	5

Distribution of Admission Ratings Among Transfer Cohorts



Week Three Cohort Report

Demographics of Transfer Cohorts

	Fall 2007	Fall 2008	Fall 2009	Fall 2010	Fall 2011
Cohort size	219	206	191	201	207

Gender

Female					
Enrolled	100	102	94	100	105
Percent of cohort	45.66%	49.51%	49.21%	49.75%	50.72%
Male					
Enrolled	119	104	97	101	102
Percent of cohort	54.34%	50.49%	50.79%	50.25%	49.28%

Geographic Origin

Colorado					
Enrolled	121	116	120	110	112
Percent of cohort	55.25%	56.31%	62.83%	54.73%	54.11%
Out-of-State					
Enrolled	82	72	50	73	76
One (0 - 44 credits)	37.44%	34.95%	26.18%	36.32%	36.71%
International (Non-Resident Alien)					
Enrolled	11	17	21	18	16
Percent of cohort	5.02%	8.25%	10.99%	8.96%	7.73%
Geographic Origin Unknown					
Enrolled	0	1	0	0	3
Percent of cohort	0%	0.49%	0%	0%	1.45%

Note:

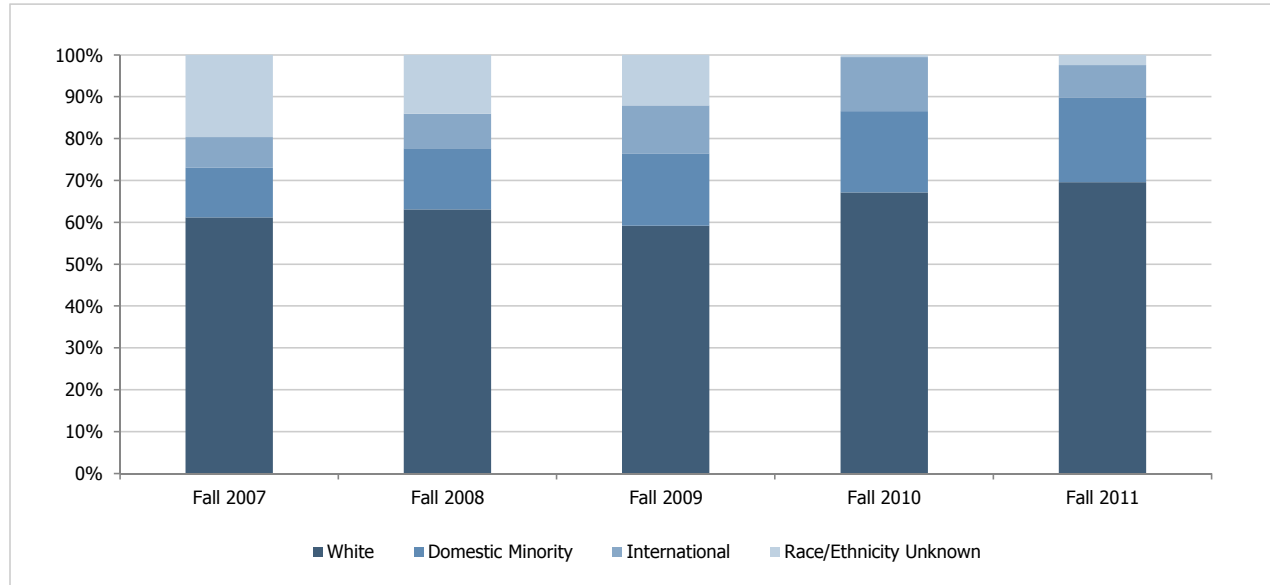
1. Geographic origin reports the student's permanent residence at the time of application.

	Fall 2007	Fall 2008	Fall 2009	Fall 2010	Fall 2011
Cohort size	219	206	191	201	207

Race/Ethnicity and Citizenship

White					
Enrolled	134	130	113	135	144
Percent of cohort	61.19%	63.11%	59.16%	67.16%	69.57%
Domestic Minority					
Enrolled	26	30	33	39	42
Percent of cohort	11.87%	14.56%	17.28%	19.4%	20.29%
International (Non-Resident Alien)					
Enrolled	16	17	22	26	16
Percent of cohort	7.31%	8.25%	11.52%	12.94%	7.73%
Race/Ethnicity Unknown					
Enrolled	43	29	23	1	5
Percent of cohort	19.63%	14.08%	12.04%	0.50%	2.42%

Distribution of Race/Ethnicity and Citizenship Categories Among Transfer Cohorts



	Fall 2007	Fall 2008	Fall 2009	Fall 2010	Fall 2011
Cohort size	219	206	191	201	207

Race/Ethnicity

Hispanic or Latino					
Enrolled	12	13	15	21	14
Percent of cohort	5.48%	6.31%	7.85%	10.45%	6.76%
American Indian or Alaska Native					
Enrolled	3	1	1	1	1
Percent of cohort	1.37%	0.49%	0.52%	0.5%	0.48%
Asian					
Enrolled	4	10	6	3	7
Percent of cohort	1.83%	4.85%	3.14%	1.49%	3.38%
Black or African American					
Enrolled	7	6	7	7	6
Percent of cohort	3.20%	2.91%	3.66%	3.48%	2.90%
Native Hawaiian or Other Pacific Islander					
Enrolled	-	-	1	1	0
Percent of cohort	-	-	0.52%	0.5%	0%
Two or More Races					
Enrolled	-	-	3	6	14
Percent of cohort	-	-	1.57%	2.99%	6.76%
White					
Enrolled	134	130	113	135	144
Percent of cohort	61.19%	63.11%	59.16%	67.16%	69.57%
International (Non-Resident Alien)					
Enrolled	16	17	22	26	16
Percent of cohort	7.31%	8.25%	11.52%	12.94%	7.73%
Race/Ethnicity Unknown					
Enrolled	43	29	23	1	5
Percent of cohort	19.63%	14.08%	12.04%	0.5%	2.42%

Note:

1. Categories reflect IPEDS definitions for race and ethnicity implemented in Fall 2009. A dash indicates the category did not exist during the noted academic period.

Week Three Cohort Report

Majors of Transfer Cohorts

	Fall 2007	Fall 2008	Fall 2009	Fall 2010	Fall 2011
Cohort size	219	206	191	201	207
Arts and Humanities					
Enrolled	35	31	30	38	42
Percent of cohort	15.98%	15.05%	15.71%	18.91%	20.29%
Social Sciences					
Enrolled	45	37	44	42	53
Percent of cohort	20.55%	17.96%	23.04%	20.90%	25.6%
Daniels College of Business					
Enrolled	95	75	60	17	17
Percent of cohort	43.38%	36.41%	31.41%	8.46%	8.21%
Engineering and Computer Science					
Enrolled	5	9	12	8	11
Percent of cohort	2.28%	4.37%	6.28%	3.98%	5.31%
Josef Korbel School of International Studies					
Enrolled	10	15	16	16	14
One (0 - 44 credits)	4.57%	7.28%	8.38%	7.96%	6.76%
Natural Sciences and Mathematics					
Enrolled	10	25	23	25	28
Percent of cohort	4.57%	12.14%	12.04%	12.44%	13.53%
Undeclared					
Undeclared - General					
Enrolled	19	14	6	55	41
Percent of cohort	8.68%	6.8%	3.14%	27.36%	19.81%
Undeclared - Business Interest					
Enrolled	-	-	-	0	1
Percent of cohort	-	-	-	0%	0.48%
Undeclared Total					
Enrolled	19	14	6	55	42
Percent of cohort	8.68%	6.8%	3.14%	27.36%	20.29%

Note:

1. In Fall 2010, the Daniels College of Business implemented a secondary admission process for applicants. Students with undeclared majors who were not directly admitted to Daniels at the time of initial application are identified as "Undeclared - Business Interest."

Week Three Cohort Report

Financial Need Levels of Transfer Cohorts

	Fall 2007	Fall 2008	Fall 2009	Fall 2010	Fall 2011
Cohort size	219	206	191	201	207

No Need Applications Submitted					
Enrolled	-	96	85	79	81
Percent of cohort	-	46.6%	44.5%	39.3%	39.13%
No CSS Submitted/FAFSA Only					
Enrolled	-	35	26	27	27
Percent of cohort	-	16.99%	13.61%	13.43%	13.04%
No Unmet Need					
Enrolled	-	14	20	19	28
Percent of cohort	-	6.8%	10.47%	9.45%	13.53%
Unmet Need \$1 - \$5,000					
Enrolled	-	14	23	34	22
Percent of cohort	-	6.8%	12.04%	16.92%	10.63%
Unmet Need \$5,001 - \$10,000					
Enrolled	-	13	16	16	29
Percent of cohort	-	6.31%	8.38%	7.96%	14.01%
Unmet Need Greater Than \$10,000					
Enrolled	-	34	21	26	20
Percent of cohort	-	16.50%	10.99%	12.94%	9.66%

Notes:

1. Beginning Fall 2011, Institutional Research and Analysis began using institutional aid methodology to identify student need levels.
2. Unmet need categories refer only to students who submitted an institutional (CSS) aid application.
3. Institutional methodology data are not available prior to Fall 2008.

Week Three Cohort Report

Top Ten Previous Institutions of Transfer Cohorts

2011 Transfer Cohort

	2-Year or 4-Year	Private or Public	Location	Enrolled	Percent of Cohort
Arapahoe Community College	2-Year	Public	CO	14	6.76%
University of Colorado	4-Year	Public	CO	9	4.35%
University of Colorado at Boulder	4-Year	Public	CO	8	3.86%
Metropolitan State College of Denver	4-Year	Public	CO	7	3.38%
Front Range Community College	2-Year	Public	CO	6	2.9%
Red Rocks Community College	2-Year	Public	CO	6	2.9%
Community College of Denver	2-Year	Public	CO	6	2.9%
Johnson & Wales University	4-Year	Private	CO	4	1.93%
University of Denver	4-Year	Public	CO	4	1.93%
Pikes Peak Community College	2-Year	Public	CO	3	1.45%
Community College of Aurora	2-Year	Public	CO	3	1.45%
University of Redlands	4-Year	Private	CA	3	1.45%

2010 Transfer Cohort

	2-Year or 4-Year	Private or Public	Location	Enrolled	Percent of Cohort
One (0 - 44 credits)	2-Year	Public	CO	13	6.28%
Front Range Community College	2-Year	Public	CO	8	3.86%
Community College of Aurora	2-Year	Public	CO	7	3.38%
Metropolitan State College of Denver	4-Year	Public	CO	7	3.38%
University of Colorado at Denver	4-Year	Public	CO	5	2.42%
Community College of Denver	2-Year	Public	CO	4	1.93%
Colorado State University	4-Year	Public	CO	3	1.45%
Pikes Peak Community College	2-Year	Public	CO	3	1.45%
Red Rocks Community College	2-Year	Public	CO	3	1.45%
University of Northern Colorado	4-Year	Public	CO	3	1.45%

Week Three Cohort Report

Top Ten Previous Institutions of Transfer Cohorts

2009 Transfer Cohort

	2-Year or 4-Year	Private or Public	Location	Enrolled	Percent of Cohort
Front Range Community College	2-Year	Public	CO	9	4.35%
University of Colorado at Denver	4-Year	Public	CO	8	3.86%
Community College of Denver	2-Year	Public	CO	6	2.9%
Community College of Aurora	2-Year	Public	CO	6	2.9%
Metropolitan State College of Denver	4-Year	Public	CO	6	2.9%
Arapahoe Community College	2-Year	Public	CO	5	2.42%
Colorado State University	4-Year	Public	CO	5	2.42%
Pikes Peak Community College	2-Year	Public	CO	5	2.42%
University of Colorado at Boulder	4-Year	Public	CO	4	1.93%
University of New Mexico	4-Year	Public	NM	3	1.45%
Regis University	4-Year	Private	CO	3	1.45%
University of Northern Colorado	4-Year	Public	CO	3	1.45%

2008 Transfer Cohort

	2-Year or 4-Year	Private or Public	Location	Enrolled	Percent of Cohort
Arapahoe Community College	2-Year	Public	CO	10	4.83%
University of Colorado at Denver	4-Year	Public	CO	8	3.86%
Community College of Denver	2-Year	Public	CO	7	3.38%
Metropolitan State College of Denver	4-Year	Public	CO	6	2.9%
Landmark College	2-Year	Private	VT	5	2.42%
University of Colorado at Boulder	4-Year	Public	CO	4	1.93%
Colorado State University	4-Year	Public	CO	4	1.93%
Pikes Peak Community College	2-Year	Public	CO	4	1.93%
Creighton University	4-Year	Private	NE	3	1.45%
Regis University	4-Year	Private	CO	3	1.45%
Community College of Aurora	2-Year	Public	CO	3	1.45%
Red Rocks Community College	2-Year	Public	CO	3	1.45%

Week Three Cohort Report

Top Ten Previous Institutions of Transfer Cohorts

2007 Transfer Cohort

	2-Year or 4-Year	Private or Public	Location	Enrolled	Percent of Cohort
Metropolitan State College of Denver	2-Year	Public	CO	13	6.28%
Red Rocks Community College	2-Year	Public	CO	7	3.38%
Community College of Denver	2-Year	Public	CO	7	3.38%
Arapahoe Community College	2-Year	Public	CO	7	3.38%
Front Range Community College	2-Year	Public	CO	6	2.9%
University of Colorado at Denver	4-Year	Public	CO	6	2.9%
Community College of Aurora	2-Year	Public	CO	5	2.42%
Pikes Peak Community College	2-Year	Public	CO	3	1.45%
Landmark College	2-Year	Private	VT	3	1.45%
The New School	4-Year	Private	NY	3	1.45%
Colorado State University	4-Year	Public	CO	3	1.45%
University of Colorado at Boulder	4-Year	Public	CO	3	1.45%
Montana State University	4-Year	Public	MT	3	1.45%
Regis University	4-Year	Private	CO	3	1.45%