

From: Lindsay Anderson
Sent: Friday, February 07, 2014 2:06 PM
Subject: Graduate School of Professional Psychology • Winter Quarter Alumni Newsletter • February 2014



TABLE OF CONTENTS

- [Message from Lindsay, Alumni Relations Coordinator](#)
- [Alumni Spotlight](#)
- [Student Spotlight](#)
- [Faculty Spotlight](#)
- [International Disaster Psychology Students Help Colorado Heal After Flooding](#)
- [Artur Poczwardowski recipient of the Distinguished Teaching Award for 2013](#)
- [How Can I Help?](#)

Announcements

PPC Community Supervisors Wanted

Fernand Lubuguin, the Director of the Professional Psychology Clinic at the Graduate School of Professional Psychology is looking for Community Supervisors.

Message from Lindsay, Alumni Relations Coordinator

Dear GSPP Alumni,
This is now the third installment of our newly revised Alumni Newsletter. This quarter, we focus on the International Disaster Psychology Master's Program. You will see spotlights of IDP Faculty, Alumni, and Current Students as well as general GSPP news. I hope that this, and the other email communication I include you on, is helpful in continuing your relationship with GSPP. Please continue to send me announcements of your professional successes and personal development. As your Alumni Relations Coordinator, I welcome you to contact me with licensing questions and any other questions regarding GSPP. Also, as you communicate with fellow Alumni, ask if they are receiving my emails. I am always updating our alumni contact list and would love to fill in some of the blanks! We hope your new year is off to a great start.



Best wishes,

[More Announcements >>](#)

Forensic Alumni - Look for a department update in the coming weeks! Forensic students will be sending you a New Year update via email.

GSPP in the Media!



Alum, **Jessica Dolgan** (PsyD, '04), has teamed up with a couple friends and opened The Humble Pie Store in Denver! The ladies were recently featured in EnCompassMag (Jan/Feb 2014 Issue) and will be featured in Sunset Magazine in March. Visit their website www.humblepiestore.com or stop in for some yummy treats!

Recent Publications



Lindsay Anderson
Executive Assistant to the Dean
Alumni Relations Coordinator
Quarterly Alumni Newsletter Editor
Graduate School of Professional Psychology

Alumni Spotlight



Gwen M. Vogel, Psy.D.'05
*Lecturer,
Director of Field Placement,
International Disaster
Psychology Program*

GSPP Alumni, Gwen M. Vogel is a new addition to our GSPP faculty! Prior to coming to GSPP, Gwen worked for many years as a trainer, consultant, and program developer for humanitarian organizations including Doctors without Borders / Medecins Sans Frontiers, the Center for Victims of Torture and the

Open Society Foundation in various locations including Nigeria, Liberia, Sierra Leone, Jordan, Myanmar, Thailand and Bosnia. She also maintains a private practice and conducts psychological evaluations for asylum seekers, T and U Visas for local immigration attorneys and HealthRight international. We are happy to have Gwen back at GSPP!

[Read the Q&A with Gwen >>](#)

Student Spotlight

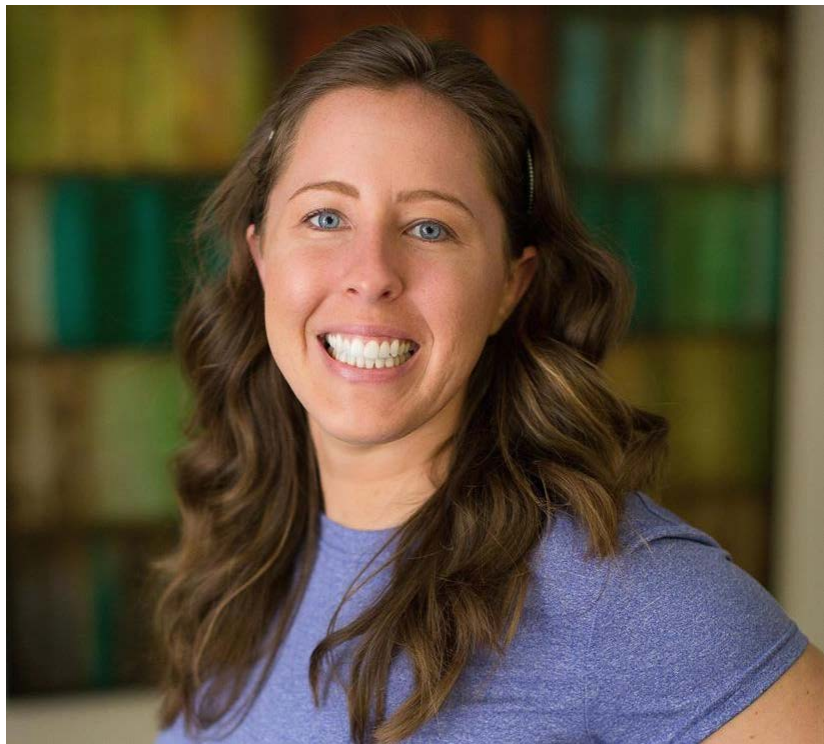
GSPP Faculty member and Director of the Sport and Performance Program, Mark Aoyagi published an article in November and appeared on the radio show The Real Deal on KGNU! Great Job, Mark!

[Read his article *Teaching Theories of Performance Excellence to Sport & Performance Psychology Consultants-in-Training*](#)
[>>](#)

[Listen to his radio broadcast! The Real Deal in Sports starts at 9am or at time stamp 26:26 in the recording >>](#)



GSPP Faculty members, Steve Portenga and Mark Aoyagi, recently published the book chapter, "Five ring fever:



Jessica Cabral

MAIDP Student

Jessica chose GSPP for the chance to travel, work, and live internationally as part of the MA in International Disaster Psychology (IDP) program. She says, "I knew the IDP program would be an unmatched opportunity that would further broaden my education and perspective on international relief and response as it pertains to mental health." With the knowledge and experience she has gained during her time at GSPP and her time spent in the field, Jessica believes that she is extremely well prepared to begin her journey abroad, addressing critical mental health issues.

"I feel as though my academics and field placements (both domestically and internationally) have provided me an opportunity to expand my knowledge base on emergency mental health, education, and human relations. I now understand what will be expected of me as a disaster mental health professional and I looked forward to finding my niche in the field."

[Read More About Jessica >>](#)

Faculty Spotlight

Judith E. Fox, Ph.D.

Associate Professor
Director, International
Disaster Psychology

If you would have asked Judy Fox 20 years ago if she

Ethical considerations when consulting with Olympic athletes” in the book *Ethical Issues in sport, exercise, and performance psychology*

[Read the chapter here!](#)



Susan Albers (PsyD '02) published a book this last Fall, *EatQ: Unlock the Weight Loss Power of Emotional Intelligence*

Learn more about this text at www.eatq.com

If you have any recent publications that you'd like to share, email [Alumni Relations](#)

Upcoming Events

February 21, 2014

Elevating the Conversation: Critical Skills Training in Suicide Risk Assessment, Management, and Support

Full-Day Training for Mental Health Professionals and Students
by Dr. Thomas Joiner

[Register Here](#)

would be travelling throughout Bosnia-Herzegovina, Croatia, Serbia and Macedonia talking with NGOs doing psychosocial work about connecting with our program, taking rides alongside roaming animals through the streets of Chennai to work with



agencies assisting community groups affected by trauma, hopping on a tiny plane to consult with a medical clinic treating women and children affected by HIV and AIDS in Namakkal (India), riding through steep mountain passes in India surrounded by monkeys to give a presentation to women about pursuing good health care, traveling to Ghana and riding on long dusty roads to set-up student internship work with Liberian refugees, or flying throughout China to collaborate with psychologists doing disaster work in the Sichuan Province, she would have looked at you in disbelief. Judy says "It has been my personal and professional fortune since 2006 to have the opportunity as a faculty member in GSPP and Director of the MAIDP Program to utilize my clinical psychology practice and teaching background in new and creative ways." As you will read, Judy manages our innovative IDP curriculum, world-wide internship locations, and has created a new trauma and disaster relieve clinic. GSPP is lucky to have her!

[Read More about Judy >>](#)

International Disaster Psychology Students Help Colorado Heal After Flooding

**Friday, April 25 &
Saturday, April 26, 2014**

Working with Shame in
Psychotherapy and
Psychological
Assessment

Two-Day Training for
Mental Health
Professionals and
Students
by Dr. Stephen E. Finn

[More Information & to
Register Click Here](#)

**Save the Date!
August 1st & 2nd
2014**

GSPP All Class Reunion
@ CE Event!

Weekend will include CE
event, picnic with alumni
and past and present
faculty. **Stay Tuned for
More Details!**

[View GSPP's Event
Calendar Here](#)

**Space Needs /
Availability**

Alum, Liesel Hunter
(Psy.D. '04) is looking for
office space to sublease
on the west side of Denver
(Golden or Lakewood),
Contact her directly if you



The University of Denver Magazine recently featured our IDP students in an article featuring details about the aid they're providing for local victims of the Fall 2013 floods.

[Read the Full Article >>](#)

**Artur Poczwardowski recipient of the
Distinguished Teaching Award for 2013**

know of something!

lieselhunter@gmail.com

Sue Hamm (Ph.D '86) has a lovely office on the corner of Hampden and Tamarac! This space has a waiting room and work room w. amenities. Contact her directly if you are interested!

303-249-1847 or
dr_suehamm@hotmail.com

Help Our Students Give Back!



GSPP has developed a new fund to help pay for IDP student expenses when volunteering at local disaster sites! Give now to the Disaster Response Team's Gift Fund to help students give back to the community!

[Click Button Above or Here to Help!](#)



GSPP's very own Artur Poczwardowski was honored at DU's Fall Convocation with the University's Distinguished Teaching Award!

[Read More about Artur's Award and Watch a Video Created for the Convocation Ceremony! >>](#)

How Can I Help?

Many of you are asking this question, and you are already helping by staying involved! Most of you know that giving back to GSPP helps our training stay strong and effective. Here are some important ways to help:

- **Become a supervisor:** If you are in the Denver area, we can now use supervisors in the PPC and our new specialty clinics for the MA programs. Please contact [Lindsay](#) for more information. We will be listing all of our supervisors in the April newsletter, so sign up by March 15 to be included in the list!

- **Help us develop Endowed Scholarships for the MAFP, MAIDP, or MASPP:** We have matching funds from the university if we can start these scholarships before July 1. Please contact [Shelly](#) if you would like to help start a fund, or know of an individual or foundation with such an interest.

Exciting GSPP News!



GSPP will be launching several exciting initiatives this year based on generous gifts and grants from several external funders.

- GSPP's Professional Psychology Clinic (PPC) will expand its ability to provide services to seriously mentally ill individuals through a sizable gift from the LARRK foundation. This gift complements the already-existing New Start Program at the PPC, and will allow for more supervision and therapists to provide high quality, low-cost services to individuals with seriously mental health needs.

- Due in large part to the efforts you have contributed to MASPP, CPEX, and the Denver community for the past 6 years, we have received some generous and well-deserved grant funding. In November, we received word that the Daniels Fund was providing \$50,000 to support our collaboration with DPS.

- The Master's in Forensic Psychology program will be launching two new community-based initiatives in partnership with the City and County

- **Donate to one of our existing funds:** We have featured our MAIDP program in this edition, and have a fund to help support students going abroad each summer. We also have a variety of Endowed Scholarships in the PsyD program that are growing each year. [Click on this HERE to give to GSPP.](#)

We appreciate all of your contributions!

We want to see you!

Shelly is regularly traveling on GSPP business and often stops to visit alumni. Please contact her if you'd like a visit next time she's in your city! [Email Shelly Here](#)



Shelly and Alum, Toby Haslam-Hopwood (Psy.D. '01) in Kilkenny, Ireland



Marina Perris (Psy.D. '89) and Shelly in London! Marina and Shelly did internship together in '88 at Northwestern Hospital.



Alumni, Melissa Baker (Psy.D. '05) & Jessica Bloomfield (Psy.D. '08) during a visit with Shelly in Charlotte, NC



Shelly with Alum, Julie Lerner-Levine (Psy.D. '96), in Charlotte, NC

of Denver. These two grant-funded projects will target the most vulnerable of Denver's forensic population by assessing and providing mental health services both inside county jails and in the community. The project will provide an innovative, cutting edge approach that identifies strengths and vulnerabilities in this population, and that creates a community-based service opportunity promoting mental health, physical fitness, and holistic wellness.

Of course, we hope that these are just the first of many contributions to come. So, a huge THANK YOU to all alumni for helping get us to this moment.



Alum, Mary Atwater (Psy.D. '03), with Shelly in Washington, D.C.



Alumni, Leah Crouch (Psy.D. '06), & Lisa Solorsh (MAFP '06 & Psy.D. '11), met with GSPP Faculty in New Orleans for the 2014 NCSPP Conference!

From left: Leah Crouch, Fernand Lubuguin, Michael Karson, Lavita Nadkarni, Janna Goodwin, Shelly Smith-Acuña, Lisa Solorsh, Terri Davis, & Jenny Cornish.

Lindsay.Anderson@du.edu

303.871.2261

2450 S. Vine Street

Denver, Colorado

80210

****Upcoming GSPP Continuing Education Events****

[Registration is now open!](#)

CONTINUING EDUCATION ^{AT THE} *Graduate School of Professional Psychology*

WORKING WITH SHAME

IN PSYCHOTHERAPY & PSYCHOLOGICAL ASSESSMENT
PRESENTED IN PARTNERSHIP WITH THE COLORADO ASSESSMENT SOCIETY



A Two-Day Training for
Mental Health Professionals
& Students
with DR. STEPHEN E. FINN

This two-day workshop will feature lectures, videos and non-disclosing experiential exercises related to shame and its implications for clinical work.

FRIDAY, APRIL 25 & SATURDAY, APRIL 26, 2014

8:15 AM - Breakfast and Registration

9:00 AM - 4:30 PM - Workshop

UNIVERSITY OF DENVER

EARLY BIRD
REGISTRATION
OPEN NOW:

www.du.edu/gsp/continuing-education

303.871.4161

This workshop is approved for 12 hours of continuing education. The University of Denver, Graduate School of Professional Psychology (GSPP), is approved by the American Psychological Association to sponsor continuing education for psychologists. GSPP maintains responsibility for this program and its content.



UNIVERSITY of
DENVER

COLORADO ASSESSMENT SOCIETY

