

# TRAVEL ASSISTANCE AND ID THEFT PROTECTION SERVICES



## Even the best planned trips can be full of surprises.

The best laid travel plans can go awry, leaving you vulnerable and, possibly, unable to communicate your needs. When the unexpected happens far from home, it's important to know whom to call for assistance.

If you are covered under a Hartford Group Policy, you and your family have access to Travel Assistance Services provided by Europ Assistance USA.<sup>1</sup>

With a local presence in 200 countries and territories around the world, and numerous 24/7 assistance centers, they are available to help you anytime, anywhere.

### Good to go: Multilingual assistance 24/7.

Whether you're traveling for business or pleasure, Travel Assistance services are available when you're more than 100 miles from home for 90 days or less.<sup>2,3</sup>

As long as you contact Europ Assistance USA at the time of need, you could be approved for up to \$1 million in covered services.<sup>4</sup>

### Services from here to there.

Travel Assistance begins even before you embark, with pre-trip information, and continues throughout your trip. See the list of services in the chart on the back of this page.

### Identity theft assistance, too.

Identity theft, America's fast growing crime, victimizes almost 10 million American consumers each year.<sup>5</sup> Europ Assistance USA helps protect you and your family from its consequences 24/7,<sup>2</sup> at home and when you travel.

In addition to prevention education, this service provides advice and help with administrative tasks resulting from identity theft.

*(continued on next page)*

Prepare today.  
Help protect tomorrow.

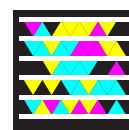


### Case illustration: Help a world away.<sup>8</sup>

As a Human Resource Professional, Tammy had always been on the coordinating end of travel services helping her company's employees; but when her daughter was hurt while traveling with her school group in Italy, she suddenly found herself in a different position.

Using the travel assistance medical referral, medical monitoring, and repatriation services from Europ Assistance USA, Tammy's daughter was able to receive immediate medical treatment and was evacuated within 48 hours. The Europ Assistance USA Case Manager helped Tammy through some of the most stressful days she's experienced as a mother and provided care for her daughter when she couldn't.

## TRAVEL ASSISTANCE



Snap the Tag with your phone to save this contact info.  
Need the app?  
<http://gettag.mobi>

# Travel Assistance and ID Theft Protection Services



TRAVEL ASSISTANCE AND ID THEFT PROTECTION SERVICES			
Emergency Medical Assistance <sup>6</sup>	Pre-trip Information	Emergency Personal Services <sup>7</sup>	Identity Theft Assistance
<ul style="list-style-type: none"> <li>• Medical referrals</li> <li>• Medical monitoring</li> <li>• Medical evacuation</li> <li>• Repatriation</li> <li>• Traveling companion assistance</li> <li>• Dependent children assistance</li> <li>• Visit by a family member or friend</li> <li>• Emergency medical payments</li> <li>• Return of mortal remains</li> </ul>	<ul style="list-style-type: none"> <li>• Visa and passport requirements</li> <li>• Inoculation and immunization requirements</li> <li>• Foreign exchange rates</li> <li>• Embassy and consular referrals</li> </ul>	<ul style="list-style-type: none"> <li>• Medication and eyeglass prescription assistance</li> <li>• Emergency travel arrangements</li> <li>• Emergency cash</li> <li>• Locating lost items</li> <li>• Bail advancement</li> </ul>	<ul style="list-style-type: none"> <li>• Prevention Services                             <ul style="list-style-type: none"> <li>- Education</li> <li>- Identity Theft Resolution Kit</li> </ul> </li> <li>• Detection Services                             <ul style="list-style-type: none"> <li>- Fraud alert to three credit bureaus</li> </ul> </li> <li>• Resolution Guidance and Assistance                             <ul style="list-style-type: none"> <li>- Credit information review</li> <li>- ID Theft Affidavit Assistance</li> <li>- Card replacement</li> </ul> </li> <li>• Personal Services                             <ul style="list-style-type: none"> <li>- Translation</li> <li>- Emergency cash advance*</li> </ul> </li> </ul>

\* Cash advance (up to \$500) available when theft occurs 100 miles or more from your primary residence. Must be secured by a valid credit card.

## Need more facts?

For a more detailed description of the services please visit our Web site at [thehartford.com/employeebenefits](http://thehartford.com/employeebenefits).

[www.thehartford.com](http://www.thehartford.com)

**DISCLAIMER: Service Exclusions and Limitations: Europ Assistance USA (EA) services are eligible for payment or reimbursement by EA only if EA was contacted at the time of the services and arranged and/or preapproved the services. Certain terms, conditions and exclusions apply; for further information refer to the Web site listed or call EA at the number provided.**

The Hartford® is The Hartford Financial Services Group, Inc. and its subsidiaries, including issuing companies Hartford Life Insurance Company and Hartford Life and Accident Insurance Company. Policies sold in New York are underwritten by Hartford Life Insurance Company. Home Office of both companies is Simsbury, CT. The Hartford's Privacy Policy is available at: [thehartford.com/legalinfo/privacy-policy/online-privacy-policy/](http://thehartford.com/legalinfo/privacy-policy/online-privacy-policy/).

<sup>1</sup> Travel assistance and ID theft protection and assistance is provided by Europ Assistance USA. Europ Assistance USA is not affiliated with The Hartford and is not a provider of insurance services.

<sup>2</sup> Coverage includes spouse (or domestic partner) and dependent children under age 26.

<sup>3</sup> Services are available in every country of the world. Depending on the current political situation in the country to which you are traveling, EA may experience difficulties providing assistance, which may result in delays or even the inability to render certain services. It is your responsibility to inquire, prior to departure, whether assistance service is available in the countries where you are traveling.

<sup>4</sup> The Combined Single Limit (CSL), or amount of money available to the insured under the Travel Assistance Program, is \$1 million. One service or a combination of the services may exceed the CSL. The insured is responsible for payment of any expenses that exceed the CSL. Note: Certain Accidental Death and Dismemberment programs may offer different CSLs. Please consult with your Human Resources Manager for more details.

<sup>5</sup> [www.europassistance-usa.com](http://www.europassistance-usa.com), viewed on 12/1/11.

<sup>6</sup> In a medical emergency, Europ Assistance USA pays for assistance as described herein, but you are personally responsible for paying your medical/hospital expenses.

<sup>7</sup> Europ Assistance USA provides the described personal services to you in an emergency, but you are personally responsible for the cost of air fare not approved as medically necessary by the attending physician; food, hotel and car expenses; and attorney fees. Emergency cash advances and bail advancement require your personal satisfactory guarantee of reimbursement provided through a valid credit card.

<sup>8</sup> This case illustration is fictitious and for illustrative purposes only.

(Please cut here and keep in your wallet.) ✂

## TRAVEL ASSISTANCE

**What to have ready:** Your employer's name, a phone number where you can be reached, nature of the problem, Travel Assistance Identification Number and your company policy number, which can be obtained through your Human Resources department.

**Have a serious medical emergency?** Please obtain emergency medical services first (contact the local "911"), and then contact Europ Assistance USA to alert them to your situation.

Call: **1-800-243-6108** Collect from other locations: **202-828-5885** Fax: **202-331-1528**

Travel Assistance Identification Number: **GLD-09012**