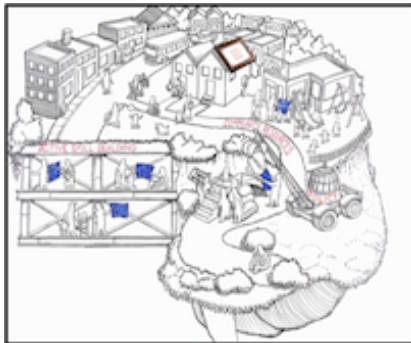




## Frontiers of Innovation

AUGUST 2015



On October 8, 2015, the Marsico Institute's annual Community Lecture will feature Dr. Phil Fisher. Dr. Fisher works collaboratively with the [Frontiers of Innovation](#) at the Harvard Center on the Developing Child to drive innovation in the service of achieving breakthrough outcomes for children facing adversity. Learn more about the Frontiers of Innovation in this [5-minute video](#) that discusses how to achieve change and describes the need to focus on building the capabilities of caregivers and strengthening the communities that together form the environment of relationships essential to children's lifelong learning, health, and behavior.

### MARSICO INSTITUTE IS...

**Douglas Clements, PhD**  
**Executive Director**  
 303-871-2217  
[douglas.clements@du.edu](mailto:douglas.clements@du.edu)

**Julie Sarama, PhD**  
**Co-Executive Director**  
 303-871-2217  
[julia.sarama@du.edu](mailto:julia.sarama@du.edu)

**Carrie Germeroth, PhD**  
**Director of Research**  
 303-871-2046  
[carrie.germeroth@du.edu](mailto:carrie.germeroth@du.edu)

**Crystal Day-Hess, PhD**  
**Research Project Director**  
 303-871-3725  
[crystal.day-hess@du.edu](mailto:crystal.day-hess@du.edu)

**Jessica Craig**  
**Office Manager/Project Coordinator**  
 303-871-2217  
[jessica.craig@du.edu](mailto:jessica.craig@du.edu)

### ADDRESS

Morgridge College of Education  
 Katherine Ruffato Hall  
 1999 E Evans Ave.  
 Suite 160  
 Denver, CO 80208

Registration for the 2015 Community Lecture with Dr. Fisher will be open starting September 1<sup>st</sup> on the [Marsico Website](#).

## Supporting Early Childhood Professionals

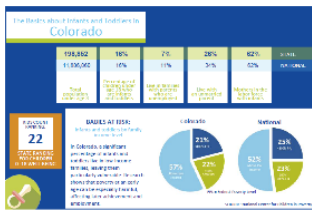


Have you seen Marsico's [Professional Development and Certification offerings](#)? Marsico staff are experienced education consultants who provide programs with research-based, tailored guidance and innovative solutions to help focus on what matters most.

Staff development: We offer extensive staff development offerings, including Learning and Teaching with Learning Trajectories and Math Play

- Training of trainers: We can build the capacity of your staff to deliver professional development programs, such as the Building Blocks Institute.
- Technical assistance/consulting: Our customized services can target specific areas for improvement in your program, from standards analysis to technology in the classroom and everything in between.

## How do Babies Fare in Colorado?



### Find out how infants and toddlers are doing in Colorado.

[The 2015 factsheets](#) for each of the 50 states and the District of Columbia provide information for early childhood professionals and policymakers about the status of infants, toddlers, and families in their state. The State Baby Facts present infant and toddler data in the framework of good health, strong families, and positive early learning experiences.

## Marsico in the News

### New York



The [Wall Street Journal](#) reports on the adoption of the research-based curriculum, Building Blocks, co-developed by Marsico Co-Executive Directors Douglas Clements and Julie Sarama. Marsico staff are providing professional development and technical assistance to the New York City Department of Education throughout the 2015-2016 school year to support implementation of Building Blocks in nearly 1000 preschool classrooms.

### Seattle



The [Seattle Times](#) reports, with Building Blocks, students don't just learn to count and add. One key part of the curriculum is geometry, which its co-creator, Marsico Executive Director, Douglas Clements, says is key for understanding mathematical relationships. Preschoolers are taught, for example, that triangles don't always resemble a witch's hat, the only version most kids their age see.

## Read



The [new publications](#) co-authored by Marsico Co-Executive Directors Douglas Clements and Julie Sarama on the development of children's mathematics skills. Inside the pages you'll find information to help students develop a robust understanding of math.

## Follow Us on Facebook and Twitter

- Co-Executive Director Julie Sarama will present on *The Surprising Importance of Early Math* at the [Pioneer Symposium](#) in Denver, CO, Sept. 25, 2015.
- Marsico Co-Executive Directors Douglas Clements and Julie Sarama will present Keynote presentations on early math at the [Four Corners Early Childhood Education Conference](#) in Farmington, NM, September 11-12, 2015 and [Illinois Council of Teachers of Mathematics](#) Oct. 23-24.

## Follow Us on Facebook and Twitter

We have already selected two Facebook fans to receive a free autographed book. We have one more book to give away once we reach 100 likes. Don't miss out on your chance to win this free resource. Like us on [Facebook](#) today!

## Questions from the field

Got a question for the Marsico staff, submit them to [marsico.institute@du.edu](mailto:marsico.institute@du.edu).

[Facebook](#) | [Twitter](#) | [Flickr](#) | [YouTube](#)

[Contacts & Directions](#) | [Maps](#) | [Jobs](#) | [Giving](#)

Copyright © 2012 University of Denver. All rights reserved. [Privacy](#). The University of Denver is an equal opportunity affirmative action institution.

University of Denver  
2199 S. University Blvd.  
Denver, CO 80208

To unsubscribe from all emails, [click here](#)  
To manage which emails you receive from us, please [login to your account](#).  
or contact us at 1-800-871-3822