

Pre-Health Education & Advising

Nancy Lorenzon, PhD
Director, Pre-Health Education & Advising
Teaching Professor, Biological Sciences



**What is
pre-health?**



**How to get
connected?**

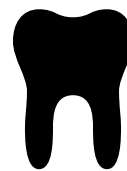


**What to know
for the 1st year?**

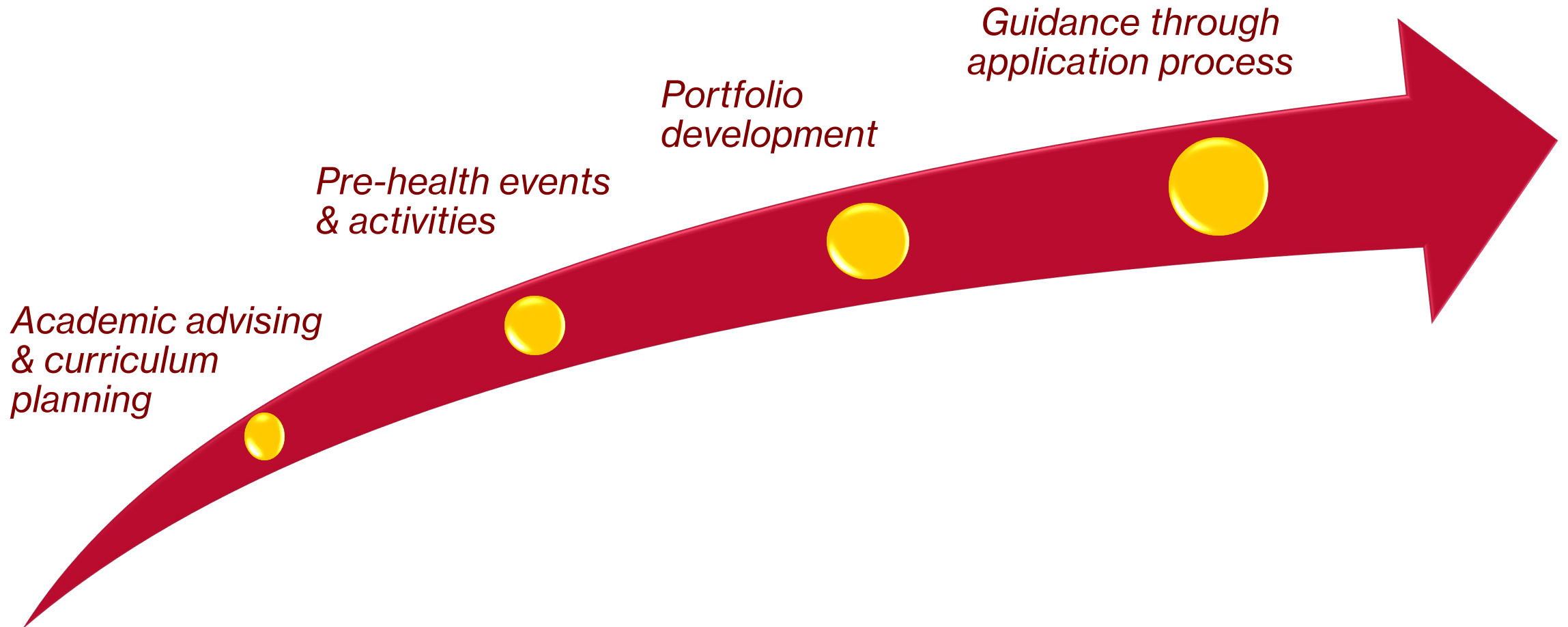


Pre-Health Advising

academic and extracurricular
advising for students from all majors
who are interested in pursuing
careers in health and health care



Supporting students in preparation for professional school and in the pursuit of becoming an excellent healthcare provider



Academic advising and curriculum planning

(in collaboration with your major advisor)

professional school prerequisites,
suggested/elective courses, coursework timing



For most pre-health students...

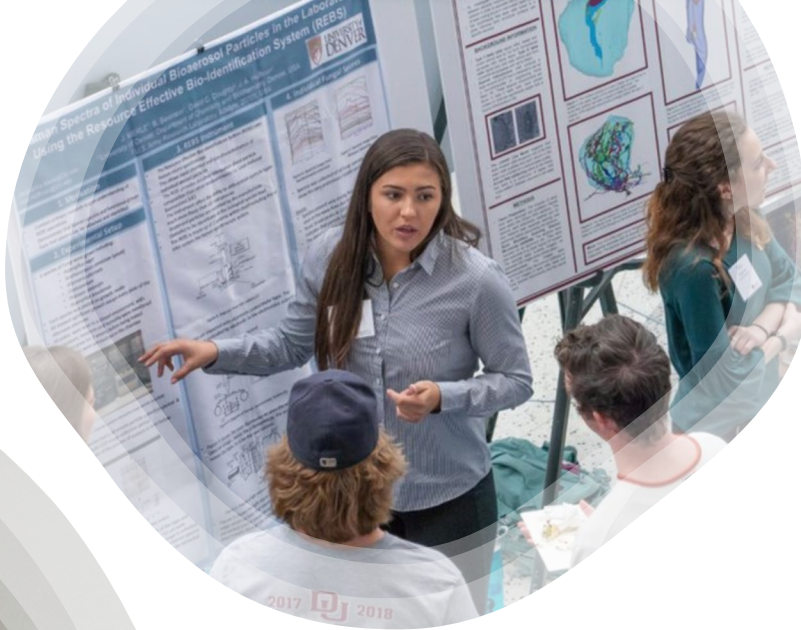
*CHEM1010 & CHEM 1240:
General Chemistry I & Lab
in the fall of 1st year*



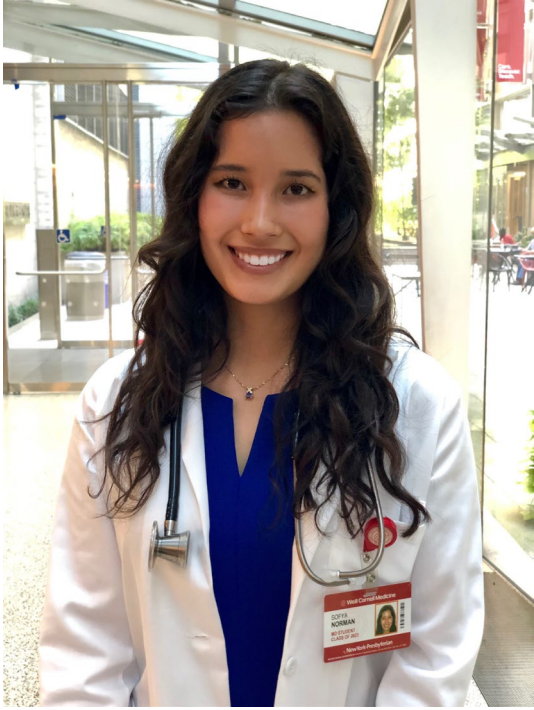
Pre-health events and activities

workshops, speakers,
networking, and
student organizations





Portfolio development
volunteer, clinical, and research
experiences on and off DU campus



Guidance through the application process

- entrance exam prep
- personal statement workshop
- recommendation letters
- choosing schools
- interview skills and practice
- and more...



General timeline...

1st year

- Make a general curriculum plan
- Develop study skills
- Focus on your transition to college and your coursework
- Get involved with health-related and other clubs
- Explore health careers:
explorehealthcareers.org
- Start/continue building your 'resume'
- Engage in self-assessment

Most important...

don't stress!



- Take advantage of the opportunities and resources available
- Sign-up for the **pre-health weekly newsletter**
- Attend the **pre-health advising session** during orientation week
- Come to the **pre-health group advising** for 1st year students (during 2nd week of classes)
- **Keep engaged!**



Find more information on the
Pre-Health Advising portfolio website

<http://portfolio.du.edu/Prehealth>

(login with your DU ID & password)

To subscribe to the **Pre-Health weekly newsletter:**

<https://science.du.edu/content/contact-pre-health-advising>

Questions?

Contact Pre-Health Education & Advising

Phone: 303-871-3661

Email: preprofessional@du.edu

THANK YOU

